

**INSTRUMENT APPROACH  
CHART (IAC)**

**JOINVILLE / Lauro Carneiro de Loyola (SBJV)**

**AD ELEV: 15'**

**VOR X RWY 33**

ATIS <b>NIL</b>	APP CURITIBA <b>119.95 119.70 120.65 120.95 129.55 133.15 121.50</b>			TWR JOINVILLE <b>118.00</b>	GND <b>NIL</b>
VOR JNV <b>115.10 MHz</b>	FINAL CRS <b>329°</b>	FAF <b>1650'</b>	<b>N/A</b>		VOR MDA / (OCH): <b>510' (500')</b>

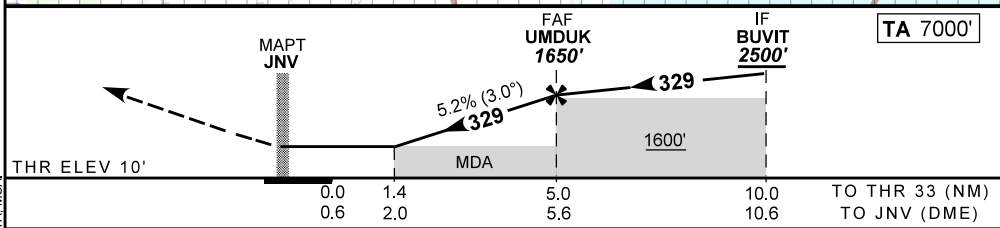
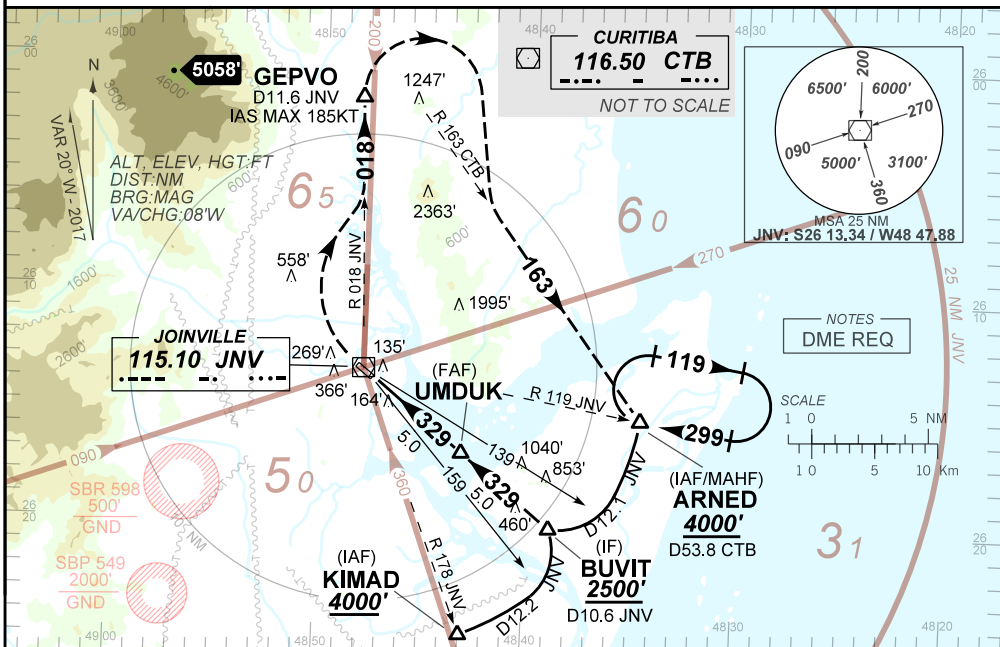
APCH Perdida: Subir para **4000'**, curvando à DIREITA, para interceptar a RDL **018** do VOR JNV até GEPVO.

Então, curvar à DIREITA, para interceptar a RDL **163** do VOR CTB até ARNED para espera.

Missed APCH: Climbing RIGHT turn to **4000'** to intercept **018** RDL JNV VOR up to GEPVO.

Then, turn RIGHT to intercept **163** RDL CTB VOR up to ARNED for holding.

RMK: 1) NIL



RWY33	1.4	2.0	3.0	4.0	UMDUK	KT	090	110	130	150	170	190
ALT	510	697	1015	1334	1650	FPM	500	600	700	800	900	NA
(HGT)	500	687	1006	1324	1640	FAF-MAPT	NA					

STRAIGHT-IN	CAT	A	B	C	D	E
	MDA / (OCH) / TETO	510' / (500') / 500'				NA
VOR	ALS/NO ALS/RVR ALS (m)	NIL / 1600 / NIL		NIL / 2300 / NIL		NA
	MDA / (OCH) / TETO	NA				
CIRCLING	MDA / (OCH) / TETO	NA				
	MS (m)	NA				

CHANGES: DECVAR, LAYOUT, PROC, TA, MSA.

**INTENCIONALMENTE EM BRANCO**  
INTENTIONALLY LEFT BLANK