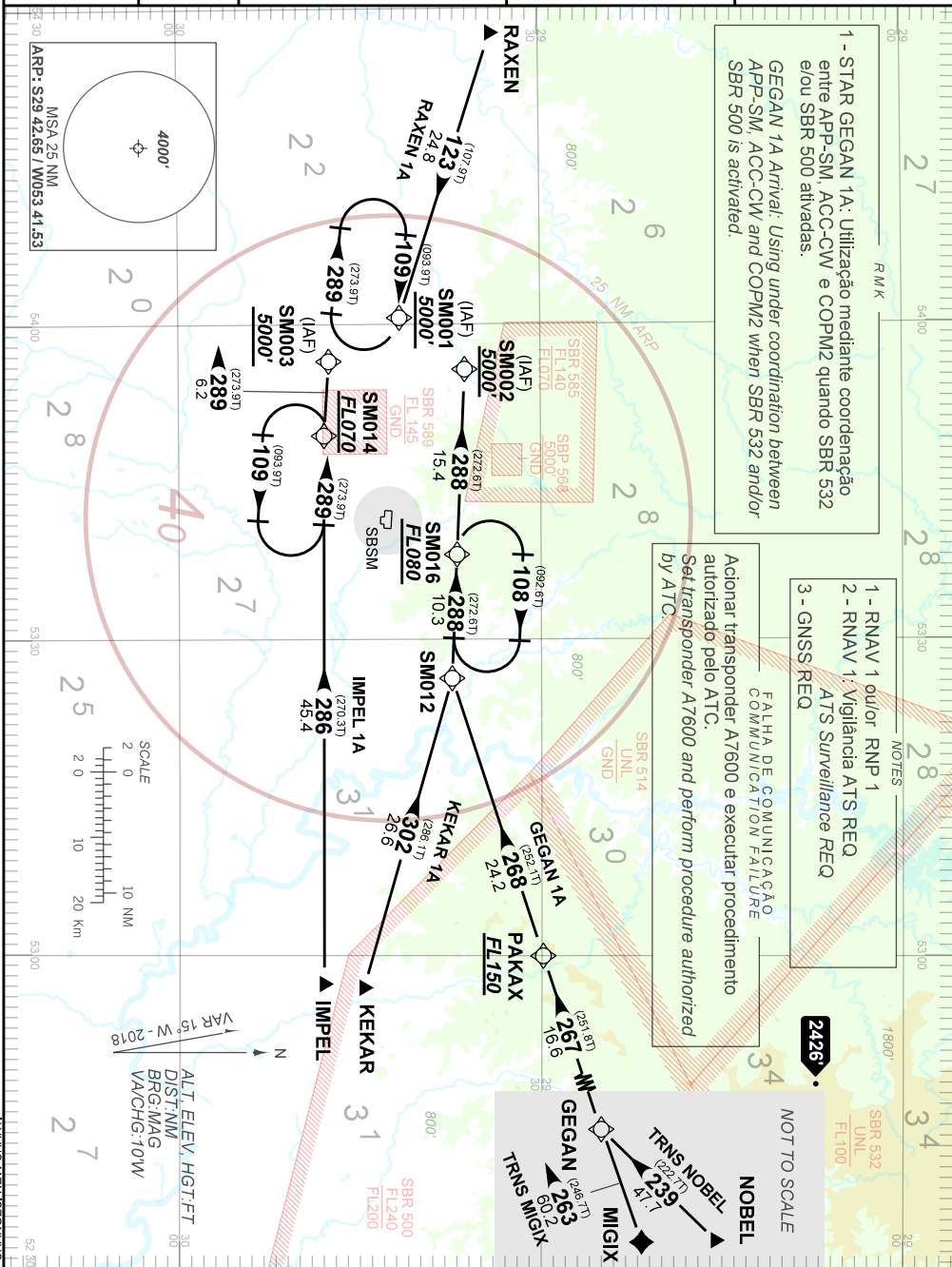


AD ELEV: 289'

**RNAV GEGAN 1A - IMPEL 1A - KEKAR 1A - RAXEN 1A**

<b>TA 5000'</b>	<b>ATIS 127.75</b>	<b>ACC CURITIBA 135.90 123.725 121.50</b>	<b>APP SANTA MARIA 119.35 121.35 121.50</b>	<b>TWR SANTA MARIA 118.30 118.85 121.50</b>
-----------------	--------------------	---	---	---



Acionar transponder A7600 e executar procedimento autorizado pelo ATC.  
Set transponder A7600 and perform procedure authorized by ATC.

1 - RNAV 1 ou/ou RNP 1  
2 - RNAV 1, Vigilância ATIS REQ  
3 - GNSS REQ

2426

NOT TO SCALE