

INSTRUMENT APPROACH  
CHART (IAC)

BAURU / Bauru (SBBU)

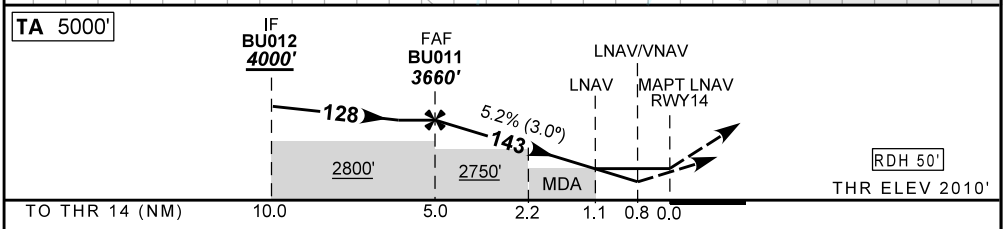
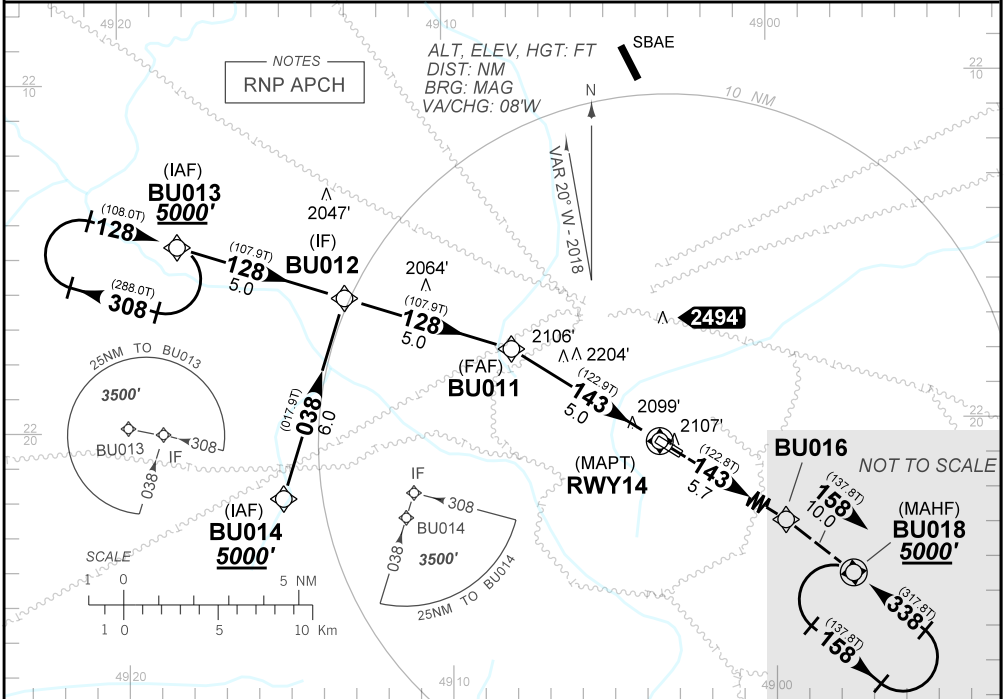
AD ELEV: 2025'

RNAV (GNSS) Z RWY 14

ATIS <b>127.875</b>	APP BAURU <b>121.30</b>		AFIS BAURU <b>121.30</b>	GNDC <b>NIL</b>
N/A	FINAL CRS <b>143°</b>	FAF <b>3660'</b>	LNAV/VNAV DA / (OCH): <b>2320' / (310')</b>	LNAV MDA / (OCH): <b>2410' (400')</b>

APCH Perdida: Subir para **5000'**, rumo **128** até BU016. Após, curva à DIREITA, rumo **158** até BU018 para espera.  
Missed APCH: Climb to **5000'**, course **128** to BU016. Then, turn RIGHT, course **158** to BU018 for holding.

RMK: 1) Para sistemas não compensados Baro-VNAV, LNAV/VNAV não autorizado abaixo de 5°C.  
1) For uncompensated systems Baro-VNAV, LNAV/VNAV not authorized below 5°C.



BU011	4.0	3.0	2.0	1.1	RWY14	KT	090	110	130	150	170	190
3660	3334	3016	2697	2410	ALT	FPM	500	600	700	800	950	1050
1650	1324	1006	687	400	(HGT)	FAF-MAPT	NA					

STRAIGHT-IN	CAT	A	B	C	D	E
LNAV/VNAV	DA / (OCH)	2320' / (310')				NA
	ALS/NO ALS/ RVR ALS (m)	NIL / 1600 / NIL				
LNAV	MDA / (OCH)	2410' / (400')				
	ALS/NO ALS/RVR ALS (m)	NIL / 1600 / NIL		NIL / 1800 / NIL		
CIRCLING	MDA / (OCH)	NA				
	VIS (m)					

CHANGES: NEW CHART