

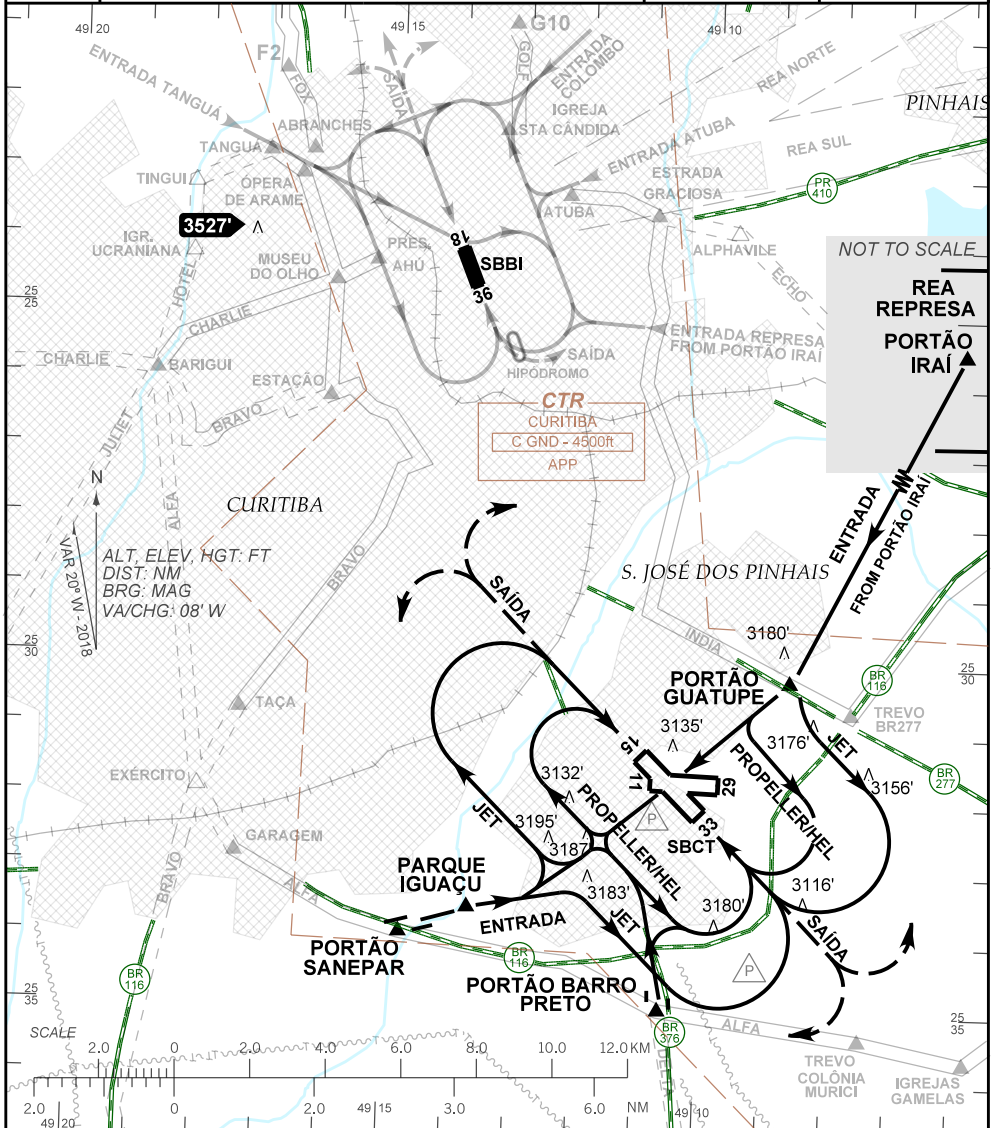
VISUAL APPROACH CHART
(VAC)

CURITIBA / Afonso Pena, INTL (SBCT)

AD ELEV: 2989'

RWY 15/33

| | | | | | | | | |
|------------------|--------------|--------|--------|--------|--------|-------------------------------|--------|--------------------------|
| D-ATIS 127.80 | APP CURITIBA | | | | | TWR CURITIBA 118.15 121.50 | | GND C CURITIBA 121.90 |
| | 119.70 | 119.95 | 120.65 | 120.95 | 129.55 | 133.15 | 121.50 | |



RMK:

1 - ALTITUDES MÍNIMAS NO CIRCUITO DE TRÁFEGO / MINIMUM ALTITUDES IN TRAFFIC CIRCUIT:

- JATO / JET: 4500'
- HÉLICE / PROPELLER: 4000'
- HEL: 3600'

2 - INFORMAÇÕES COMPLEMENTARES NO VERSO.

SEE REVERSE SIDE FOR ADDITIONAL INFORMATION.

CHANGES: NEW CHART.

AD ELEV: 2989'

RWY 15/33

RMK

- 3 - CKT RWY 11/29 PADRÃO E SUJEITO AUTH ATC.
STANDARD TRAFFIC PATTERN TO RWY 11/29 AND SUBJECT ATC CLEARANCE.
- 4 - PARA POUSO EM SBBI, VER VAC DESSE AERÓDROMO.
FOR LANDING AT SBBI, SEE VAC OF THIS AERODROME.

CHANGES: NEW CHART.