

INSTRUMENT APPROACH CHART (IAC)

SÃO PAULO / Guarulhos - Gov. André Franco Montoro, INTL (SBGR)

RNAV(GNSS) Z RWY 09L

AD ELEV: 2461'

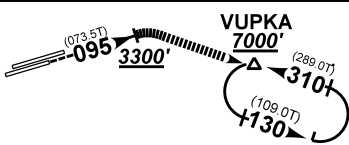
| | | | |
|-------------------------|-------------------------------------------------------------------|-----------------------------------------------------|----------------------------------------------|
| D-ATIS 127.75 | APP SÃO PAULO 129.75 119.15 120.45 120.85 133.85 121.50 | TWR GUARULHOS 118.40 132.75 135.20 121.50 | GNDC GUARULHOS 121.70 126.90 |
| N/A | FINAL CRS 095° | FAF: 4090' | LNAV/VNAV DA / (OCH): 2830' (390') |
| | | | LNAV MDA / (OCH): 3020' (580') |

APCH Perdida: Subir para **6500'**, gradiente MNM 5%. Manter rumo **095** até cruzar **5000'**. Após, curvar à ESQUERDA direto UTBUR para espera.

Missed APCH: Climb to **6500'**, MNM gradient 5%. Maintain course **095** until passing **5000'**. Then, turn LEFT direct UTBUR for holding.

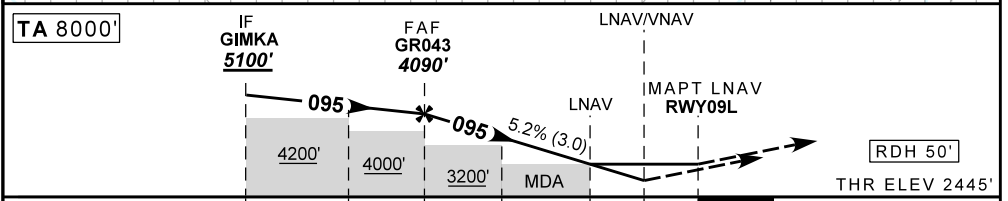
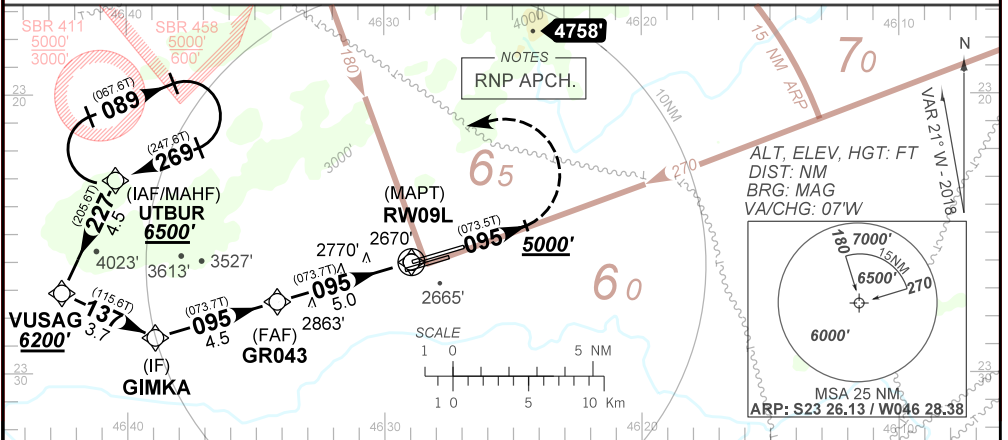
RMK: 1) Para sistemas BARO-VNAV não compensados, procedimento LNAV/VNAV não autorizado abaixo de -10°C.

1) For uncompensated systems BARO-VNAV, LNAV/VNAV procedure not authorized below -10°C.



APROXIMAÇÃO PERDIDA VISUAL RWY 09R: Subir para **7000'**, proa **095**. Após cruzar **3300'**, curvar à DIREITA proa **130**. Após DCT VUPKA.

VISUAL MISSED APPROACH RWY 09R: Climb to **7000'**, heading **095**. After passing **3300'**, turn RIGHT heading **130**. After DCT VUPKA.



| | | | | | | | | | | | | | |
|-------|------|------|------|------|------|-------|----------|-----|-----|-----|-----|-----|------|
| GR043 | 4.0 | 3.0 | 2.0 | 1.7 | 1.0 | RW09L | KT | 90 | 110 | 130 | 150 | 170 | 190 |
| 4090 | 3769 | 3451 | 3132 | 3025 | 2814 | ALT | FPM | 500 | 600 | 700 | 800 | 900 | 1000 |
| 1650 | 1324 | 1006 | 687 | 580 | 369 | (HGT) | FAF-MAPT | NA | | | | | |

| | | | | | | |
|-------------|-------------------------|------------------|---|-------------------|---|---|
| STRAIGHT-IN | CAT | A | B | C | D | E |
| LNAV/VNAV | DA / (OCH) | 2830' / (390') | | | | |
| | ALS/NO ALS/ RVR ALS (m) | 800 / 1600 / NIL | | 1100 / 1800 / NIL | | |
| LNAV | MDA / (OCH) | 3020' / (580') | | | | |
| | ALS/NO ALS/ RVR ALS (m) | 800 / 1600 / NIL | | 1900 / 2600 / NIL | | |
| CIRCLING | MDA / (OCH) | NA | | | | |
| | VIS (m) | NA | | | | |

CHANGES: PROC.