

AD ELEV: 2461'

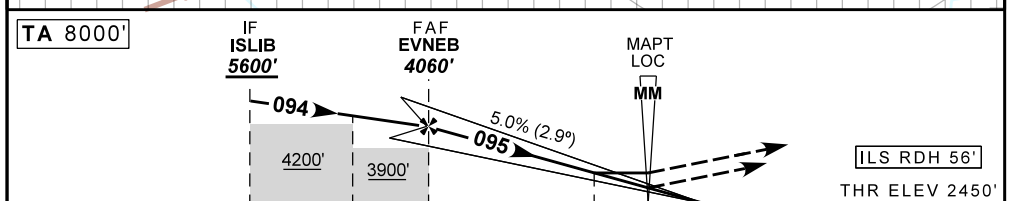
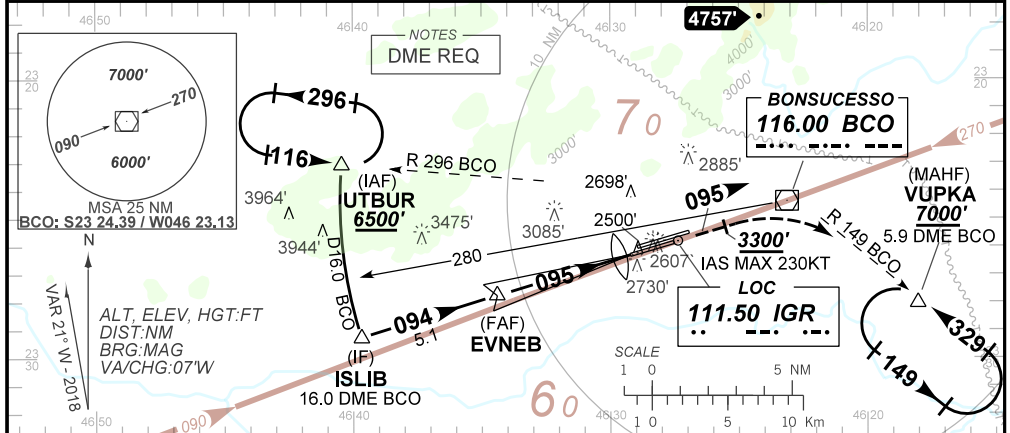
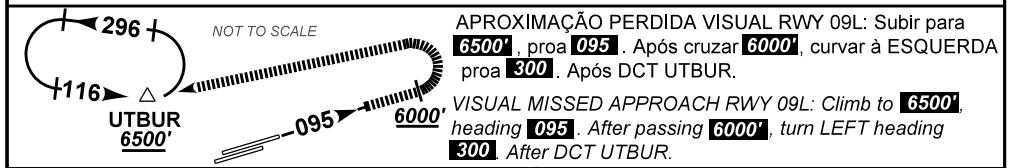
ILS Y ou/ or LOC Y RWY 09R

D-ATIS 127.75	APP SÃO PAULO 129.75 119.15 120.45 120.85 133.85 121.50	TWR GUARULHOS 118.40 132.75 135.20 121.50	GND GUARULHOS 121.70 126.90
------------------	--	--	--------------------------------

LOC IGR 111.50 MHz	FINAL CRS 095°	FAF: 4060'	CAT I DA / (OCH): 2650' (200')	LOC ONLY MDA / (OCH): 2980' (530')
-----------------------	-------------------	---------------	-----------------------------------	---------------------------------------

APCH Perdida: 1) Subir para **7000'**, gradiente MNM 5%. Manter rumo **095** até cruzar **3300'**. Após, curvar à DIREITA, RDL **149** BCO para espera em VUPKA. 2) IAS MAX 230KT.
Missed APCH: 1) Climb to **7000'**, MNM gradient 5%. Mantain course **095** until passing **3300'**. Then, turn RIGHT, **149** BCO RDL for holding at VUPKA. 2) IAS MAX 230KT.

RMK: 1) (*) VIS RVR ALS 550m para aproximação utilizando Diretor de Voo, Piloto Automático ou Head-Up Display (HUD).
1) (*) VIS RVR ALS 550m for approach using a Flight Director, Autopilot or Head-Up Display (HUD).



TO THR 09R (NM)	10.1	7.0	5.0	1.5	0.5	0.0
TO BCO (DME)	16.0	12.9	10.9	7.4	6.4	5.9

	EVNEB	4.0	3.0	2.0	1.5	RWY09R	KT	90	110	130	150	170	190
	4060	3760	3444	3129	2980	ALT	FPM	500	600	700	800	900	1000
	1610	1310	994	679	530	(HGT)	FAF-MAPT	NA					

STRAIGHT-IN	CAT	A	B	C	D	E
CAT I	DA / (OCH)	2650' / (200')				
	ALS/NO ALS/ RVR ALS(m)	800 / 1200 / 700 (*)				
LOC	MDA / (OCH)	2980' / (530')				
	ALS/NO ALS/ RVR ALS(m)	800 / 1600 / NIL		1700 / 2400 / NIL		
CIRCLING	MDA / (OCH)	NA				
	VIS (m)					

CHANGES: IDENT. PROC.