

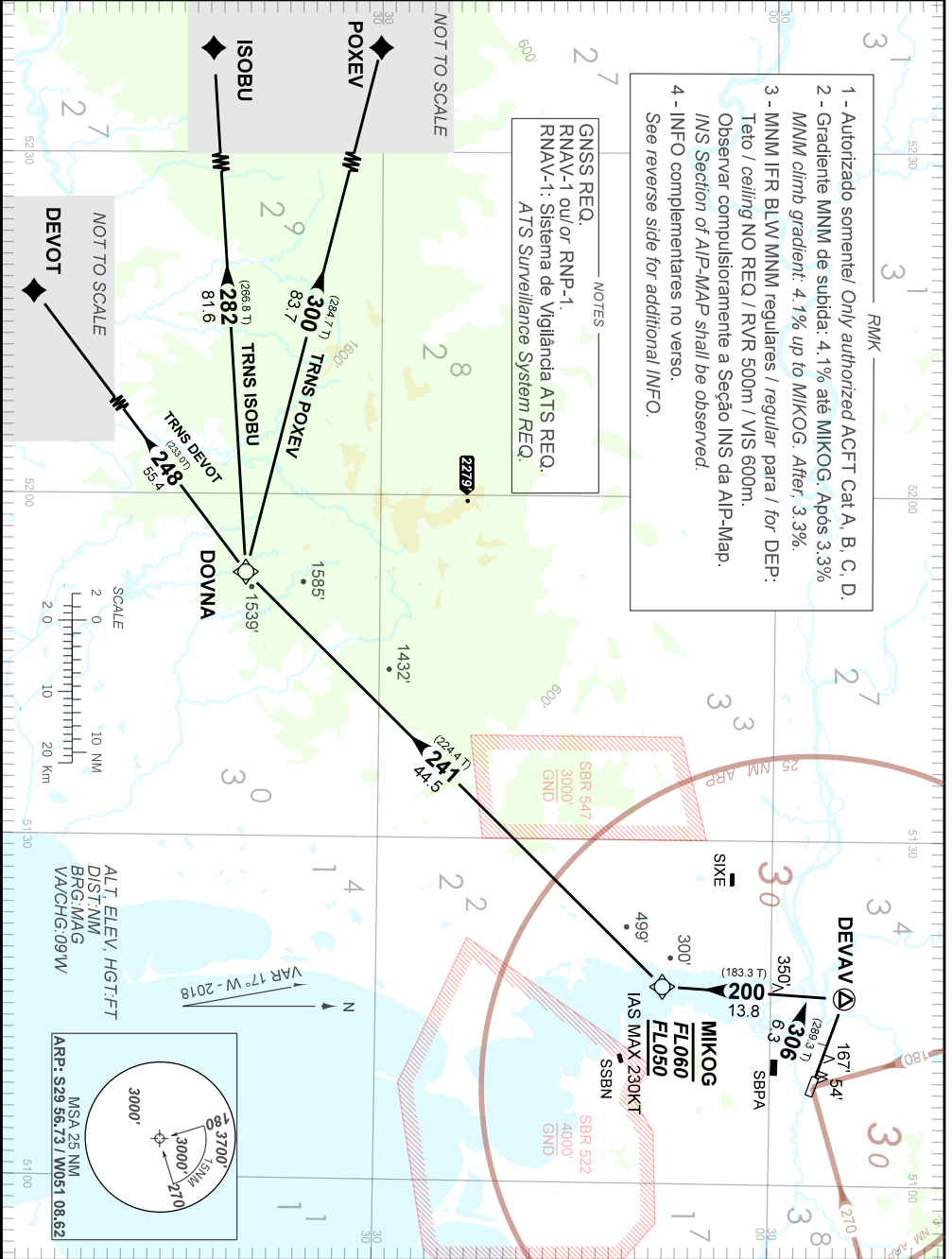
STANDARD DEPARTURE CHART
INSTRUMENT (SID)

PORTO ALEGRE / Canoas, MIL (SBCO)
RWY 30

RNAV MIKOG 1A

AD ELEV: 26'

TA 4000'	TWR CANOAS 118.50 122.80 (MIL) 121.50	APP PORTO ALEGRE 119.00 120.10 120.55 128.90 121.50	ACC CURITIBA 135.90 123.725 126.75 127.40 121.50
----------	--	--	--



CHANGES: FIX

RMK

- 5 - Obstáculos próximos não considerados para o cálculo do gradiente de subida:
Close-in obstacles not taken into account on climb gradient calculation
Árvores / Trees : a partir de / from THR12, AZM344, DIST 150m, ELEV 54'.
- 6 - Gradiente de subida superior 3.3% devido à restrição de espaço aéreo.
Climb gradient greater than 3.3% due to air space restrictions only.