

**INSTRUMENT APPROACH CHART (IAC)**

**SÃO PAULO / Guarulhos - Gov. André Franco Montoro, INTL (SBGR)**

**RNAV(GNSS) V RWY 09R**

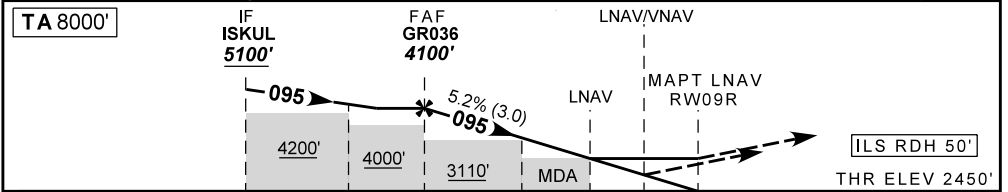
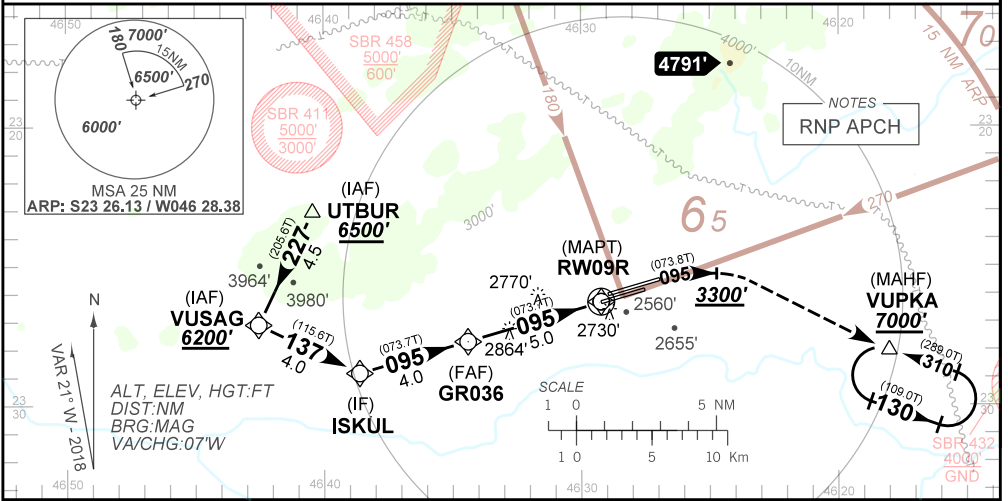
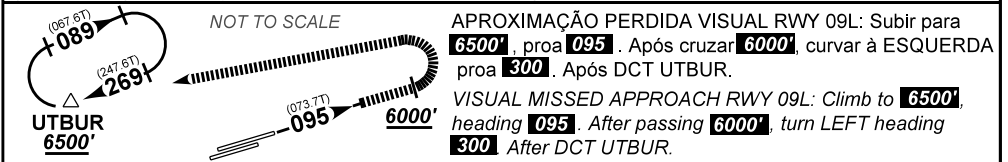
**AD ELEV: 2461'**

D-ATIS <b>127.75</b>	APP SÃO PAULO <b>119.15 120.45 120.85 133.85 121.50</b>	TWR GUARULHOS <b>118.40 132.75 135.20 121.50</b>	GNDC GUARULHOS <b>121.70 126.90</b>
-------------------------	--	---	--

<b>N/A</b>	FINAL CRS <b>095°</b>	FAF <b>4100'</b>	LNAV/VNAV DA / (OCH): <b>2845' (400')</b>	LNAV MDA / (OCH): <b>2980' (530')</b>
------------	--------------------------	---------------------	--	--

APCH Perdida: Subir para **7000'**, gradiente MNM 5%. Manter rumo **095** até cruzar **3300'**. Após, curvar à DIREITA direto VUPKA para espera.  
 Missed APCH: Climb to **7000'** MNM gradient 5%. Mantain course **095** until passing **3300'**. Then, turn RIGHT direct VUPKA for holding.

RMK: 1) Para sistemas BARO-VNAV não compensados, procedimento LNAV/VNAV não autorizado abaixo de -10°C.  
 1) For uncompensated systems BARO-VNAV, LNAV/VNAV procedure not authorized below -10°C.



TO THR 09R (NM)	9.0	7.0	5.0	2.3	1.5	1.1	0.0												
GR036	4.0	3.0	2.0	1.5	1.1	RWY15													
4100	3774	3456	3137	2980	2845	ALT													
1650	1324	1006	687	530	395	(HGT)													

STRAIGHT-IN	CAT	A	B	C	D	E
	DA / (OCH)	2845' / (400')				
LNAV/VNAV	ALS/NO ALS/ RVR ALS (m)	800 / 1600 / NIL			1100 / 1800 / NIL	
	MDA / (OCH)	2980' / (530')				
LNAV	ALS/NO ALS/ RVR ALS (m)	800 / 1600 / NIL			1700 / 2400 / NIL	
	MDA / (OCH)	NA				
CIRCLING	MDA / (OCH)	NA				
	VIS (m)	NA				

CHANGES: PROC.