

**INSTRUMENT APPROACH
CHART (IAC)**

TORRES / Torres (SBTR)

AD ELEV: 33'

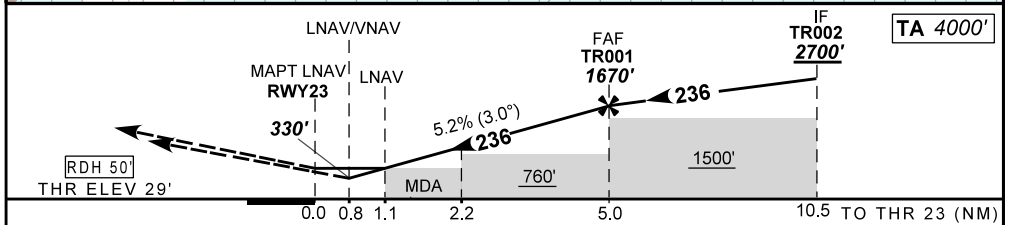
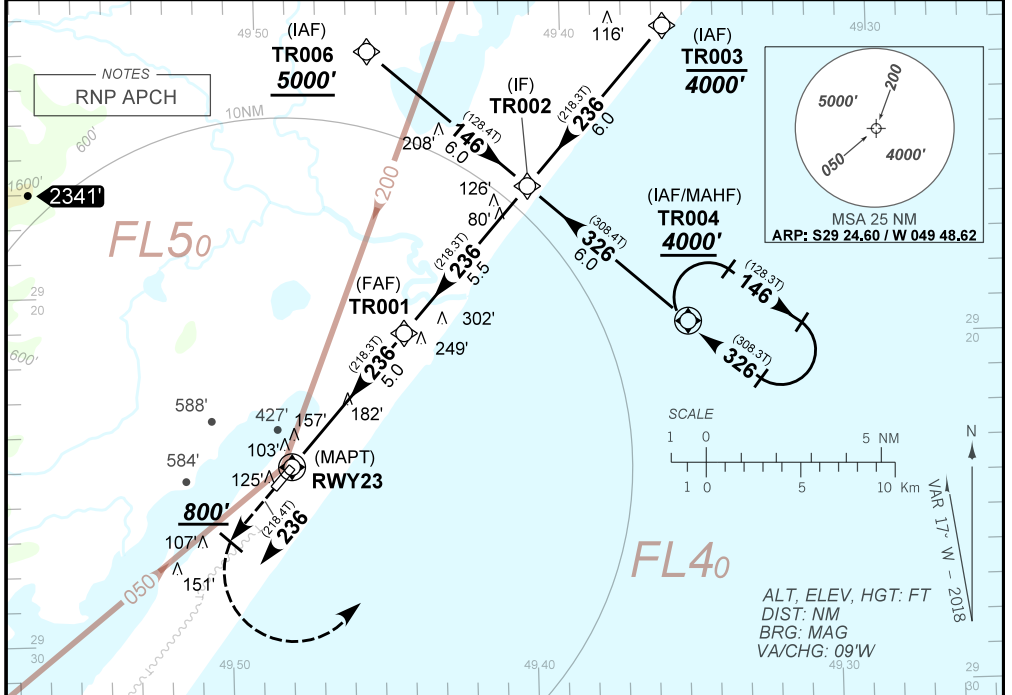
RNAV (GNSS) RWY 23

ATIS NIL	APP NIL	AFIS TORRES 130.25	GNDC NIL
N/A	FINAL CRS 236°	FAF 1670'	LNAV/VNAV DA / (OCH): 330' (300')
		LNAV MDA / (OCH): 430' (400')	

APCH Perdida: Subir para **4000'**. Manter proa **236** até cruzar **800'**. Curvar à ESQUERDA direto TR004 para espera.
Missed APCH: Climb to **4000'**. Maintain course **236** until passing **800'**. Turn LEFT direct CA004 for holding.

RMK: 1) Para sistemas BARO-VNAV não compensados, procedimentos LNAV/VNAV não autorizado abaixo de -10°C.

1) For uncompensated systems BARO-VNAV, LNAV/VNAV procedure not authorized below -10°C.



RWY23	1.1	2.0	3.0	4.0	TR001	KT	090	110	130	150	170	190
ALT	430	716	1035	1353	1670	FPM	500	600	700	800	NA	NA
(HGT)	401	687	1006	1324	1641	FAF-MAPT	NA					

STRAIGHT-IN	CAT	A	B	C	D	E
	DA / OCH	330' / (300')			NA	
LNAV/VNAV	ALS/NO ALS/RVR ALS (m)	NIL / 1400 / NIL			NA	
	MDA / OCH	430' / (400')			NA	
LNAV	ALS/NO ALS/RVR ALS (m)	NIL / 1600 / NIL		NIL / 1800 / NIL		
	MDA / OCH	NA				
CIRCLING	MDA / OCH	NA				
	VIS (m)	NA				

CHANGES: NEW CHART.