

INSTRUMENT APPROACH

MANAUS / Ponta Pelada, MIL (SBMN)

CHART (IAC)

ILS Z or LOC Z RWY 09

AD ELEV: 259'

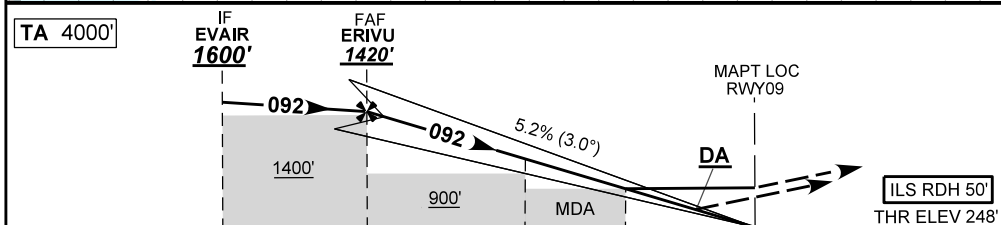
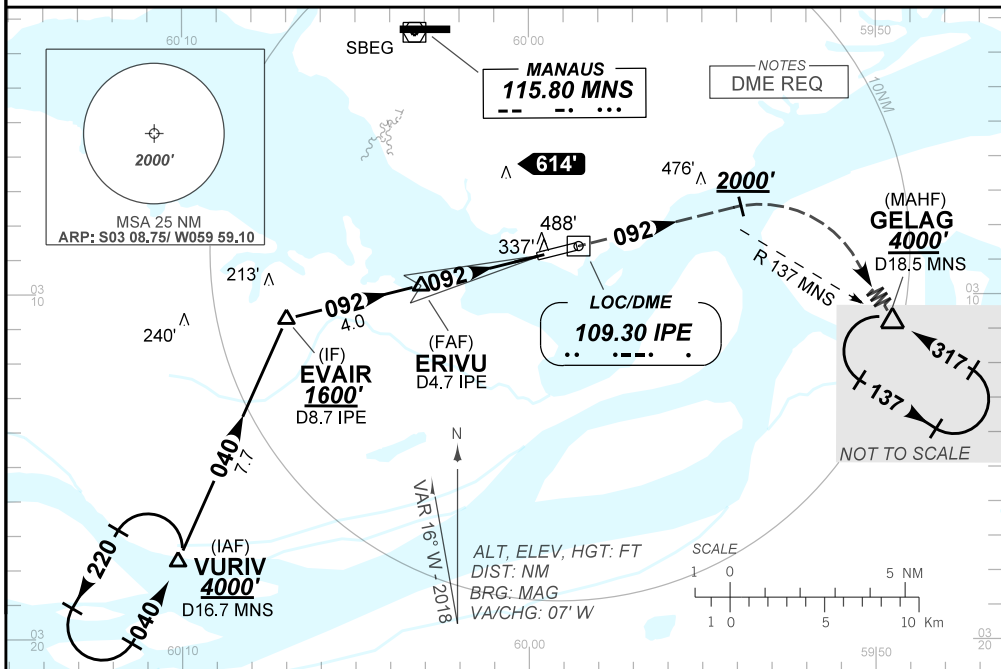
ATIS NIL	APP MANAUS 119.25 119.70 120.40 121.50	TWR MANAUS 118.10	GNDC MANAUS NIL
-------------	---	----------------------	--------------------

LOC IPE 109.30 MHz	FINAL CRS 092°	FAF 1420'	CAT I DA / (OCH): REFER TO MNM	LOC only MDA / (OCH): 720' (480')
-----------------------	-------------------	--------------	-----------------------------------	--------------------------------------

APCH Perdida: 1) Subir para **4000'** com gradiente MNM 4%. Manter rumo **092** até cruzar **2000'**. Então, curvar à DIREITA direto GELAG para espera. 2) IAS MAX 250KT.

Missed APCH: Climb to **4000'** with gradient MNM 4%. Maintain course **092** until passing **2000'**. Then, turn RIGHT direct to GELAG for holding. 2) IAS MAX 250KT.

RMK: NIL



TO THR 09 (NM)	7.5	3.5	2.1	1.3	0.0					
TO IPE (DME)	8.7	4.7	3.3	2.5	1.2					
	ERIVU 3.0 1420	2.0 1253	1.3 935	RWY09 ALT (HGT) 720 472	KT 090 500	110 600	130 700	150 800	170 900	190 NA

CAT I	DA / (OCH)	448' / (200')			517' / (269')	
	ALS/NO ALS/RVR ALS (m)	NIL / 1200' / NIL			NIL / 1300' / NIL	
LOC	MDA / (OCH)	720' / (480')			NIL / 2200' / NIL	
	ALS/NO ALS/RVR ALS (m)	NIL / 1600' / NIL			NIL / 2200' / NIL	

CHANGES: NEW CHART.