

STANDARD DEPARTURE CHART
INSTRUMENT (SID)

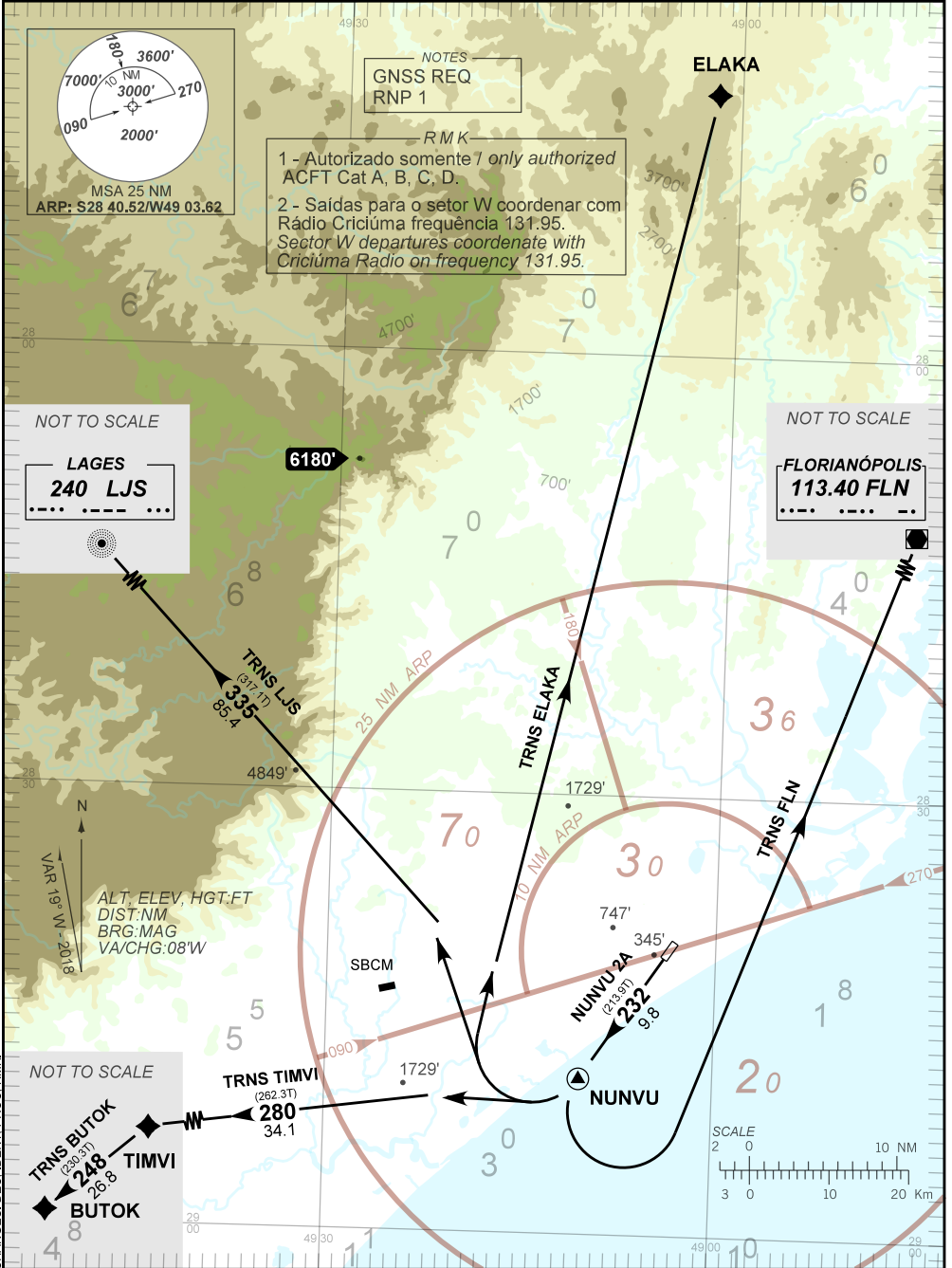
JAGUARUNA / Regional Sul (SBJA)

RWY 23

AD ELEV: 115'

RNAV NUNVU 2A

TA 7000'	AFIS JAGUARUNA 130.70	APP NIL	ACC CURITIBA 126.10 135.85 127.50 121.50
----------	--------------------------	------------	---



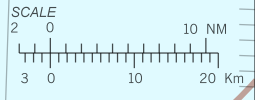
NOTES
GNSS REQ
RNP 1

— R M K —
1 - Autorizado somente 1 only authorized ACFT Cat A, B, C, D.
2 - Saídas para o setor W coordenar com Rádio Criciúma frequência 131.95. Sector W departures coordinate with Criciúma Radio on frequency 131.95.

NOT TO SCALE
LAGES
240 LJS

NOT TO SCALE
FLORIANÓPOLIS
113.40 FLN

NOT TO SCALE
BUTOK
248
TIMVI
280



CHANGES: DEC. IDENT. PROC. RMK.