

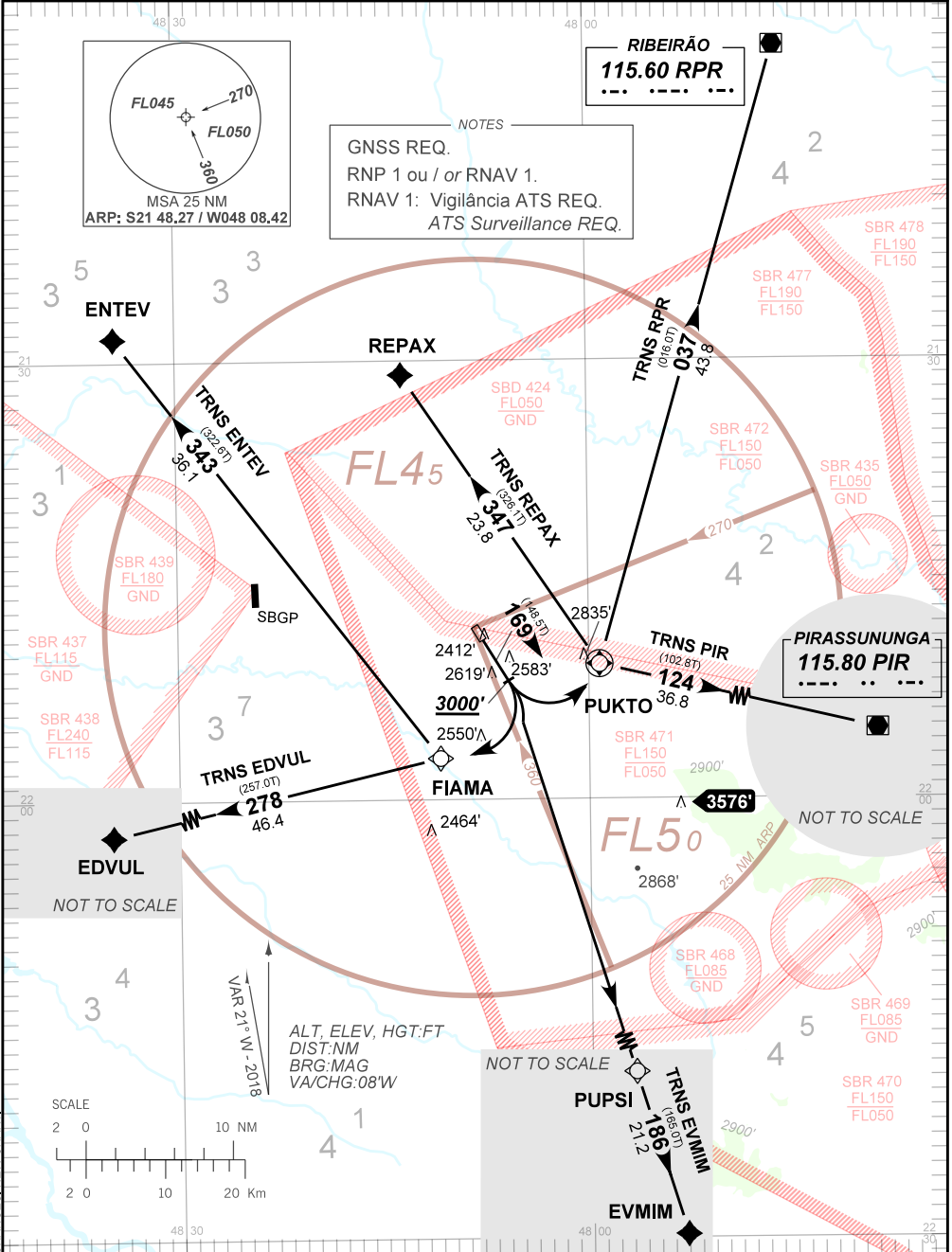
STANDARD DEPARTURE CHART
INSTRUMENT (SID)

ARARAQUARA / Bartolomeu de Gusmão (SBAQ)
RWY 17

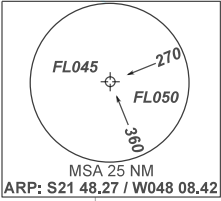
AD ELEV: 2334'

RNAV FIAMA 1A - PUKTO 1A - PUPSI 1A

TA 4000'	AFIS ARARAQUARA 131.60	APP ACADEMIA 120.10 122.40 121.50	ACC BRASÍLIA 126.80 128.50 128.30 133.75 124.20 126.45 121.50	ACC CURITIBA 135.10 125.075 121.50
----------	---------------------------	---	---	---------------------------------------



NOTES
GNSS REQ.
RNP 1 ou / or RNAV 1.
RNAV 1: Vigilância ATS REQ.
ATS Surveillance REQ.



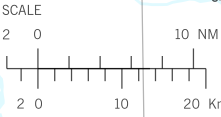
RIBEIRÃO
115.60 RPR
... ..

PIRASSUNUNGA
115.80 PIR
... ..

NOT TO SCALE

NOT TO SCALE

ALT. ELEV. HGT: FT
DIST: NM
BRG: MAG
VA/CHG: 08'W



CHANGES: NEW CHART.