

INSTRUMENT APPROACH CHART (IAC)

SANTO ÂNGELO / Santo Ângelo (SBNM)

AD ELEV: 1056'

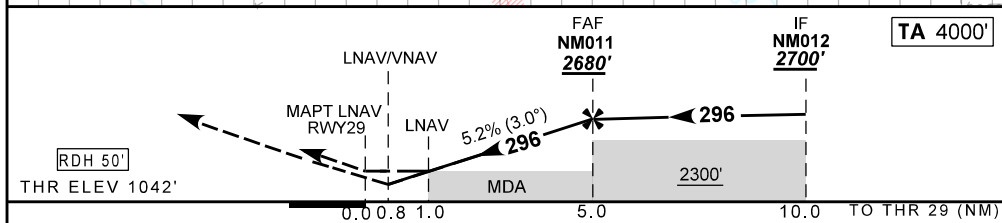
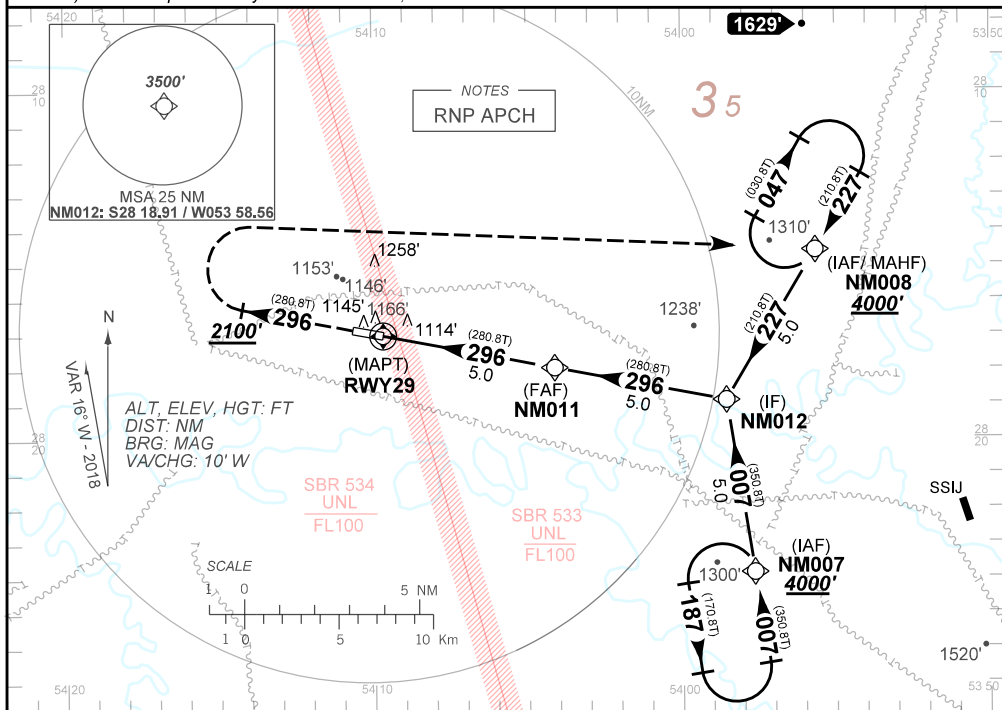
RNAV(GNSS) RWY 29

ATIS NIL	APP NIL	AFIS SANTO ÂNGELO 131.65		GNDC NIL
N/A	FINAL CRS 296°	FAF 2680'	LNAV/VNAV DA / (OCH): 1343' / (310')	LNAV MDA / (OCH): 1400' / (360')

APCH Perdida: Subir para **4000'** no rumo 296. Ao passar **2100'**, curvar à DIREITA direto NM008 para espera.

Missed APCH: Climb to **4000'** on course 296. On passing **2100'**, turn RIGHT direct to NM008 for holding.

RMK: 1) Para sistemas não compensados Baro-VNAV, LNAV/VNAV NÃO AUTORIZADO abaixo de -10 °C.
1) For uncompensated systems Baro-VNAV, LNAV/VNAV NOT AUTHORIZED below -10 °C.



RWY29	1.0	2.0	3.0	4.0	NM011		KT	090	110	130	150	170	190
ALT	1400	1729	2048	2365	2680		FPM	500	600	700	800	NA	NA
(HGT)	358	687	1006	1323	1638		FAF-MAPT	NA					

STRAIGHT-IN	CAT	A	B	C	D	E
LNAV/VNAV	DA / (OCH)	1343' / (310')			NA	NA
	ALS/NO ALS/RVR ALS (m)	NIL / 1400 / NIL				
LNAV	MDA / (OCH)	1400' / (360')				
	ALS/NO ALS/RVR ALS (m)	NIL / 1600 / NIL				
CIRCLING	MDA / (OCH)	NA				
	VIS (m)					

CHANGES: PROC.