

INSTRUMENT APPROACH
CHART (IAC)

TORRES / Torres (SBTR)

AD ELEV: 33'

RNAV (GNSS) RWY 05

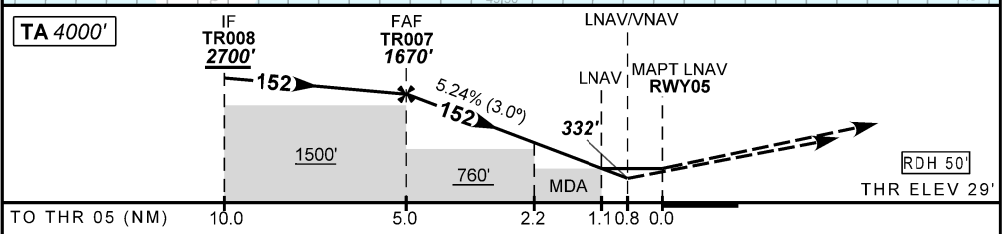
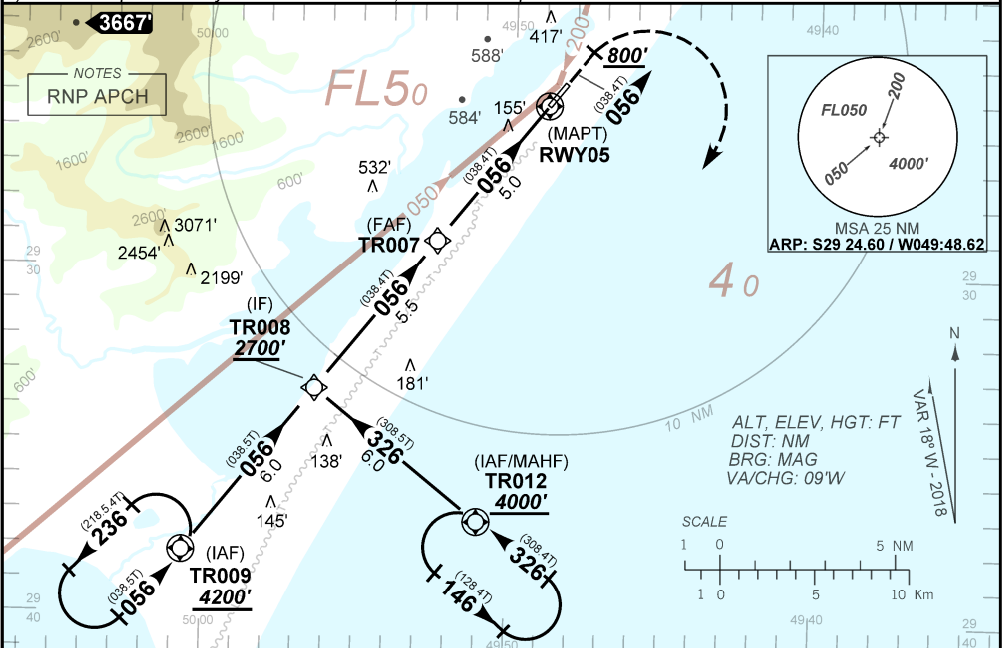
ATIS NIL	APP NIL	AFIS TORRES 130.25	GNDC NIL
N/A	FINAL CRS 056°	FAF 1670'	LNAV / VNAV DA / (OCH): 332' (310')
		LNAV MDA / (OCH): 430' (400')	

APCH Perdida: Subir para **4000'**. Manter proa **056** até cruzar **800'**. Curvar à DIREITA direto TR012 para espera.

Missed APCH: Climb to **4000'**. Maintain course **056** until passing **800'**. Turn RIGHT direct TR012 for holding.

RMK: 1) Para sistemas BARO-VNAV não compensados, procedimentos LNAV/VNAV não autorizado abaixo de -10°C.

1) For uncompensated systems BARO-VNAV, LNAV/VNAV procedure not authorized below -10°C.



TR007	4.0	3.0	2.2	1.1	RWY05	KT	090	110	130	150	170	190
1670	1353	1035	769	430	ALT	FPM	500	600	700	800	NA	NA
1641	1324	1006	740	401	(HGT)	FAF-MAPT	NA					

STRAIGHT-IN	CAT	A	B	C	D	E
LNAV VNAV	DA / (OCH)	332' / (310')				NA
	ALS/NO ALS/RVR ALS (m)	NIL / 1400 / NIL				
LNAV	MDA / (OCH)	430' / (400')				
	ALS/NO ALS/RVR ALS (m)	NIL / 1600 / NIL		NIL / 1800 / NIL		
CIRCLING	MDA / (OCH)	NA				
	VIS (m)					

CHANGES: NEW CHART