

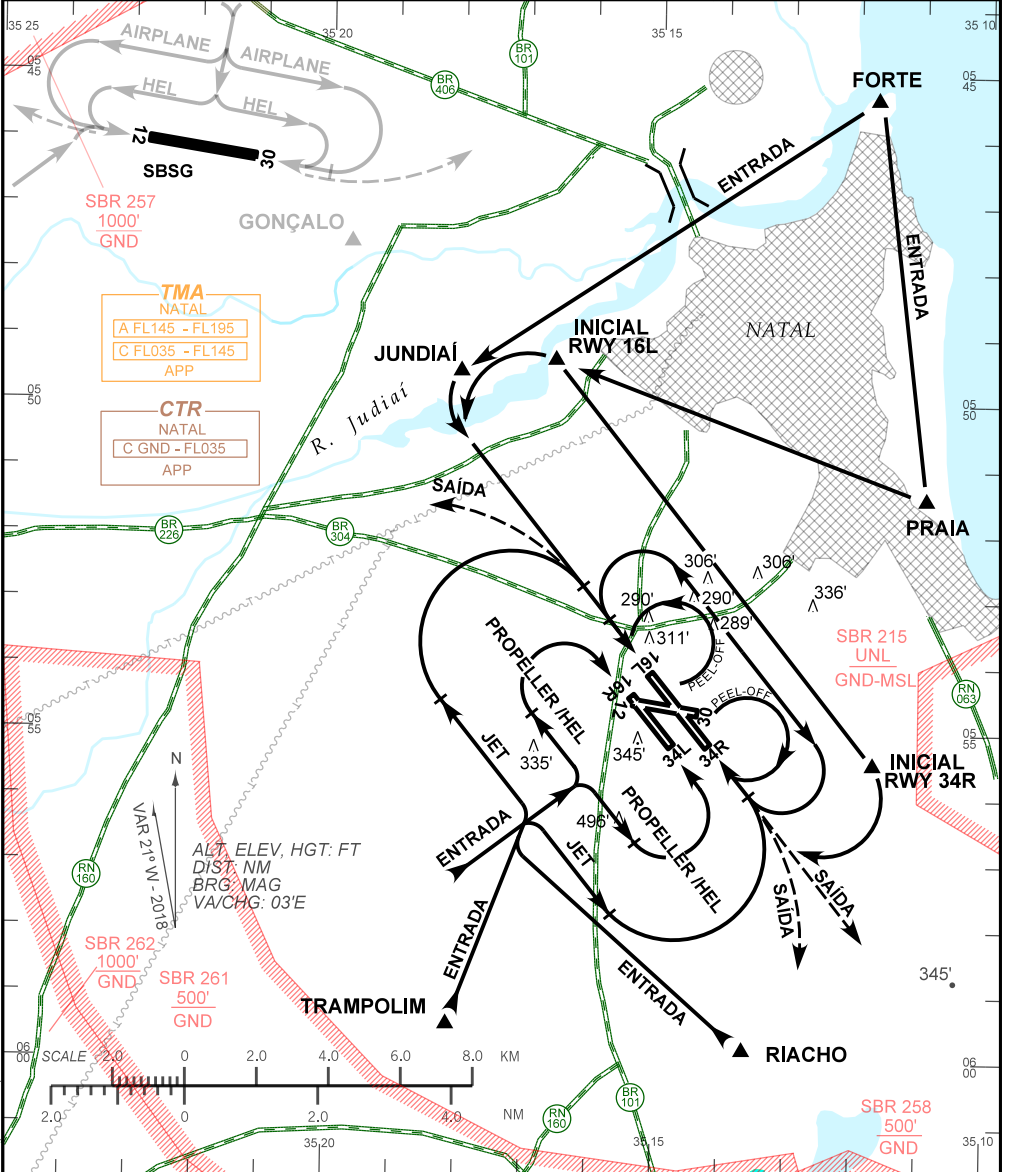
VISUAL APPROACH CHART
(VAC)

NATAL / Augusto Severo, MIL (SBNT)

AD ELEV: 171'

RWY 16L/34R - 16R/34L

D-ATIS 132.65	APP NATAL 119.65 119.30 120.65 121.50	TWR NATAL 118.70 122.80 121.50	GNDC NATAL 121.90
------------------	--	-----------------------------------	----------------------



RMK:

- ALTITUDES MÍNIMAS NO CIRCUITO DE TRÁFEGO / MINIMUM ALTITUDES IN TRAFFIC CIRCUIT.
 - JATO / JET: 1700'
 - HÉLICE / PROPELLER: 1200'
 - HEL: 700'
- INFORMAÇÕES COMPLEMENTARES NO VERSO.
SEE REVERSE SIDE FOR ADDITIONAL INFORMATION.

CHANGES: AD ELEV. ALT. FREQ. LAYOUT. RMK.

—RMK—

- 3- CKT RWY12/30 PADRÃO E SUJEITO AUTH ATC.
STANDARD TRAFFIC PATTERN TO RWY 12/30 AND SUBJECT ATC CLEARANCE.
- 4- CKT SETOR "E" EXCLUSIVO ACFT ESQUADRÕES AÉREOS SEDIADOS EM SBNT
OU DESLOCADOS PARA ALA10 .
*SECTOR "E" CKT AVAILABLE JUST FOR AIR SQUADRON BASED IN SBNT OR
REPLACED TO ALA10.*
- 5- PARA POUSO EM SBSG, VER VAC DESSE AERÓDROMO.
FOR LANDING IN SBSG, SEE VAC OF THIS AERODROME.
- 6- OBSERVAR AIC SOBRE CIRCULAÇÃO AÉREA VISUAL NA TERMINAL NATAL (SBXT).
SEE AIC ABOUT VISUAL FLIGHT IN NATAL TERMINAL AREA (SBXT).