

**INSTRUMENT APPROACH  
CHART (IAC)**

**BAGÉ / Comandante Gustavo Kraemer (SBBG)**

**RNAV (GNSS) RWY 06**

**AD ELEV: 611'**

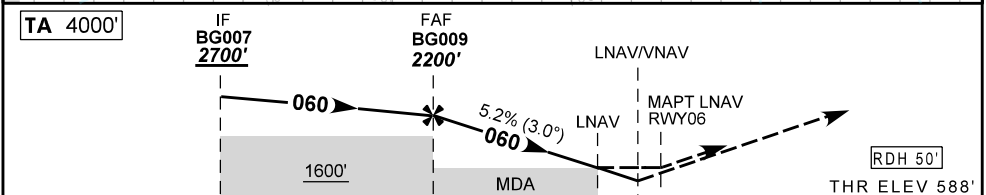
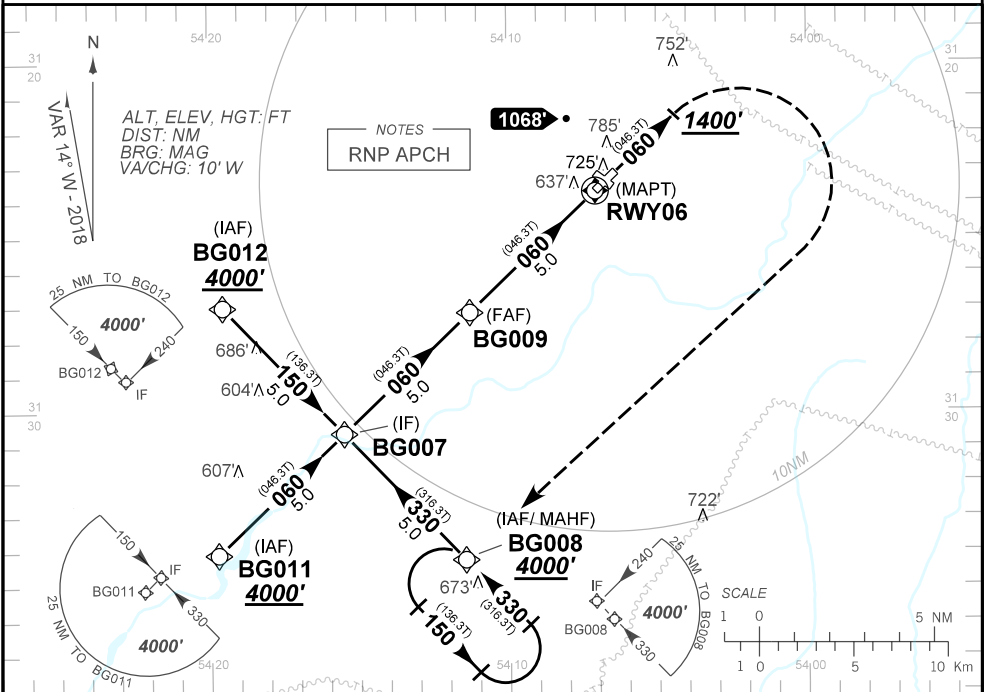
<b>ATIS</b> NIL	<b>APP</b> NIL		<b>AFIS BAGÉ</b> 125.85		<b>GNDC</b> NIL
<b>N/A</b>	<b>FINAL CRS</b> 060°	<b>FAF</b> 2200'	<b>LNAV/VNAV</b> DA / (OCH): 875' (290')		<b>LNAV</b> MDA / (OCH): 990' (410')

APCH Perdida: Subir para **4000'** no rumo 060. Ao passar **1400'**, curvar à DIREITA direto BG008 para espera.

*Missed APCH: Climb to **4000'** on course 060. On passing **1400'**, turn RIGHT direct to BG008 for holding.*

RMK: 1) Para sistemas não compensados Baro-VNAV, LNAV/VNAV NÃO AUTORIZADO abaixo de -10 °C.

1) For uncompensated systems Baro-VNAV, LNAV/VNAV NOT AUTHORIZED below -10 °C.



TO THR 06 (NM) 10.0 5.0 1.1 0.8 0.0

	<b>FAF</b>	<b>4.0</b>	<b>3.0</b>	<b>2.0</b>	<b>1.1</b>	<b>RWY06</b>	<b>KT</b>	<b>090</b>	<b>110</b>	<b>130</b>	<b>150</b>	<b>170</b>	<b>190</b>
	<b>2200</b>	<b>1911</b>	<b>1593</b>	<b>1275</b>	<b>990</b>	<b>ALT</b>	<b>FPM</b>	<b>500</b>	<b>600</b>	<b>700</b>	<b>800</b>	<b>NA</b>	<b>NA</b>
	<b>1612</b>	<b>1324</b>	<b>1005</b>	<b>687</b>	<b>410</b>	<b>(HGT)</b>	<b>FAF-MAPT</b>	<b>NA</b>					

<b>STRAIGHT-IN</b>	<b>CAT</b>	<b>A</b>	<b>B</b>	<b>C</b>	<b>D</b>	<b>E</b>
	<b>LNAV/VNAV</b>	DA / (OCH)	875' / (290')			<b>NA</b>
	ALS/NO ALS/ RVR ALS (m)	NIL / 1600 / NIL				
<b>LNAV</b>	MDA / (OCH)	990' / (410')				
	ALS/NO ALS/ RVR ALS (m)	NIL / 1600 / NIL			NIL / 1900 / NIL	
<b>CIRCLING</b>	MDA / (OCH)	<b>NA</b>				
	VIS (m)	<b>NA</b>				

CHANGES: NEW CHART.