

**INSTRUMENT APPROACH  
CHART (IAC)**

**PRESIDENTE PRUDENTE / Presidente Prudente (SBDN)**

**RNAV(GNSS) RWY 12**

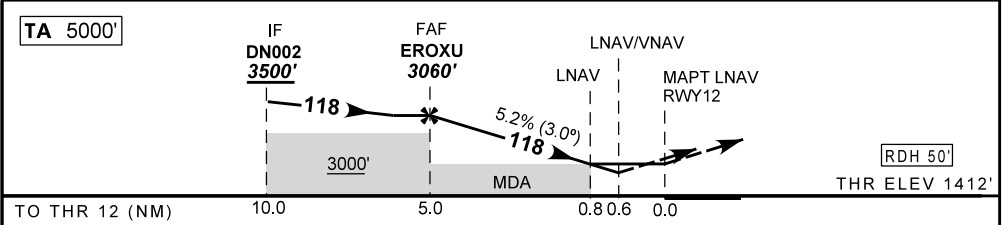
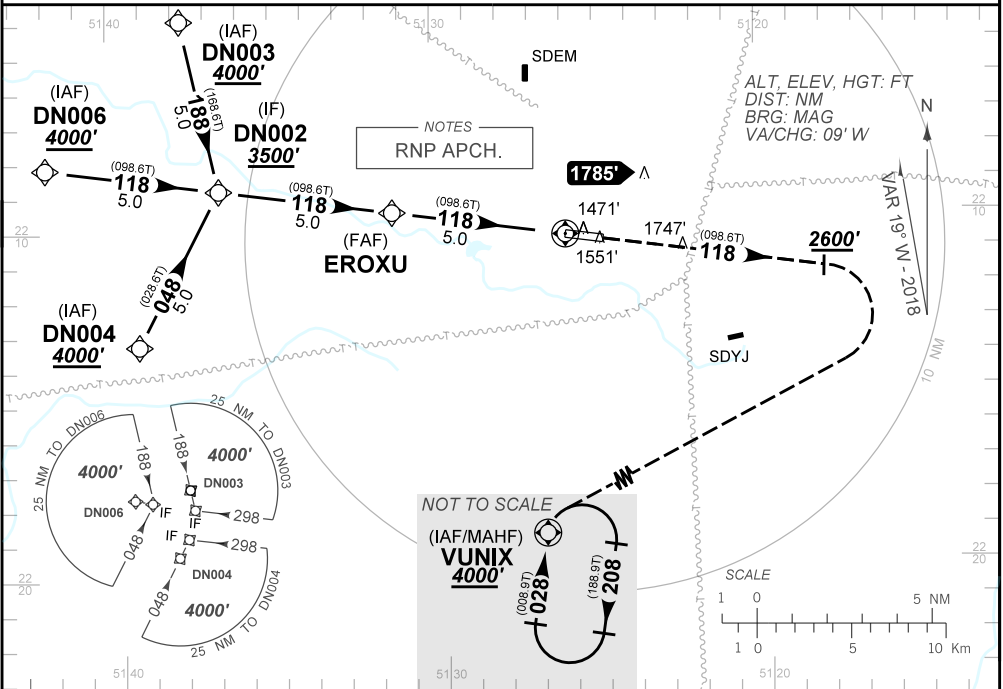
**AD ELEV: 1483'**

|             |                        |              |   |  |                                   |
|-------------|------------------------|--------------|---|--|-----------------------------------|
| ATIS<br>NIL | APP PRUDENTE<br>125.45 |              | TWR PRUDENTE<br>118.45                  |  | AFIS PRUDENTE<br>125.45           |
| N/A         | FINAL CRS<br>118°      | FAF<br>3060' | LNAV/VNAV<br>DA / (OCH): 1674' / (262') |  | LNAV<br>MDA / (OCH): 1730' (320') |

APCH Perdida: Subir para **4000'**. Após **2600'**, curvar à DIREITA direto VUNIX para espera.

Missed APCH: Climb to **4000'**. After **2600'**, turn RIGHT direct to VUNIX for holding.

RMK: 1) Sistemas não compensados Baro-VNAV, LNAV/VNAV NÃO AUTORIZADO abaixo de 0°C ou acima de 48°C.  
1) For uncompensated systems Baro-VNAV, LNAV/VNAV NOT AUTHORIZED below 0°C or above 48°C.



|  |       |      |      |      |      |       |  |          |     |     |     |     |     |     |
|--|-------|------|------|------|------|-------|--|----------|-----|-----|-----|-----|-----|-----|
|  | EROXU | 4.0  | 3.0  | 2.0  | 0.8  | RWY12 |  | KT       | 090 | 110 | 130 | 150 | 170 | 190 |
|  | 3060  | 2735 | 2417 | 2098 | 1730 | ALT   |  | FPM      | 500 | 600 | 700 | 800 | 900 | N/A |
|  | 1648  | 1323 | 1005 | 686  | 320  | (HGT) |  | FAF-MAPT | NA  |     |     |     |     |     |

|             |                         |                  |   |   |   |   |
|-------------|-------------------------|------------------|---|---|---|---|
| STRAIGHT-IN | CAT                     | A                | B | C | D | E |
| LNAV/VNAV   | DA / (OCH)              | 1674' / (262')   |   |   |   |   |
|             | ALS/NO ALS/ RVR ALS (m) | NIL / 1600 / NIL |   |   |   |   |
| LNAV        | MDA / (OCH)             | 1730' / (320')   |   |   |   |   |
|             | ALS/NO ALS/RVR ALS (m)  | NIL / 1600 / NIL |   |   |   |   |
| CIRCLING    | MDA / (OCH)             | NA               |   |   |   |   |
|             | VIS (m)                 |                  |   |   |   |   |

CHANGES: PROC. LAYOUT, MNM OPR. DEC. RMK.