

STANDARD DEPARTURE CHART
INSTRUMENT (SID)

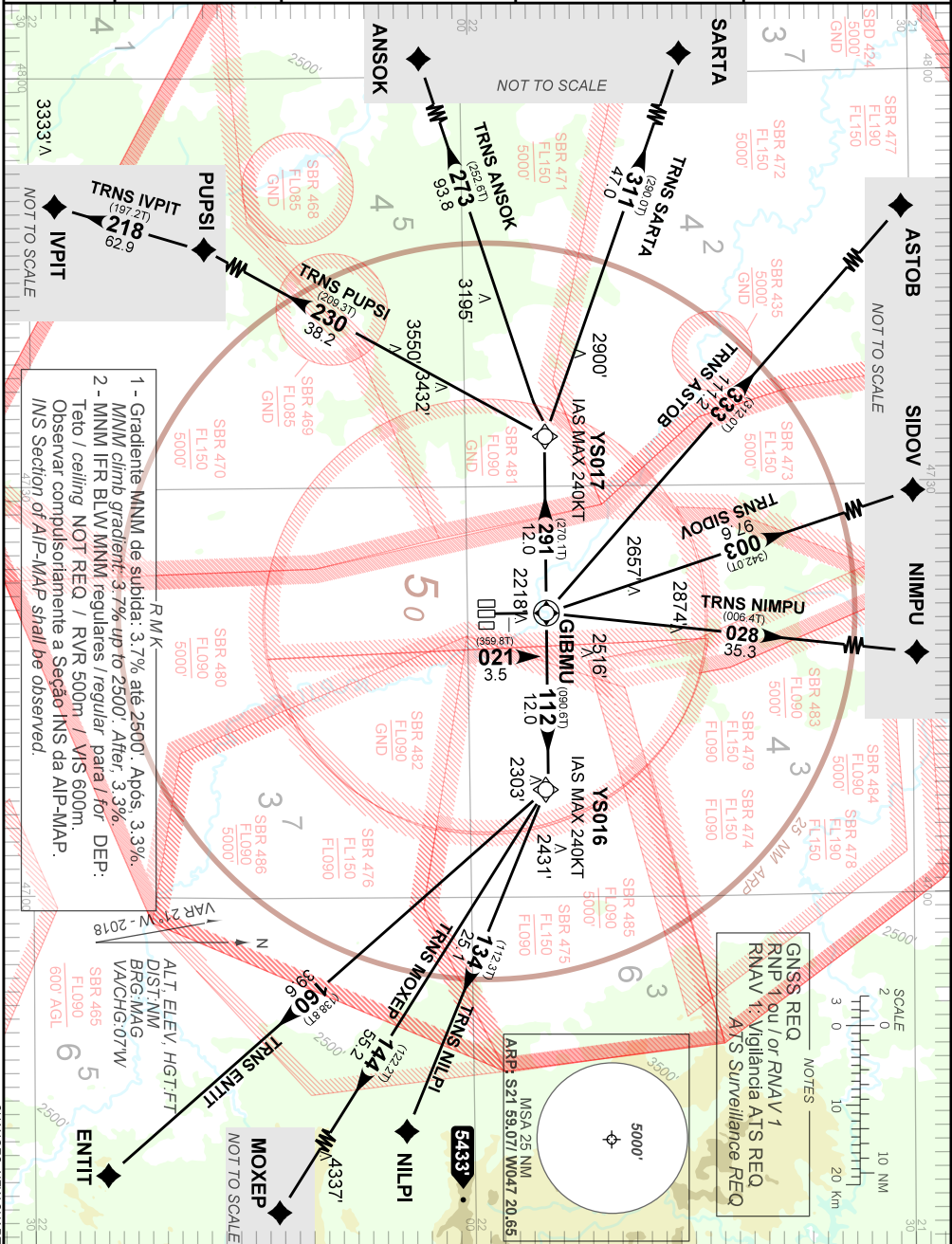
PIRASSUNUNGA / Campo Fontenelle, MIL (SBYS)

RWY 02C

RNAV GIBMU 1A

AD ELEV: 1976'

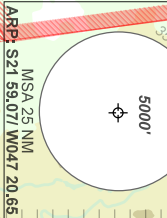
| | | | | |
|----------|---|--|--|---|
| TA 7000' | TWR ACADEMIA 118.30 122.80 121.50 | APP ACADEMIA 119.55 119.75 120.10 120.40 122.40 122.80 123.60 134.60 121.50 | ACC CURITIBA 126.95 128.25 135.10 125.075 121.50 | ACC BRASÍLIA 123.35 126.15 124.20 126.45 121.50 |
|----------|---|--|--|---|



- 1 - Gradiente MNIM de subida: 3.7% até 2500'. Após, 3.3%. MNM climb gradient: 3.7% up to 2500'. After, 3.3%.
- 2 - MNM IFR BLW MNM regulares / regular para / for DEP: Teto / ceiling NOT REQ / RVR 500m / VIS 600m. Observar cuidadosamente a Seção INS da AIP-MAP. INS Section of AIP-MAP shall be observed.

NOTES

GNSS REQ
RNP 1 ou / or RNAV 1
RNAV 1: Vigilância ATIS REQ
ATIS Surveillance REQ



CHANGES: NEW CHART.