

AD ELEV: 2461'

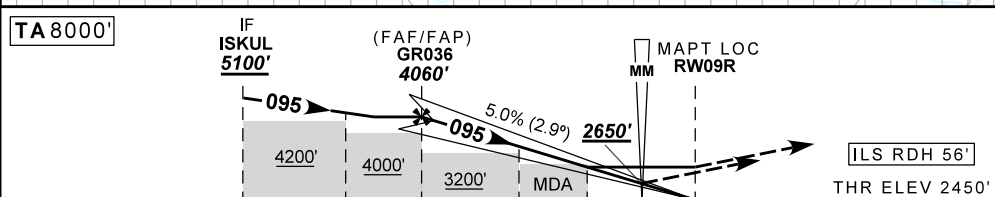
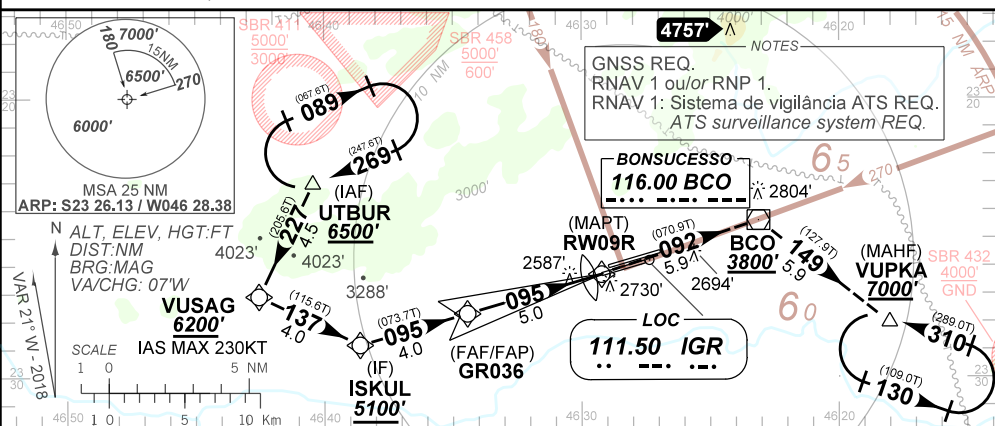
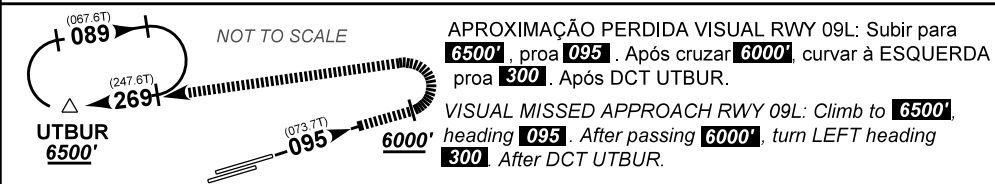
ILS S ou/or LOC S RWY 09R

D-ATIS 127.75	APP SÃO PAULO 129.75 119.15 120.45 120.85 133.85 121.50	TWR GUARULHOS 118.40 132.75 135.20 121.50	GNDC GUARULHOS 121.70 126.90
LOC IGR 111.50 MHz	FINAL CRS 095°	FAF: 4060'	CAT I DA / (OCH): 2650' (200')
		LOC only MDA / (OCH): 3030' (550')	

APCH Perdida: Subir para **7000'**. Manter rumo **092** até VOR BCO. Após, curvar à DIREITA para espera em VUPKA.
Missed APCH: Climb to **7000'**. Mantain course **092** until VOR BCO. Then, turn RIGHT for holding at VUPKA.

RMK: 1) (*) RVR ALS 550m para aproximação utilizando Diretor de Voo, Piloto Automático ou Head-Up Display (HUD).

1) (*) RVR ALS 550m for approach using a Flight Director, Autopilot or Head-Up Display (HUD).



TO THR 15 (NM)	9.0	7.0	5.0	2.8	1.7	0.5	0.0
TO BCO (DME)	14.9	12.9	10.9	8.7	7.6	6.4	5.9

GR036	4.0	3.0	2.0	1.7	RWY09R														
4060	3738	3430	3122	3030	ALT														
1610	1288	980	672	580	(HGT)														

STRAIGHT-IN	CAT	A	B	C	D	E
	DA / (OCH)	2650' / (200')				
CAT I	ALS/NO ALS/ RVR ALS (m)	800 / 1200 / 700*				
	MDA / (OCH)	3030' / (550')				
LOC	ALS/NO ALS/ RVR ALS (m)	800 / 1600 / NIL		1800 / 2500 / NIL		
	MDA / (OCH)	NA				
CIRCLING	MDA / (OCH)	NA				
	VIS (m)	NA				

CHANGES: PROC.