

**INSTRUMENT APPROACH
CHART (IAC)**

CASCABEL / Coronel Adalberto Mendes da Silva (SBCA)

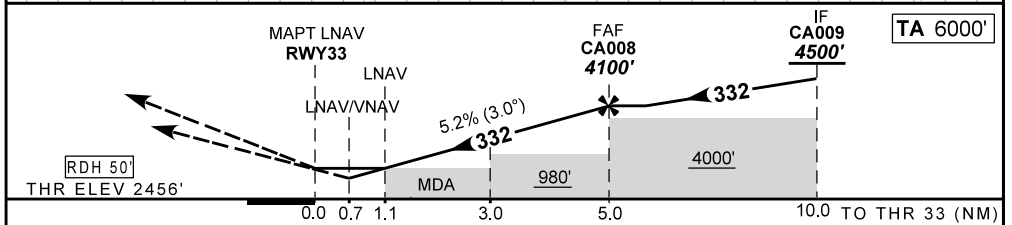
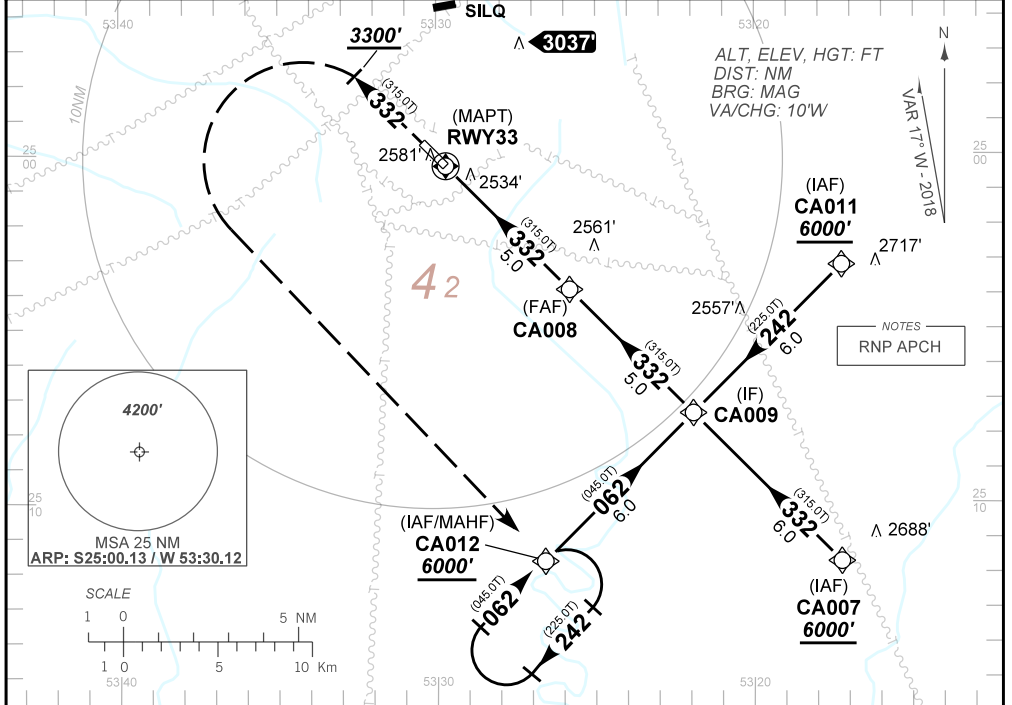
AD ELEV: 2481'

RNAV (GNSS) RWY 33

ATIS NIL	APP NIL	AFIS CASCABEL 131.85	GNDC NIL
N/A	FINAL CRS 332°	FAF 4100'	LNAV/VNAV DA / (OCH): 2742' (290')
			LNAV MDA / (OCH): 2850' (400')

APCH Perdida: Subir para **6000'**. Manter rumo **332°**. Após **3300'** curvar a ESQUERDA direto CA012 para espera. **Missed APCH: Climb to 6000'**. Maintain course **332°** until **3300'**. After, turn LEFT direct CA012 for holding.

RMK: Para sistemas BARO-VNAV não compensados, procedimentos LNAV/VNAV não autorizado abaixo de -10°C.
For uncompensated systems BARO-VNAV, LNAV/VNAV procedure not authorized below -10°C.



RWY33	1.1	2.0	3.0	4.0	CA008						
ALT	2850	3143	3461	3780	4100						
(HGT)	400	687	1005	1324	1644						

STRAIGHT-IN	CAT	A	B	C	D	E
	DA / (OCH)	2742' / (290')				
LNAV/VNAV	ALS/NO ALS/ RVR ALS (m)	NIL / 1400 / NIL				
	MDA / (OCH)	2850' / (400')				
LNAV	ALS/NO ALS/ RVR ALS (m)	NIL / 1600 / NIL			NIL / 1800 / NIL	
	MDA / (OCH)	NA				
CIRCLING	MDA / (OCH)	NA				
	VIS (m)	NA				

CHANGES: NEW CHART.