

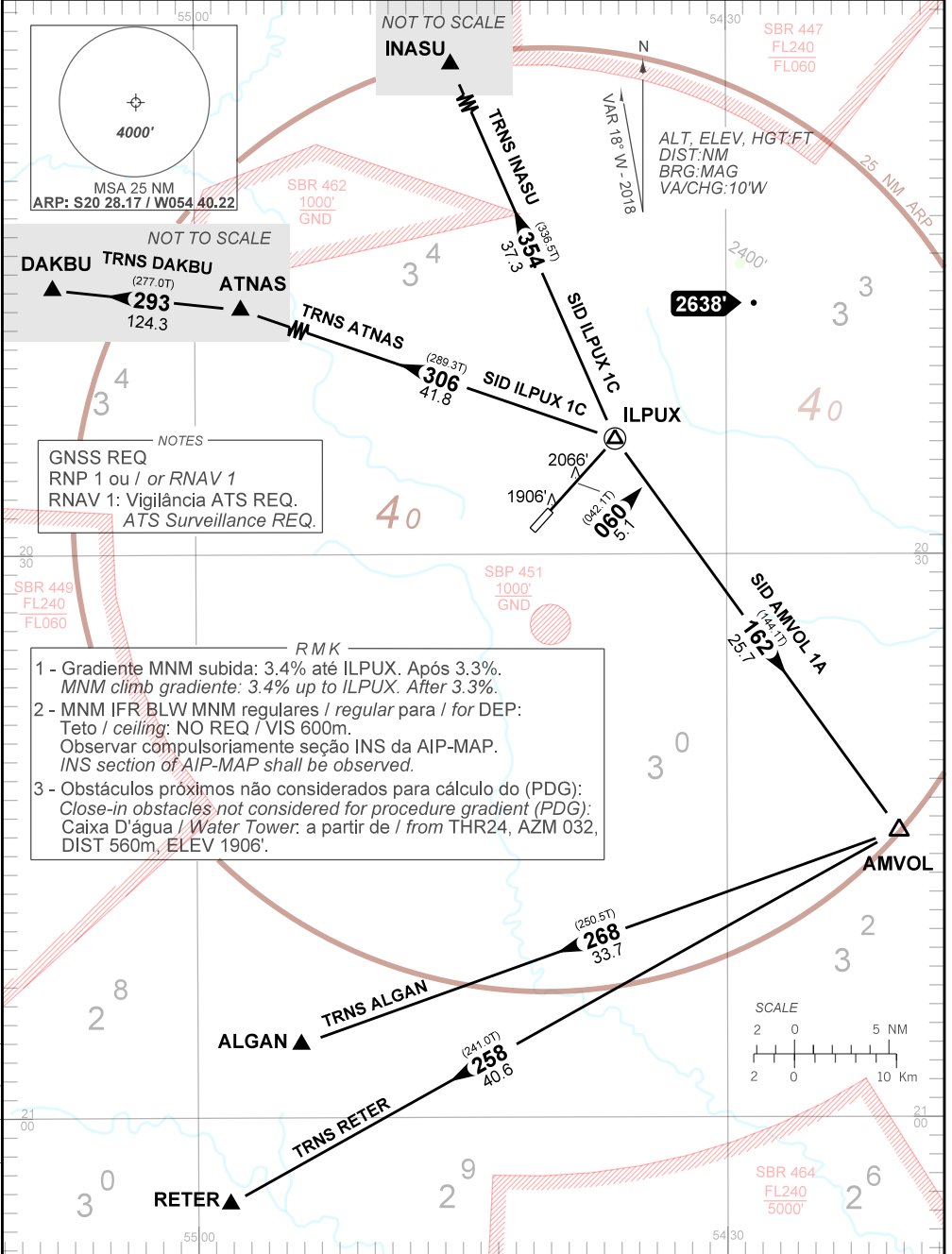
STANDARD DEPARTURE CHART  
INSTRUMENT (SID)

CAMPO GRANDE / Campo Grande, INTL (SBCG)  
RWY 06

AD ELEV: 1834'

RNAV AMVOL 1A - ILPUX 1C

TA 5000'	TWR CAMPO GRANDE 118.10 121.50	APP CAMPO GRANDE 119.35 119.65 120.20 121.00 121.50	ACC CURITIBA 128.15 124.85 128.35 135.80 129.25 123.70 121.50
----------	-----------------------------------	--	---



NOTES  
GNSS REQ  
RNP 1 ou / or RNAV 1  
RNAV 1: Vigilância ATS REQ.  
ATS Surveillance REQ.

RMK

- 1 - Gradiente MNM subida: 3.4% até ILPUX. Após 3.3%.  
MNM climb gradient: 3.4% up to ILPUX. After 3.3%.
- 2 - MNM IFR BLW MNM regulares / regular para / for DEP:  
Teto / ceiling: NO REQ / VIS 600m.  
Observar compulsoriamente seção INS da AIP-MAP.  
INS section of AIP-MAP shall be observed.
- 3 - Obstáculos próximos não considerados para cálculo do (PDG):  
Caixa D'água / Water Tower: a partir de / from THR24, AZM 032,  
DIST 560m, ELEV 1906'.

CHANGES: DEC. IDENT. RMK PROC. LAYOUT.