

INSTRUMENT APPROACH CHART (IAC)

PORTO ALEGRE / Salgado Filho, INTL (SBPA)

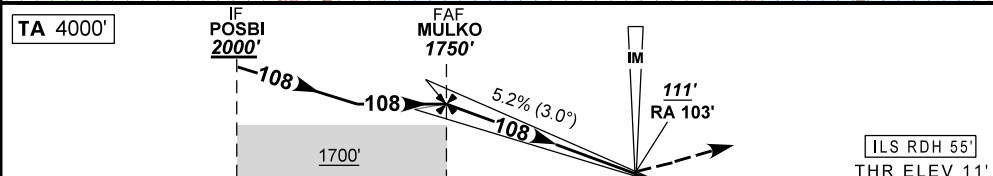
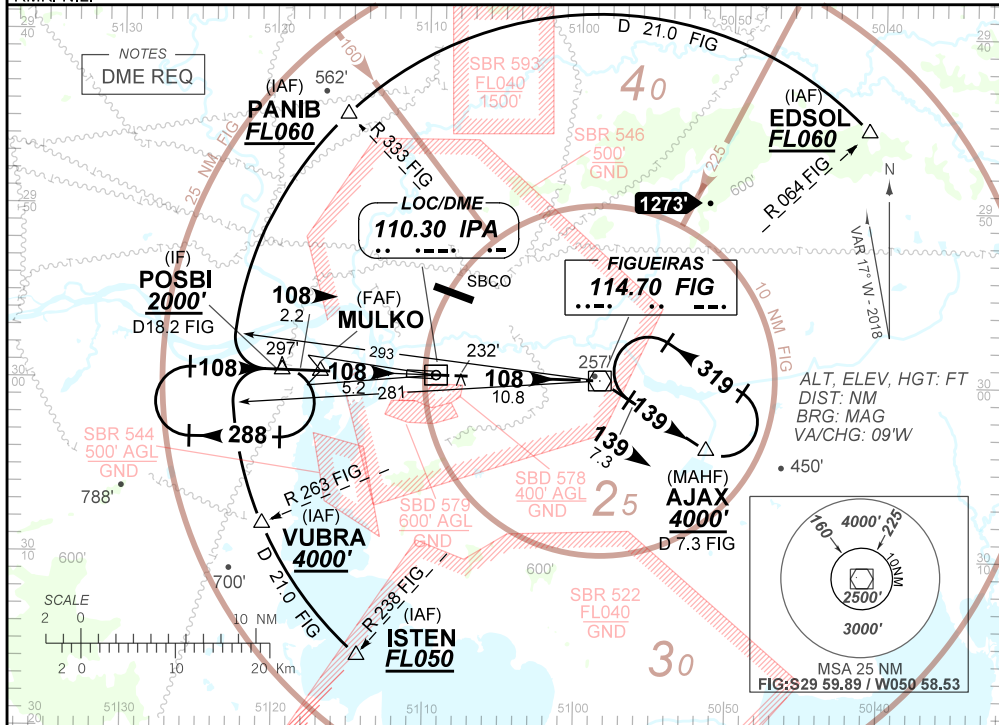
AD ELEV: 12'

ILS Y RWY 11 CAT II

D-ATIS 132.35	APP PORTO ALEGRE 119.00 120.10 120.55 128.90 121.50	TWR PORTO ALEGRE 118.10 121.50	GND PORTO ALEGRE 121.90
LOC IPA 110.30 MHz	FINAL CRS 108°	FAF 1750'	CAT II DA / (OCH): 111' (100')
			N/A

APCH Perdida: 1) Subir para **4000'**. Manter rumo **108** até VOR FIG. Após curvar à DIREITA, RDL **139** VOR FIG para espera em AJAX.
 Missed APCH: 1) Climb to **4000'**. Maintain course **108** until VOR FIG. Then turn RIGHT, to intercept **139** RDL FIG VOR for holding at AJAX.

RMK: NIL.



TO THR 12 (NM)	7.4	5.2	0.1	0.0
TO IPA (DME)	8.8	6.6	1.5	1.4

MULKO	4.0	3.0	2.0	1.0	0.1	RWY 11	KT	090	110	130	150	170	190
	1750	1354	1029	707	385	111	FPM	500	600	700	800	900	1000
	1739	1343	1018	696	374	100	FAF-MAPT	NA					

STRAIGHT-IN	CAT	A	B	C	D	E
CAT II	DA / (OCH) / RA	111' / (100') / 103'				NA
	RVR ALS (m)	350				
CIRCLING	MDA / (OCH)	NA				
	VIS (m)					

CHANGES: LAYOUT, DEC. MSA, PROC. ELEV.