

STANDARD DEPARTURE CHART
INSTRUMENT (SID)

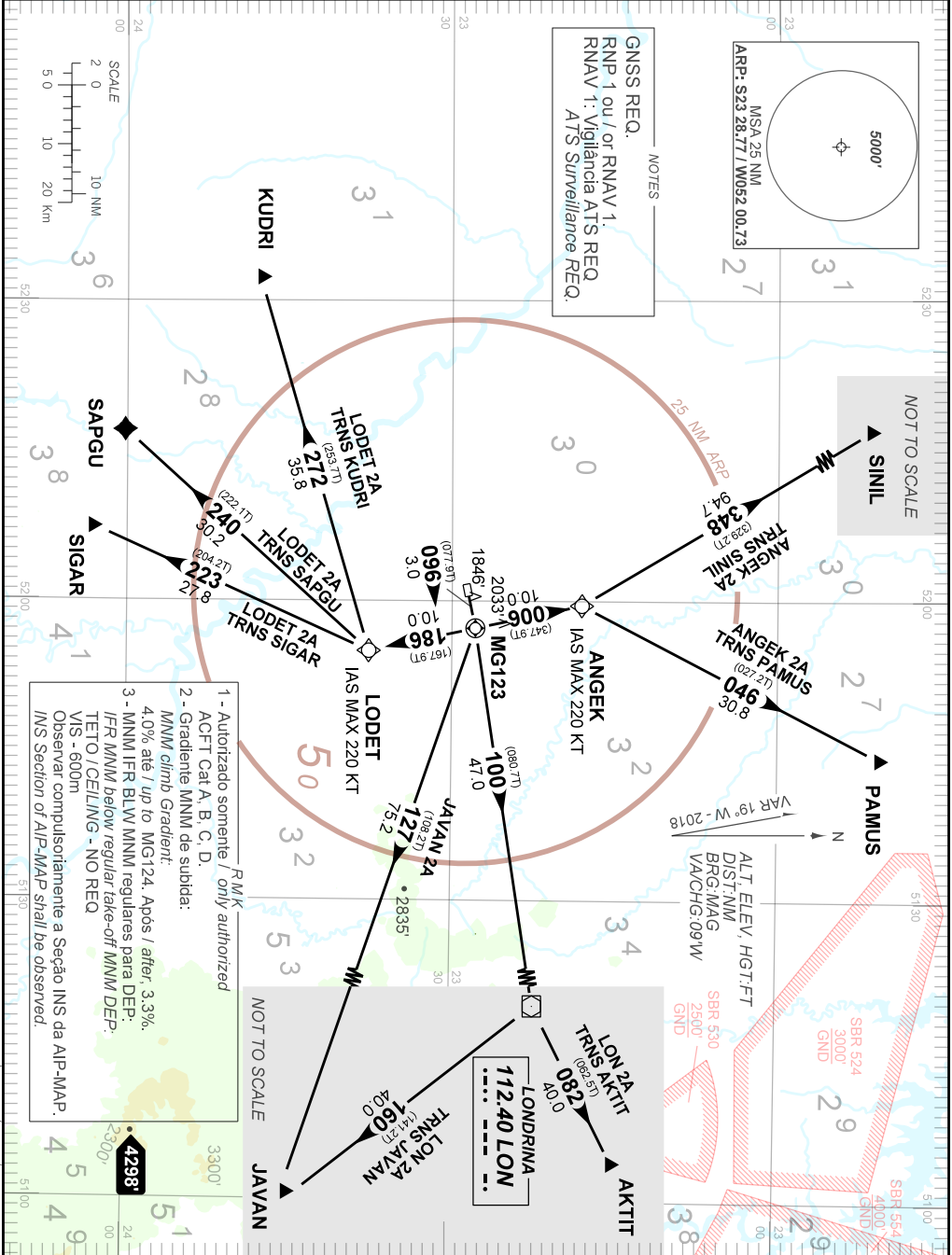
MARINGÁ / Silvio Name Júnior (SBMG)

RWY 10

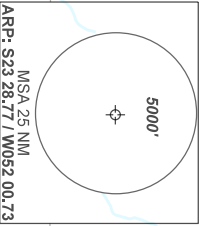
RNAV ANGEK 2A - JAVAN 2A - LODET 2A - LON 2A

AD ELEV: 1801'

TA 5000'	TWR MARINGÁ 118.75	APP LONDRINA 129.70	ACC CURITIBA	
			124.90 125.80 133.50 124.275 135.10	127.20 133.80 125.075 121.50



NOTES
GNSS REQ.
RNP 1 ou / or RNAV 1.
RNAV 1: Vigilância ATS REQ.
ATS Surveillance REQ.



NOT TO SCALE
SINIL

PAMUS

AKTIT

- RMK
- 1 - Autorizado somente / only authorized ACFT Cat A, B, C, D.
 - 2 - Gradiente MNIM de subida: MNIM climb Gradient: 4.0% até / up to MG-124. Após / after, 3.3%.
 - 3 - MNIM IFR BLW MNIM regulares para DEP-IFR MNIM below regular take-off MNIM DEP-TETO / CEILING - NO REQ
- Observer compulsoriamente a Seção INS da AIP-MAP. INS Section of AIP-MAP shall be observed.

ALT. ELEV. HGT/FT
DIST/NM
BRG/MAG
VA/CHG-09/W
SBR \$30
2500
GND
SBR \$24
3000
GND
SBR \$54
4100
GND

CHANGES, VAR, IDENT, LAYOUT, RMK.