

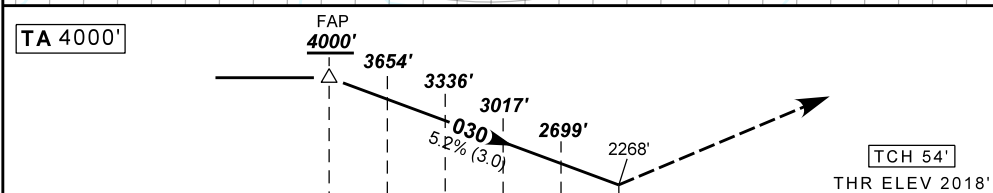
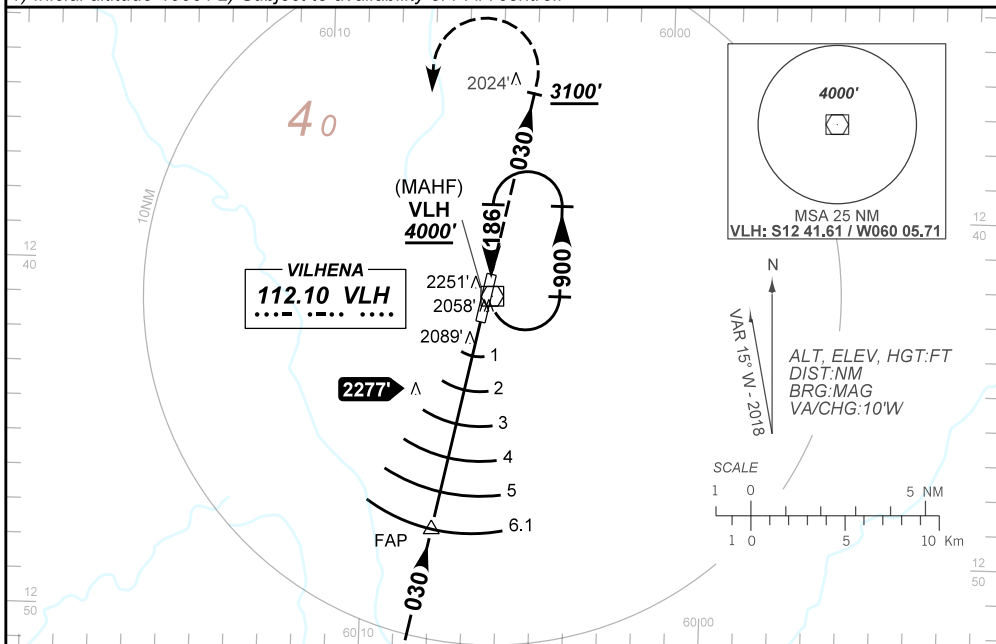
ATIS NIL	APP VILHENA 118.05 130.10	AFIS VILHENA 125.90	PAR VILHENA 133.10 128.60	GNDC NIL
N/A	FINAL CRS 030°	FAP 4000'	PAR DA / (OCH): 2268' / (260')	N/A

APCH Perdida: 1) Subir **4000'**. Manter a proa **030°** até **3100'**. Após, curvar à ESQUERDA direto VOR Vilhena para espera.

Missed APCH: 1) Climb **4000'**. Mantain heading **030°** until **3100'**. Then, turn LEFT direct VOR Vilhena for holding.

RMK: 1) Altitude de início 4000'. 2) Sujeito a disponibilidade do controle PAR.

1) Inicial altitude 4000'. 2) Subject to availability of PAR control.



TO THR 03 (NM) 6.1 5.0 4.0 3.0 2.0 0.6 0.0

RWY03	NIL	KT	090	110	130	150	170	190
ALT (HGT)	NIL	FPM	500	600	700	800	900	1000
	NIL	FAF-MAPT	NA					

STRAIGHT-IN	CAT	A	B	C	D	E
PAR	DA / (OCH)	2268' / (260')				
	ALS/NO ALS/ RVR ALS (m)	NIL / 1300 / NIL				
CIRCLING	MDA / (OCH)	NA				
	VIS (m)	NA				

CHANGES: NEW CHART.