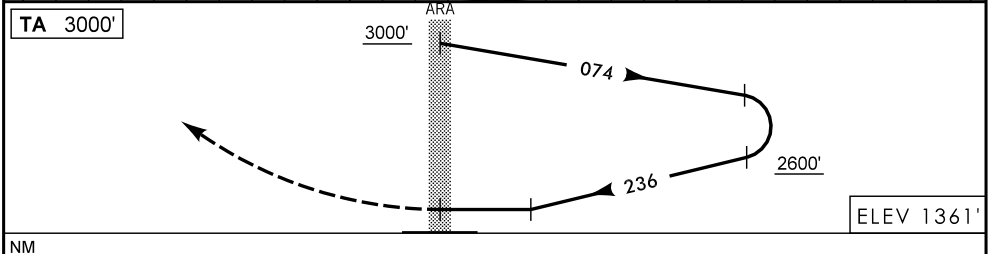
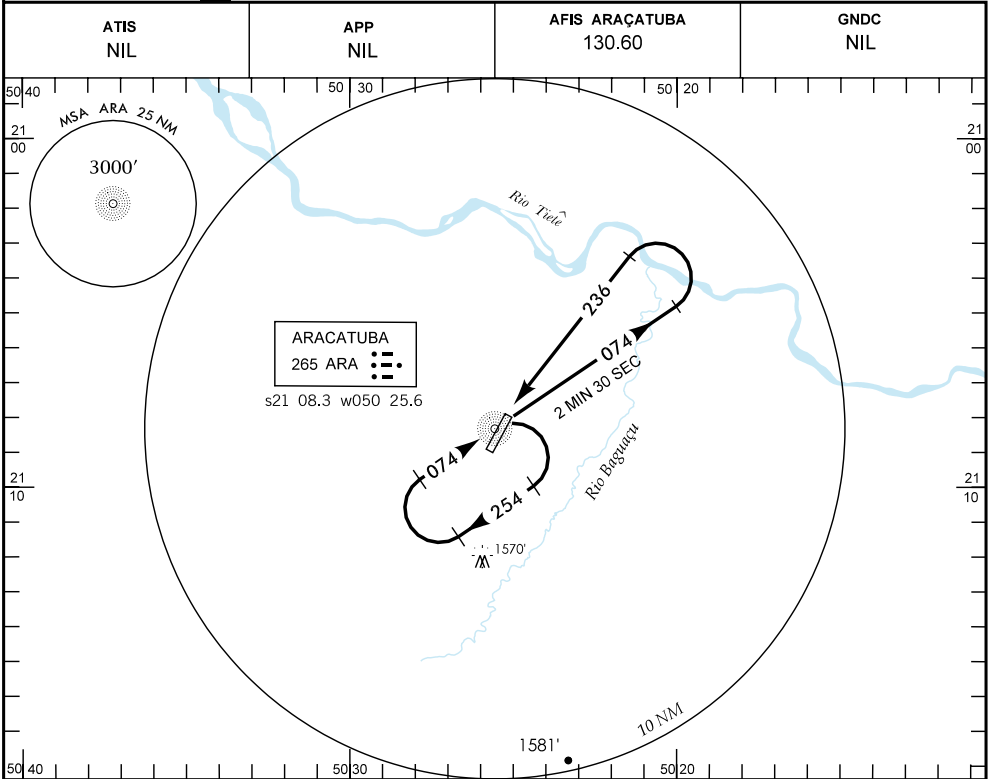


**IAC - SBAU**

WGS-84



NM

**APROXIMAÇÃO PERDIDA** SUBIR PARA 3000' NO QDR 236.

RMK: 1) NIL.

C	POUSO DIRETO RWY 23		IFR OPS		DIURNA / NOTURNA		PARA CIRCULAR			
	NDB									
A	MDA 1870'		TETO 600'				CAT	MDA	TETO	VIS
B	1600 M						A	1870'	600'	1600 M
C	2400 M						B			2400 M
D	NA						C			
E							D	NA		
							E			

RAZÃO DE DESCIDA NA APROXIMAÇÃO FINAL										
KT	090	110	120	130	140	160				
FPM	600									