

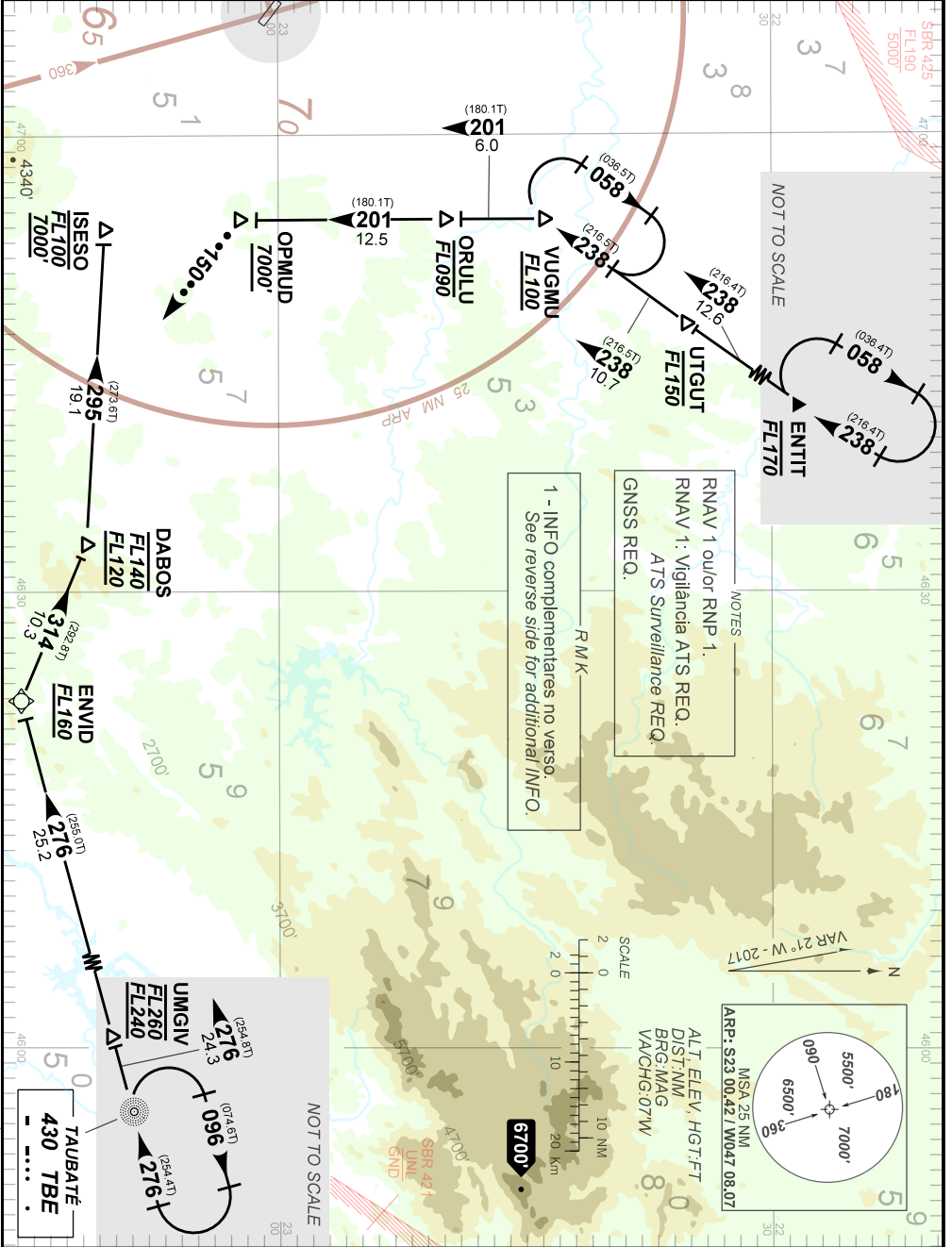
STANDARD ARRIVAL CHART
INSTRUMENT (STAR)

CAMPINAS / Viracopos, INTL (SBKP)
RWY 33

AD ELEV: 2170'

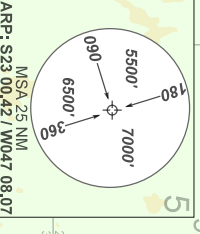
RNAV ENTIT 1A - TBE 1A

TA 8000'	D-ATIS 127.825	ACC BRASÍLIA 123.35 134.00 126.80 128.50 126.15 121.50	APP SÃO PAULO 132.10 120.25 119.80 119.25 129.75 121.50	TWR CAMPINAS 118.25 121.50
----------	-------------------	--	---	-------------------------------



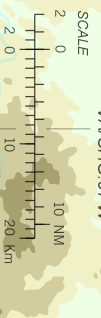
1 - INFO complementares no verso.
See reverse side for additional INFO.

NOTES
RNAV 1 ou/ou RNP 1.
RNAV 1: Vigilância ATIS REQ.
ATIS Surveillance REQ.
GNSS REQ.



MSA 25 NM
ARRP: S23 00.42 / W047 08.07

ALT: ELEV, HGT, FT
DIST: NM
BRG: MAG
VA: CHG: 07W



FALHA DE COMUNICAÇÃO
COMMUNICATION FAILURE

CHEGADA ENTIT 1A

Complete chegada até OPMUD e execute procedimento autorizado pelo ATC. Ou, se durante vetorização na proa 150, manter esta proa, altitude MNM 7000FT até 20 DME CPN. Então, curvar à direita para interceptar aproximação final.

CHEGADA TBE 1A

Complete chegada até ISESO e execute procedimento autorizado pelo ATC.

ENTIT 1A ARRIVAL

Complete arrival to OPMUD and execute procedure authorized by ATC. Or, if under vectoring on heading 150, maintain heading, MNM altitude 7000' to 20 DME CPN. Then, turn right to intercept final approach.

TBE 1A ARRIVAL

Complete arrival to ISESO and execute procedure authorized by ATC.