

**INSTRUMENT APPROACH  
CHART (IAC)**

**VITÓRIA / Eurico de Aguiar Salles (SBVT)**

**RNAV(GNSS) Z RWY 02**

**AD ELEV: 34'**

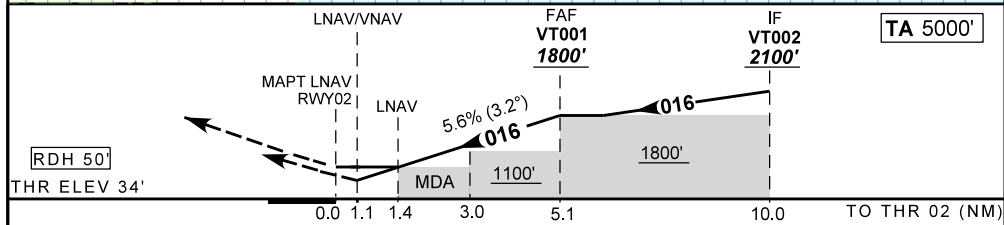
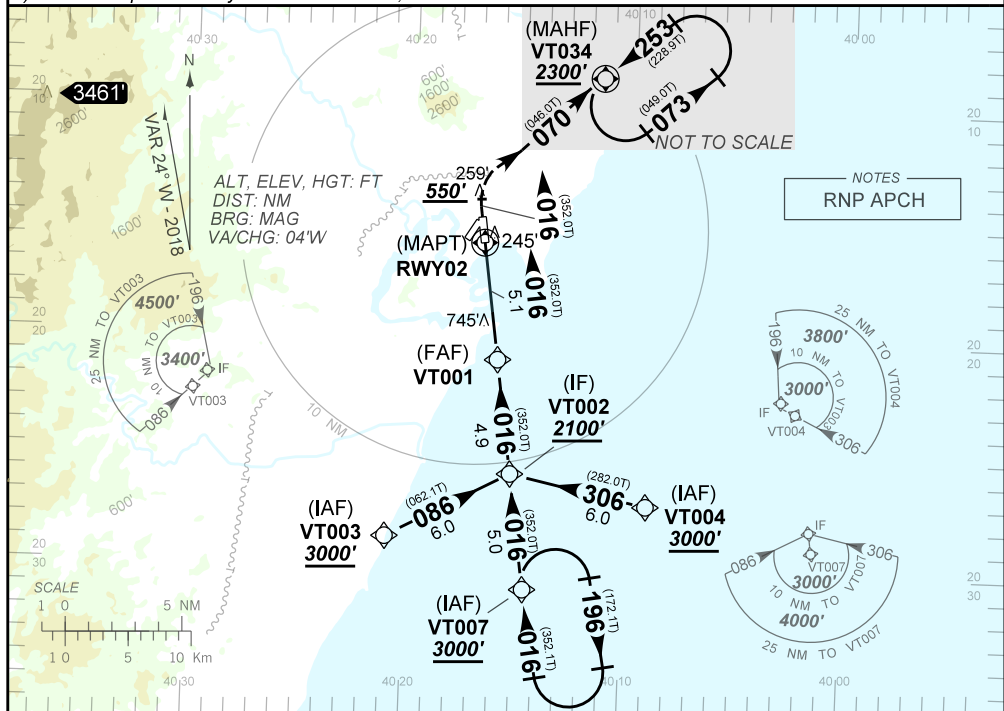
<b>ATIS</b> <b>125.575</b>	<b>APP VITÓRIA</b> <b>119.85 121.50</b>		<b>TWR VITÓRIA</b> <b>118.10 121.50</b>		<b>GNDC</b> <b>121.95</b>
<b>N/A</b>	<b>FINAL CRS</b> <b>016°</b>	<b>FAF</b> <b>1800'</b>	<b>LNAV/VNAV</b> <b>DA / (OCH): 406' (380')</b>		<b>LNAV</b> <b>MDA / (OCH): 500' (470')</b>

**APCH Perdida:** Subir para **2300'**. Ao passar **550'**, curvar à DIREITA rumo **070** até VT034 para espera.

**Missed APCH:** Climb to **2300'**. After **550'**, turn **RIGHT** course **070** up to VT034 for holding.

**RMK:** 1) Para sistemas não compensados Baro-VNAV, LNAV/VNAV NAO AUTORIZADO abaixo de 5°C ou acima de 40°C.

1) For uncompensated systems Baro-VNAV, LNAV/VNAV NOT AUTHORIZED below 5°C or above 40°C.



RWY02	1.4	2.0	3.0	4.0	VT001														
ALT	500	759	1100	1439	1800														
(HGT)	470	725	1066	1375	1766														

STRAIGHT-IN	CAT	A		B		C		D		E
		DA / (OCH)		406' / (380')		NIL / 1700 / NIL		500' / (470')		
LNAV/VNAV	ALS/NO ALS/RVR ALS (m)	NIL / 1700 / NIL		NIL / 1700 / NIL		NIL / 2200 / NIL				NA
		MDA / (OCH)		500' / (470')		NIL / 2200 / NIL				
LNAV	ALS/NO ALS/RVR ALS (m)	NIL / 1700 / NIL		NIL / 1700 / NIL		NIL / 2200 / NIL				NA
		MDA / (OCH)		600' / (570')		810' / (780')		1560' / (1530')		
CIRCLING	VIS (m)	1600		1600		4800				NA

CHANGES: NEW CHART.

AIRAC AMDT 10/18 21 JUN 18

DEPARTAMENTO DE CONTROLE DO ESPAÇO AÉREO

SBVT\_IAC\_01J 1/1

IAC RNAV(GNSS) Z RWY 02