

**INSTRUMENT APPROACH  
CHART (IAC)**

**SANTA MARIA / Santa Maria (SBSM)**

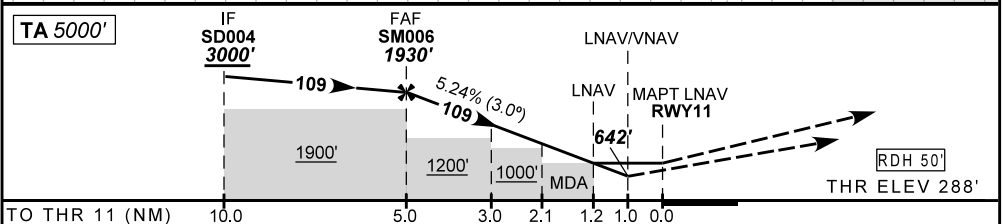
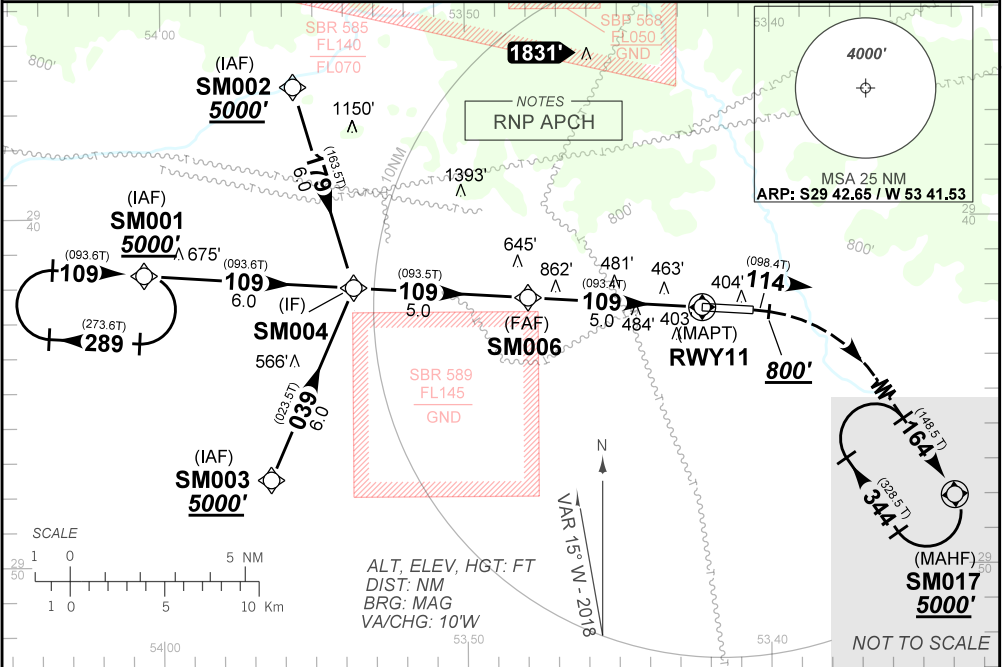
**AD ELEV: 289'**

**RNAV (GNSS) RWY 11**

ATIS <b>127.75</b>	APP SANTA MARIA <b>119.35 121.35 121.50</b>		TWR SANTA MARIA <b>118.30 118.85 121.50</b>		GNDC <b>NIL</b>
<b>N/A</b>	FINAL CRS <b>109°</b>	FAF <b>1930'</b>	LNAV / VNAV DA / (OCH): <b>642' / (360')</b>		LNAV MDA / (OCH): <b>730' / (450')</b>

APCH Perdida: Subir para **5000'**. Manter rumo **114** até **800'**. Curvar à DIREITA direto SM017 para espera.  
Missed APCH: Climb to **5000'**. Maintain course **114** up to **800'**. Turn RIGHT direct SM017 for holding.

RMK: Para sistemas não compensados, procedimento LNAV/VNAV não autorizado abaixo de -20°C.  
For uncompensated systems, LNAV/VNAV procedure not authorized below -20°C.



	SM006	4.0	3.0	2.0	1.2	RWY11									
	1930	1613	1295	976	730	ALT		KT	090	110	130	150	170	190	
	1642	1325	1007	688	442	(HGT)		FPM	500	600	700	800	900	1000	
								FAF-MAPT				NA			

STRAIGHT-IN	CAT	A	B	C	D	E
	DA / (OCH)	642' / (360')				NA
LNAV / VNAV	ALS/NO ALS/ RVR ALS (m)	NIL / 1600 / NIL				NA
	MDA / (OCH)	730' / (450')				
LNAV	ALS/NO ALS/RVR ALS (m)	NIL / 1600 / NIL		NIL / 2100 / NIL		
	MDA / (OCH)	NA				
CIRCLING	MDA / (OCH)	NA				
	VIS (m)					

CHANGES: NEW CHART.