

INSTRUMENT APPROACH
CHART (IAC)

PIRASSUNUNGA / Campo Fontenelle, MIL (SBYS)

RNAV (GNSS) RWY 20C

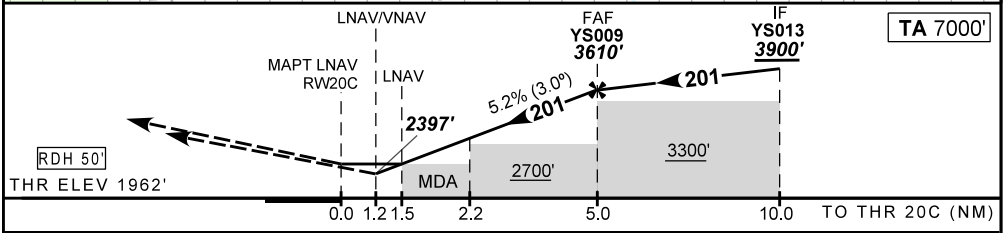
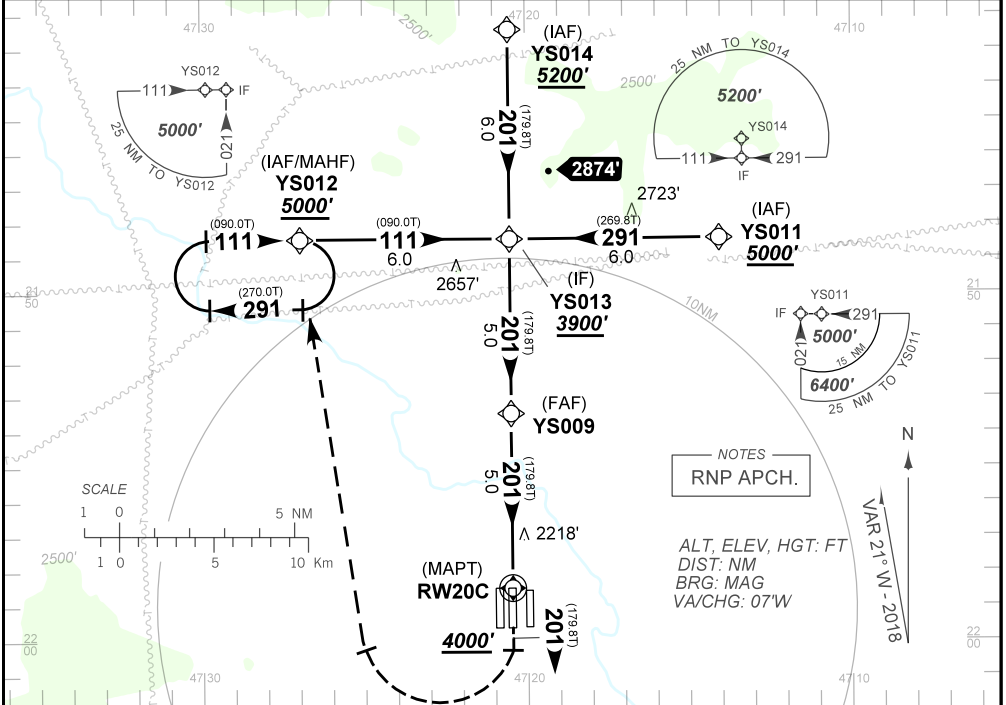
AD ELEV: 1976'

ATIS 127.70	APP ACADEMIA 119.55 119.75 120.10 120.40 122.40 121.50	TWR ACADEMIA 118.30 122.80 121.50	GNDC ACADEMIA 121.90
----------------	---	--------------------------------------	-------------------------

N/A	FINAL CRS 201°	FAF 3605'	LNAV/VNAV DA / (OCH): 2397' (435')	LNAV MDA / (OCH): 2470' (508')
-----	-------------------	--------------	---------------------------------------	-----------------------------------

APCH Perdida: 1) Subir para **5000'**. Ao passar **4000'**, curvar à DIREITA direto YS012 para espera.
Missed APCH: 1) Climb to **5000'**. After **4000'**, turn RIGHT direct to YS012 for holding.

RMK: 1) Para sistemas não compensados Baro-VNAV, LNAV/VNAV NAO AUTORIZADO abaixo de -10°C ou acima de 44°C.
1) For uncompensated systems Baro-VNAV, LNAV/VNAV NOT AUTHORIZED below -10°C or above 44°C.



RW20C	1.5	2.0	3.0	4.0	YS009		KT	090	110	130	150	170	190
ALT	2470	2650	2970	3290	3610		FPM	500	600	700	800	900	1000
(HGT)	508	688	1008	1328	1643		FAF-MAPT			NA			

STRAIGHT-IN	CAT	A	B	C	D	E
LNAV/VNAV	DA / (OCH)	2397' / (435')				NA
	ALS/NO ALS/RVR ALS (m)	NIL / 1600 / NIL				
LNAV	MDA / (OCH)	2470' / (508')				
	ALS/NO ALS/RVR ALS (m)	NIL / 1600 / NIL				
CIRCLING	MDA / (OCH)	NA				
	VIS (m)	NA				

CHANGES: NEW CHART.