

**INSTRUMENT APPROACH
CHART (IAC)**

SANTO ÂNGELO / Santo Ângelo (SBNM)

RNAV(GNSS) RWY 11

AD ELEV: 1056'

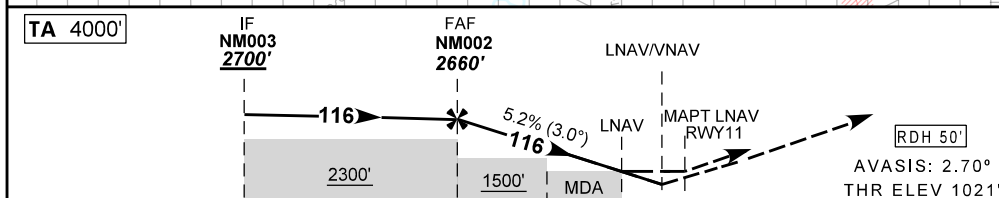
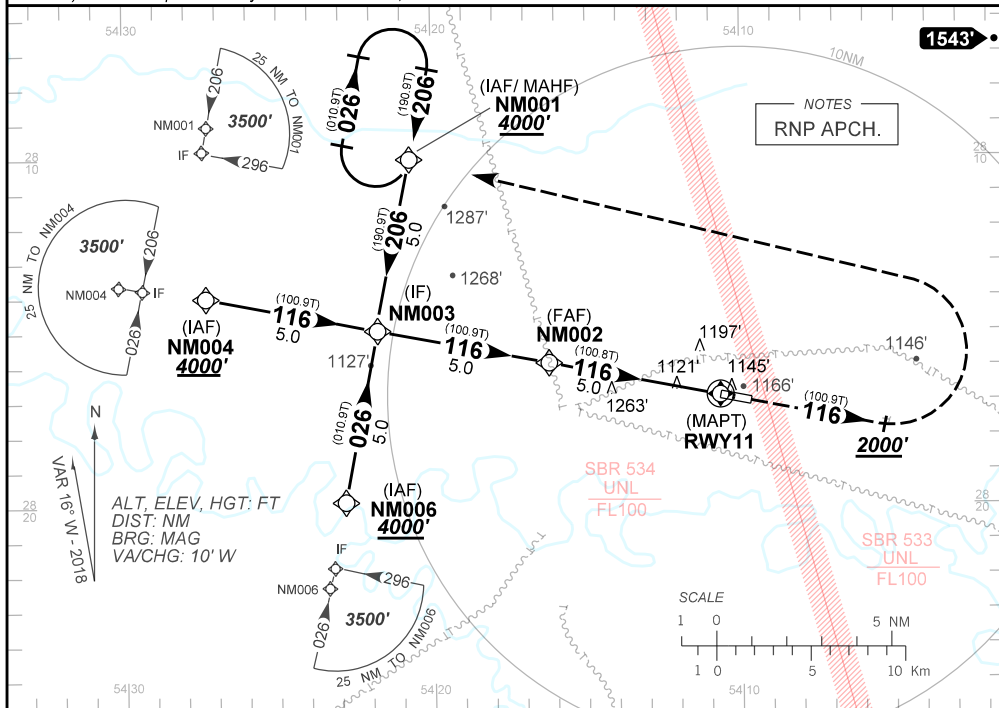
ATIS NIL	APP NIL	AFIS SANTO ÂNGELO 131.65	GNDC NIL
N/A	FINAL CRS 116°	FAF 2660'	LNAV/VNAV DA / (OCH): 1316' / (300')
			LNAV MDA / (OCH): 1400' / (380')

APCH Perdida: Subir para **4000'** no rumo 116. Ao passar **2000'**, curvar à ESQUERDA direto NM001 para espera.

Missed APCH: Climb to **4000'** on course 116. On passing **2000'**, turn LEFT direct to NM001 for holding.

RMK: 1) Para sistemas não compensados Baro-VNAV, LNAV/VNAV não autorizado abaixo de -10 °C.

1) For uncompensated systems Baro-VNAV, LNAV/VNAV not authorized below -10 °C.



TO THR 11 (NM)	10.0	5.0	2.1	1.0	0.8	0.0	
	NM002	4.0	3.0	2.0	1.0	RWY11	
	2660	2345	2027	1708	1400	ALT	
	1639	1324	1006	687	380	(HGT)	
	KT	090	110	130	150	170	190
	FPM	500	600	700	800	NA	NA
	FAF-MAPT	NA					

STRAIGHT-IN	CAT	A	B	C	D	E
	DA / (OCH)	1316' / (300')				NA
LNAV/VNAV	ALS/NO ALS/RVR ALS (m)	NIL / 1600 / NIL				
	MDA / (OCH)	1400' / (380')				
LNAV	ALS/NO ALS/RVR ALS (m)	NIL / 1600 / NIL		NIL / 1700 / NIL		
	CIRCLING	MDA / (OCH)	NA			
	VIS (m)					

CHANGES: PROC.