

INSTRUMENT APPROACH
CHART (IAC)

PONTA PORÃ / Ponta Porã, INTL (SBPP)

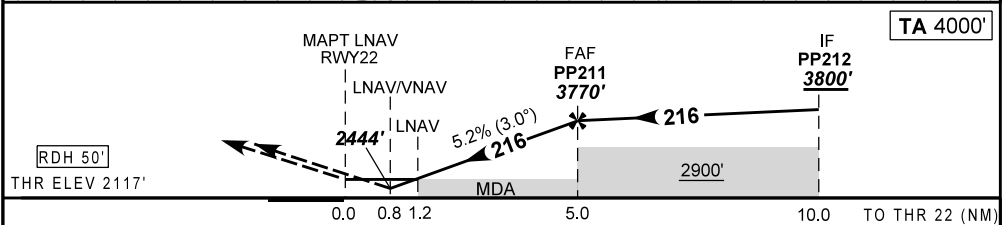
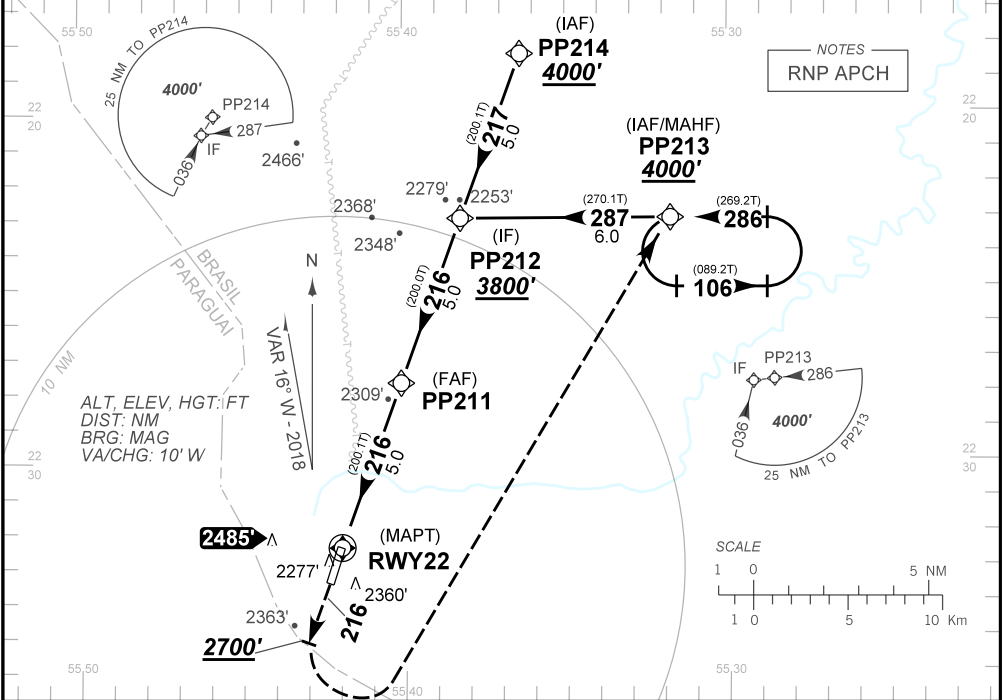
AD ELEV: 2156'

RNAV (GNSS) RWY 22

ATIS NIL	APP NIL	AFIS PONTA PORÃ 125.90	GNDC NIL
N/A	FINAL CRS 216°	FAF 3770'	LNAV MDA / (OCH): 2560' / (440')

APCH Perdida: Subir para **4000'**. Manter rumo **216** até cruzar **2700'**. Curvar à ESQUERDA direto PP213 para espera
Missed APCH: Climb to **4000'**. Maintain course **216** until passing **2700'**. Turn LEFT direct to PP213 for holding.

RMK: Para sistemas não compensados Baro-VNAV, LNAV/VNAV NÃO AUTORIZADO abaixo de -10°C ou acima de 53°C.
For uncompensated systems Baro-VNAV, LNAV/VNAV NOT AUTHORIZED below -10°C or above 53°C.



RWY22	1.2	2.2	3.0	4.0	PP211		KT	090	110	130	150	170	190
ALT	2556	2810	3129	3447	3770		FPM	470	570	670	770	880	NA
(HGT)	439	693	1012	1330	1653		FAF-MAPT	NA					

STRAIGHT-IN	CAT	A	B	C	D	E
LNAV/VNAV	DA / (OCH)	2444' / (330')				NA
	ALS/NO ALS/ RVR ALS (m)	NIL / 1500 / NIL				
LNAV	MDA / (OCH)	2560' / (450')				
	ALS/NO ALS/ RVR ALS (m)	NIL / 1600 / NIL		NIL / 2000 / NIL		
CIRCLING	MDA / (OCH)	NA				
	VIS (m)	NA				

CHANGES: FREQ. PROC. DEC.