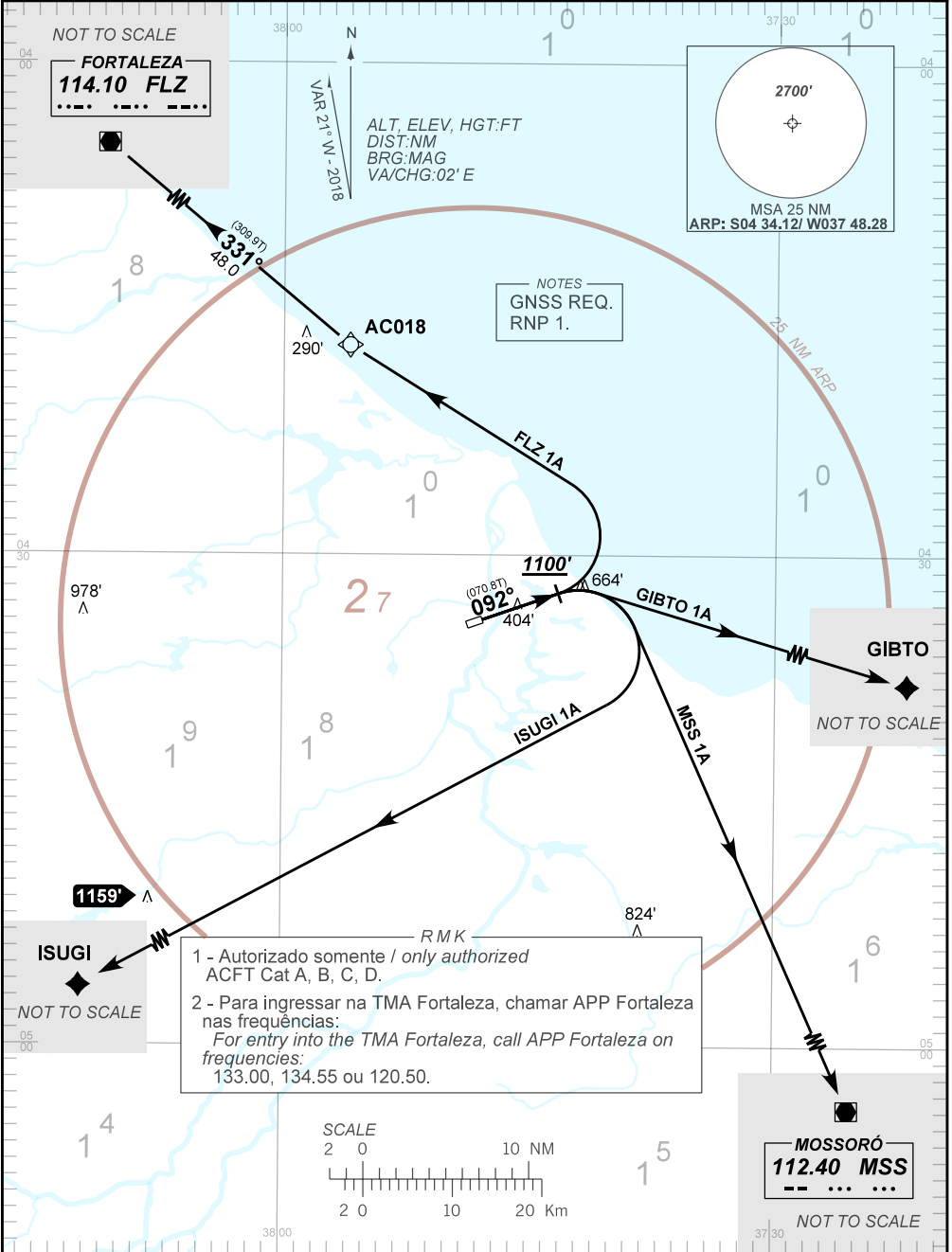


AD ELEV: 117'

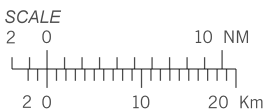
RNAV FLZ 1A - GIBTO 1A - ISUGI 1A - MSS 1A

TA 3000'	AFIS ARACATI 131.25	APP NIL	ACC RECIFE 125.15 135.25 126.35 133.50 128.05 135.80
----------	------------------------	------------	--



NOTES
GNSS REQ.
RNP 1.

RMK
1 - Autorizado somente / only authorized
ACFT Cat A, B, C, D.
2 - Para ingressar na TMA Fortaleza, chamar APP Fortaleza nas frequências:
For entry into the TMA Fortaleza, call APP Fortaleza on frequencies:
133.00, 134.55 ou 120.50.



CHANGES: NEW CHART.