

INSTRUMENT APPROACH  
CHART (IAC)

Vitória da Conquista / Glauber de Andrade Rocha (SSVC)

RNAV(GNSS) RWY 15

AD ELEV: 2934'

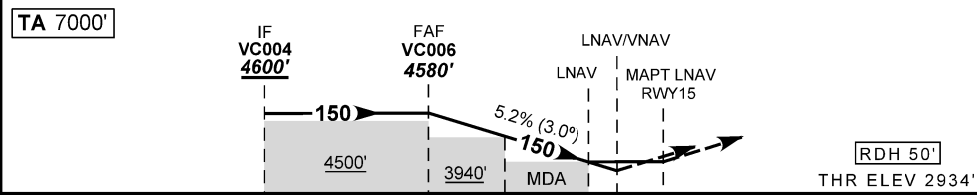
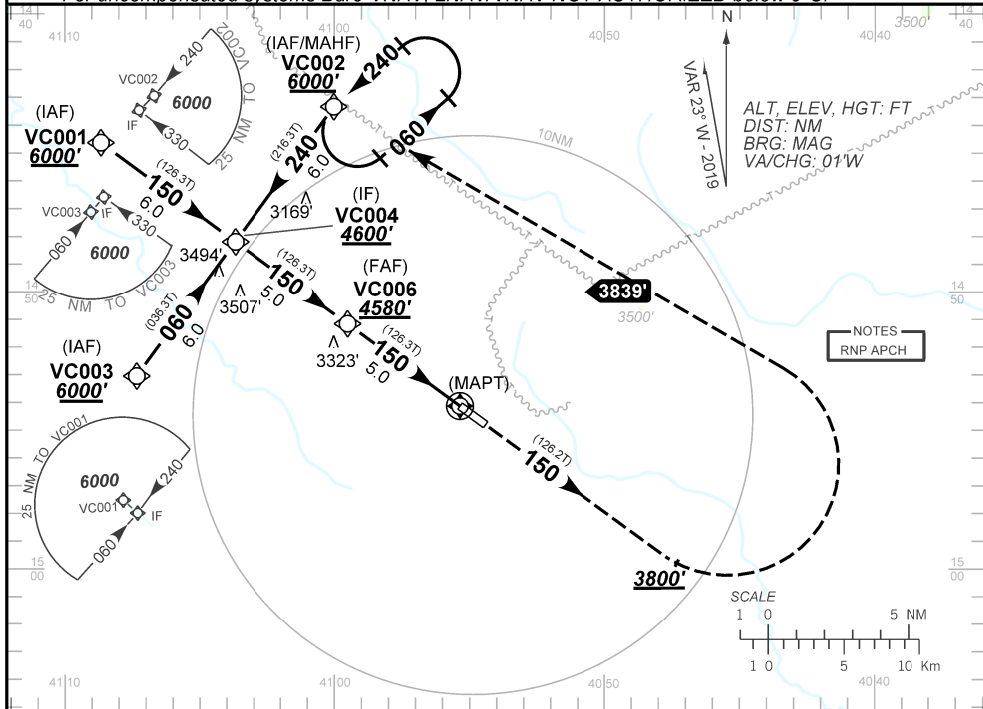
ATIS NIL	APP NIL	AFIS CONQUISTA 130.30	GNDC NIL
N/A	FINAL CRS 150°	FAF 4580'	LNAV MDA / (OCH): 3244' (310')
		LNAV/VNAV DA / (OCH): 3184' / (250')	

APCH Perdida: Subir para **6000'** no rumo **150°**. Após **8300'**, curvar à ESQUERDA direto VC002 para espera.

Missed APCH: Climb to **6000'** on course **150°**. After **8300'**, turn LEFT direct to VC002 for holding.

RMK: Para sistemas não compensados Baro-VNAV, LNAV/VNAV NÃO AUTORIZADO abaixo de 0°C.

For uncompensated systems Baro-VNAV, LNAV/VNAV NOT AUTHORIZED below 0°C.



TO THR 15 (NM)	10.0	5.0	3.0	1.3	0.8	0.0
VC006	4.0	3.0	2.0	1.0	RWY15	
4580	4532	3940	3620	3300	ALT	
1646	1598	1006	686	366	(HGT)	
KT	090	110	130	150	170	190
FPM	500	600	700	800	900	NA
FAF-MAPT	NA					

STRAIGHT-IN	CAT	A	B	C	D	E
LNAV/VNAV	DA / OCH	3184' / (250')				
	ALS/NO ALS/ RVR ALS (m)	NIL / 1300 / NIL				
LNAV	MDA / OCH / TETO	3250' / (310')				
	ALS/NO ALS/RVR ALS (m)	NIL / 1400 / NIL				
CIRCLING	MDA / OCH	NA				
	VIS (m)	NA				

CHANGES: NEW CHART.

SUP N152/19 18 JUL 19 TIL 12 SEP 19

DEPARTAMENTO DE CONTROLE DO ESPAÇO AÉREO

SBVC\_IAC\_00C 1/1  
IAC RNAV(GNSS) RWY 15

**INTENCIONALMENTE EM BRANCO**  
INTENTIONALLY LEFT BLANK