

**INSTRUMENT APPROACH
CHART (IAC)**

BRASÍLIA / Pres. Juscelino Kubitschek, INTL (SBBR)

AD ELEV: 3498'

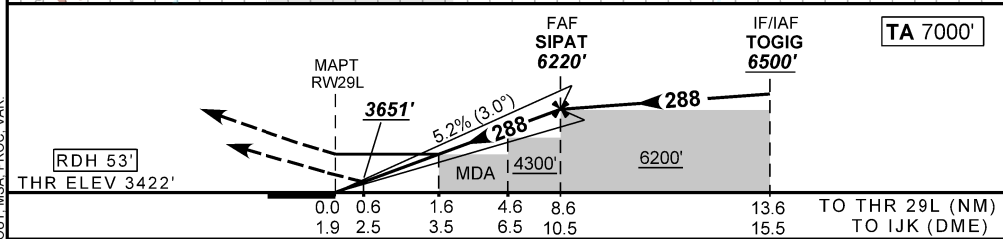
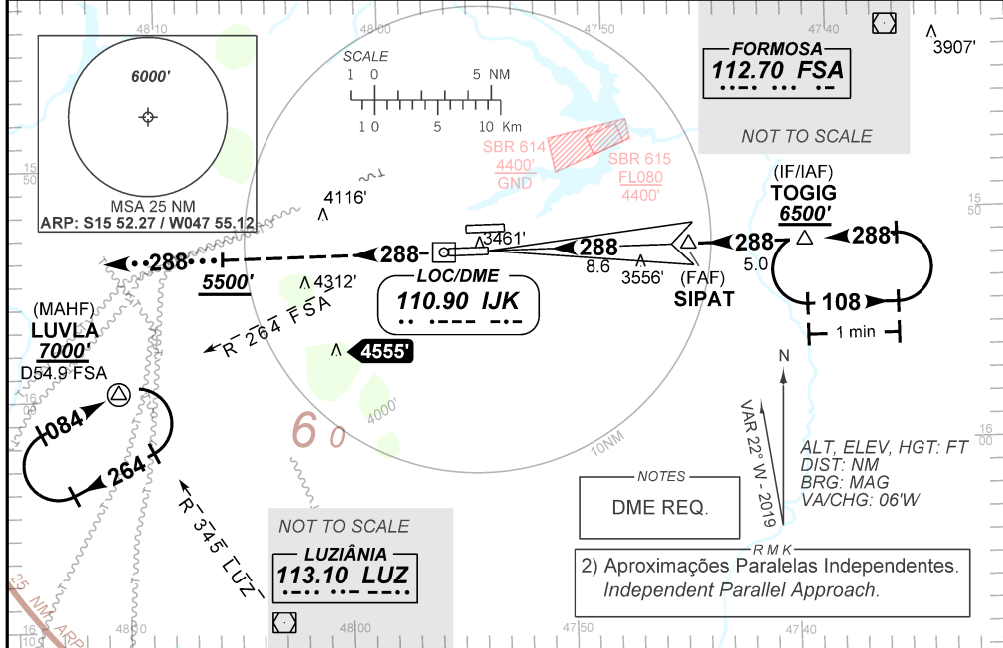
ILS X or LOC X RWY 29L

D-ATIS 127.80	APP BRASÍLIA 129.15 129.60 119.50 121.50	TWR BRASÍLIA 118.10 118.45 118.75 121.50	GNDC BRASÍLIA 121.80 121.95
-------------------------	--	--	---------------------------------------

LOC IJK 110.90 MHz	FINAL CRS 288°	FAF: 6220'	CAT I DA / (OCH): 3651' / (230')	LOC Only MDA / (OCH): 3990' / (570')
------------------------------	--------------------------	----------------------	--	--

APCH Perdida: Subir para **7000'**. Manter proa **288** até **5500'**. Aguardar vetoração radar para interceptar RDL **345** do VOR LUZ para espera em LUVLA.
 Missed APCH: Climb to **7000'**. Maintain **288** heading up to **5500'**. Wait for radar vectoring to intercept **345** RDL LUZ VOR for holding on LUVLA.

RMK: 1) (*) VIS RVR ALS 550m para APCH utilizando Diretor de Voo, Piloto Automático ou Head-Up (HUD).
 (*) VIS RVR ALS 550m for approach using a Flight Director, Autopilot or Head-Up Display (HUD).



RWY29L	1.6	2.0	3.0	4.0	5.0	SIPAT	KT	090	110	130	150	170	190
ALT	3990	4112	4430	4748	5067	6220	FPM	500	600	700	800	900	1000
(HGT)	570	690	1003	1326	1645	2798	FAF-MAPT	NA					

STRAIGHT-IN	CAT	A	B	C	D	E
	DA / (OCH)	3651' / (230')				
CAT I	ALS/NO ALS/ RVR ALS (m)	800 / 1200 / 700 (*)				
	MDA / (OCH)	3990' / (570')				
LOC	ALS/NO ALS/ RVR ALS (m)	750 / 1600 / NIL	800 / 1600 / NIL	1900 / 2600 / NIL		
	MDA / (OCH)	NA				
CIRCLING	MDA / (OCH)	NA				
	VIS (m)	NA				

CHANGES: ADEL DA FREO, IDENT, LAYOUT, MSA, PROC, VAR



CODING TABLE

IAC ILS X or LOC X RWY 29L					BRASÍLIA / Pres. Juscelino Kubitschek, INTL (SBBR)						SBBR_IAC_02N	SUP/SUPP AIP N201/A108 12 SEP 19 TIL 18 JUN 20			
Seq Num	Transition Identifier	Fly Over	Rec Navaid	Fix Ident	Path and Terminator	Course Angle	Turn	Upper Limit Altitude (FT)	Lower Limit Altitude (FT)	Speed Limit (KT)	Speed Limit Description	TM DST (NM)	VA (°)	Role of the Fix	Navigation Specification
10	APCH	N/A	N/A	TOGIG	IF	N/A	N/A	N/A	+6500.00	N/A	N/A	N/A	N/A	IF IAF	N/A
20	APCH	N/A	IJK	TOGIG	HM	287.96° Mag 266.16° True	L	N/A	+6500.00	N/A	N/A	1.00 min	N/A	OTHER	N/A
30	APCH	N/A	IJK	TOGIG	CF	287.96° Mag 266.16° True	N/A	N/A	+6500.00	N/A	N/A	N/A	N/A	IF IAF	N/A
10	FINAL	N/A	N/A	TOGIG	IF	N/A	N/A	N/A	+6500.00	N/A	N/A	N/A	N/A	IF IAF	N/A
20	FINAL	N/A	IJK	SIPAT	CF	287.96° Mag 266.16° True	N/A	N/A	R6220.00	N/A	N/A	5.00	N/A	FAF	N/A
30	FINAL	N/A	IJK	IJK01	CF	287.95° Mag 266.18° True	N/A	N/A	+4942.36	N/A	N/A	4.03	-3.00	SDF	N/A
40	FINAL	N/A	IJK	RW29L	CF	287.94° Mag 266.20° True	N/A	N/A	@3472.05	N/A	N/A	4.62	-3.00	LTP	N/A
10	MA	N/A	N/A	N/A	VA	287.94° Mag 266.22° True	N/A	N/A	+5500.00	N/A	N/A	N/A	N/A	N/A	N/A
20	MA	N/A	N/A	N/A	VM	287.94° Mag 266.22° True	N/A	N/A	N/A	N/A	N/A	N/A	N/A	N/A	N/A
30	MA	N/A	FSA	LUVLA	HM	83.50° Mag 61.86° True	R	N/A	+7000.00	N/A	N/A	1.00 min	N/A	MAHF	N/A

Ident	Latitude / Longitude (WGS84) DD:MM:SS.SS
LUZ	S 16:15:39.00W 47:58:15.60
FSA	S 15:33:20.52W 47:20:48.36
RW29L	S 15:52:43.62W 47:54:38.33
LUVLA	S 15:59:26.73W 48:10:58.58
TOGIG	S 15:51:48.66W 47:40:30.82
SIPAT	S 15:52:08.91W 47:45:41.36
IJK01	S 15:52:25.14W 47:49:51.59

COD	Meaning
+	AT OR ABOVE
-	AT OR BELOW
@	AT
R	RECOMMENDED
B	BETWEEN
=	AS ASSIGNED
SDF	STEPDOWN FIX
Y	YES
N	NO
L	LEFT
R	RIGHT
N/A	NOT APPLICABLE
LTP	LANDING THRESHOLD POINT
FTP	FICTITIOUS THRESHOLD POINT