

**INSTRUMENT APPROACH**

**MANAUS / Ponta Pelada, MIL (SBMN)**

**CHART (IAC)**

**ILS Z or LOC Z RWY 09**

**AD ELEV: 259'**

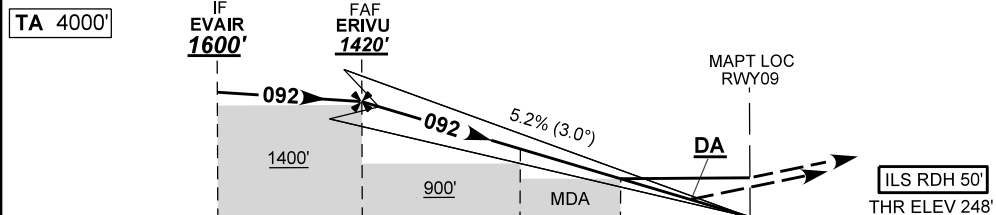
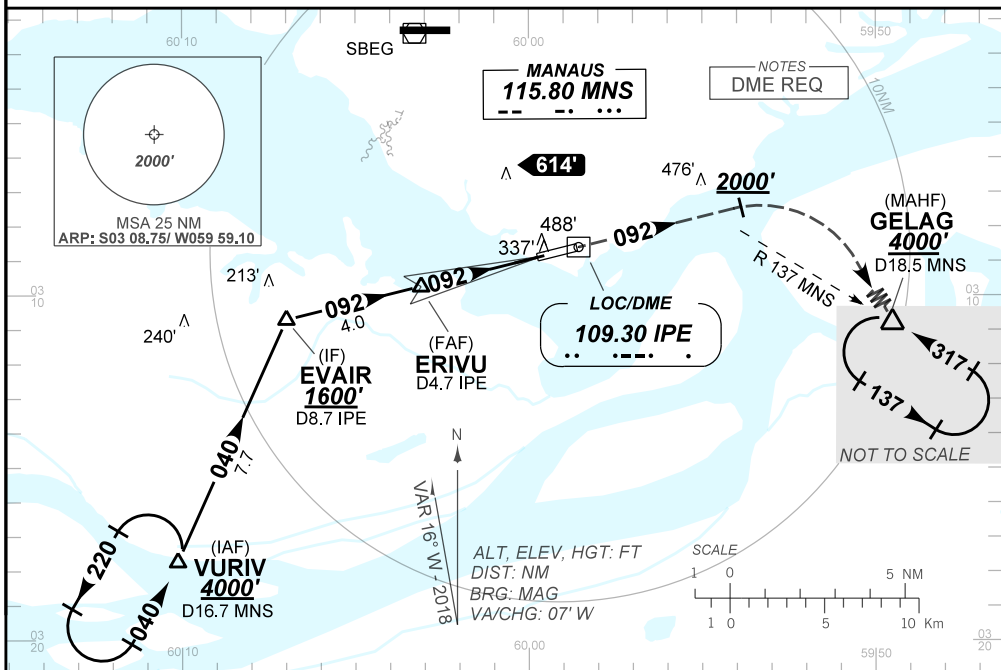
ATIS NIL	APP MANAUS 119.25 119.70 120.40 121.50	TWR MANAUS 118.10	GNDC MANAUS NIL
-------------	---	----------------------	--------------------

LOC IPE 109.30 MHz	FINAL CRS 092°	FAF 1420'	CAT I DA / (OCH): REFER TO MNM	LOC only MDA / (OCH): 720' (480')
-----------------------	-------------------	--------------	-----------------------------------	--------------------------------------

APCH Perdida: 1) Subir para **4000'** com gradiente MNM 4%. Manter rumo **092** até cruzar **2000'**. Então, curvar à DIREITA direto GELAG para espera. 2) IAS MAX 250KT.

Missed APCH: Climb to **4000'** with gradient MNM 4%. Maintain course **092** until passing **2000'**. Then, turn RIGHT direct to GELAG for holding. 2) IAS MAX 250KT.

RMK: NIL



TO THR 09 (NM)	7.5	3.5	2.1	1.3	0.0
TO IPE (DME)	8.7	4.7	3.3	2.5	1.2
	ERIVU 3.0 2.0 1.3	RWY09 ALT (HGT)	KT 090 110 130 150 170 190	FPM 500 600 700 800 900 NA	FAF-MAPT NA
	1420 1253 935	720 472			
	1172 1005 687				

STRAIGHT-IN	CAT	A	B	C	D	E
	DA / (OCH)	448' / (200')			517' / (269')	
CAT I	ALS/NO ALS/RVR ALS (m)	NIL / 1200' / NIL			NIL / 1300' / NIL	
	MDA / (OCH)	720' / (480')				
LOC	ALS/NO ALS/RVR ALS (m)	NIL / 1600' / NIL			NIL / 2200' / NIL	

CHANGES: NEW CHART.

**INTENCIONALMENTE EM BRANCO**  
INTENTIONALLY LEFT BLANK