

STANDARD DEPARTURE CHART
INSTRUMENT (SID)

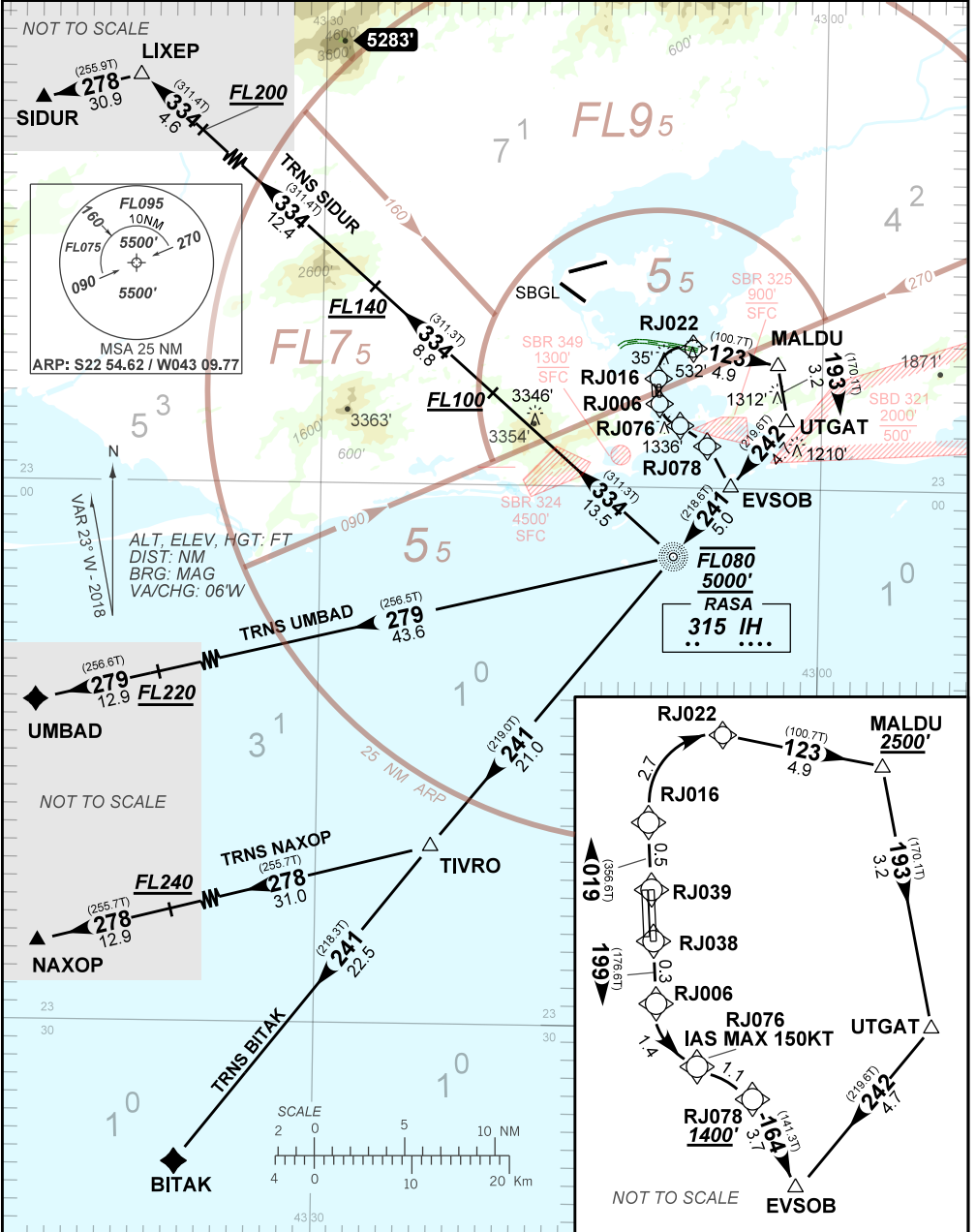
RIO DE JANEIRO / Santos Dumont (SBRJ)

RWY 02R/20L

RNP (AR) EVSOB 1F

AD ELEV: 10'

TA: 7000'	TWR RIO 118.70 121.50	APP RIO 134.40 121.25 121.50	APP SÃO PAULO 119.60 120.45 124.70 125.60 135.25 121.50	ACC CURITIBA 124.00 125.35 128.25 133.40 133.60 121.50
-----------	--------------------------	---------------------------------	---	--



AUTORIZAÇÃO ESPECIAL PARA AERONAVE E TRIPULAÇÃO REQUERIDA

020	COMMON	N	N/A	IH	TF	241.00° Mag 218.60° True	N/A	- FL080	+5000	N/A	N/A	5.00	N/A	N/A	RNP 1.0
010	ENROUTE	N	N/A	IH	IF	N/A	N/A	- FL080	+5000	N/A	N/A	N/A	N/A	N/A	N/A
020	ENROUTE	N	N/A	TIVRO	TF	241.00° Mag 219.00° True	N/A	N/A	N/A	N/A	N/A	21.00	N/A	N/A	RNP 1.0
030	ENROUTE	N	N/A	BITAK	TF	241.00° Mag 218.30° True	N/A	N/A	N/A	N/A	N/A	22.50	N/A	N/A	RNP 1.0
010	ENROUTE	N	N/A	IH	IF	N/A	N/A	- FL080	+5000	N/A	N/A	N/A	N/A	N/A	N/A
020	ENROUTE	N	N/A	TIVRO	TF	241.00° Mag 219.00° True	N/A	N/A	N/A	N/A	N/A	21.00	N/A	N/A	RNP 1.0
030	ENROUTE	N	N/A	N/A	TF	278.00° Mag 255.70° True	N/A	N/A	+FL240	N/A	N/A	31.00	N/A	(*)	RNP 1.0
040	ENROUTE	N	N/A	NAXOP	TF	278.00° Mag 255.70° True	N/A	N/A	N/A	N/A	N/A	12.90	N/A	N/A	RNP 1.0
010	ENROUTE	N	N/A	IH	IF	N/A	N/A	- FL080	+5000	N/A	N/A	N/A	N/A	N/A	N/A
020	ENROUTE	N	N/A	N/A	TF	279.00° Mag 256.50° True	N/A	N/A	+FL220	N/A	N/A	43.60	N/A	(*)	RNP 1.0
030	ENROUTE	N	N/A	UMBAD	TF	279.00° Mag 256.50° True	N/A	N/A	N/A	N/A	N/A	12.90	N/A	N/A	RNP 1.0
010	ENROUTE	N	N/A	IH	IF	N/A	N/A	- FL080	+5000	N/A	N/A	N/A	N/A	N/A	N/A
020	ENROUTE	N	N/A	N/A	TF	334.00° Mag 311.30° True	N/A	N/A	+FL100	N/A	N/A	13.50	N/A	(*)	RNP 1.0
030	ENROUTE	N	N/A	N/A	TF	334.00° Mag 311.30° True	N/A	N/A	+FL140	N/A	N/A	8.80	N/A	(*)	RNP 1.0
040	ENROUTE	N	N/A	N/A	TF	334.00° Mag 311.40° True	N/A	N/A	+FL200	N/A	N/A	12.40	N/A	(*)	RNP 1.0
050	ENROUTE	N	N/A	LIXEP	TF	334.00° Mag 311.40° True	N/A	N/A	N/A	N/A	N/A	4.60	N/A	N/A	RNP 1.0
060	ENROUTE	N	N/A	SIDUR	TF	278.00° Mag 255.90° True	N/A	N/A	N/A	N/A	N/A	30.90	N/A	N/A	RNP 1.0

(*) Restrição de altitude somente / Altitude restriction only

Ident	Latitude / Longitude (WGS84) DD:MM:SS.SS
RJ038 (THR02R)	S 22:54:59.48W 43:09:44.78
RJ039 (THR20L)	S 22:54:16.55W 43:09:47.56
RJ006	S 22:55:17.51W 43:09:43.61
RJ076	S 22 56 21.22W 43 08 52.00
RJ078	S 22 56 59.34W 43 07 54.26
RJ016	S 22 53 46.51W 43 09 49.51
RJ022	S 22 52 12.37W 43 07 54.06
RJ077	S 22 55 13.19W 43 08 25.76
RJ026	S 22 53 41.10W 43 08 12.21
RJ079	S 22 58 14.61W 43 09 35.75
MALDU	S 22:53:06.92W 43:02:41.50
UTGAT	S 22:56:15.00W 43:02:06.00
EVS0B	S 22:59:54.64W 43:05:22.58
TIVRO	S 23:20:08.73W 43:23:06.88
BITAK	S 23:37:48.60W 43:38:16.80
NAXOP	S 23:30:54.70W 44:09:24.54
UMBAD	S 23:16:55.53W 44:08:29.34
IH	S 23:03:49.80W 43:08:45.60

COD	Meaning
+	AT OR ABOVE
-	AT OR BELOW
@	AT
R	RECOMMENDED
B	BETWEEN
=	AS ASSIGNED
SDF	STEPDOWN FIX
Y	YES
N	NO
L	LEFT
R	RIGHT
N/A	NOT APPLICABLE
LTP	LANDING THRESHOLD POINT
FTP	FICTITIOUS THRESHOLD POINT
*	FICTITIOUS POINT

DER	Latitude / Longitude (WGS84) DD:MM:SS.SS	Elevation (FT)
02R	S 22:54:59.48 W 43:09:44.78	9.51
20L	S 22:54:16.55 W 43:09:47.56	9.19