

**INSTRUMENT APPROACH
CHART (IAC)**

**PORTO ALEGRE / Salgado Filho, INTL (SBPA)
RNAV (GNSS) RWY 28**

AD ELEV: 12'

THR 29 DISPLACED 300m

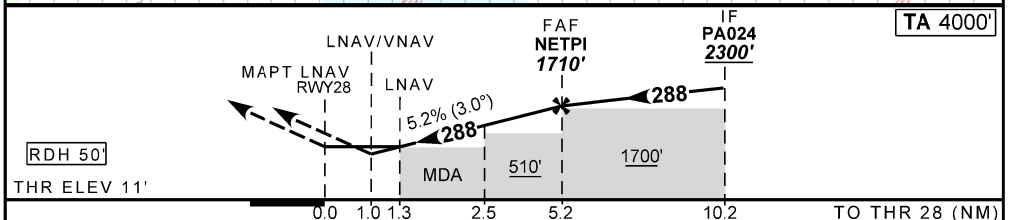
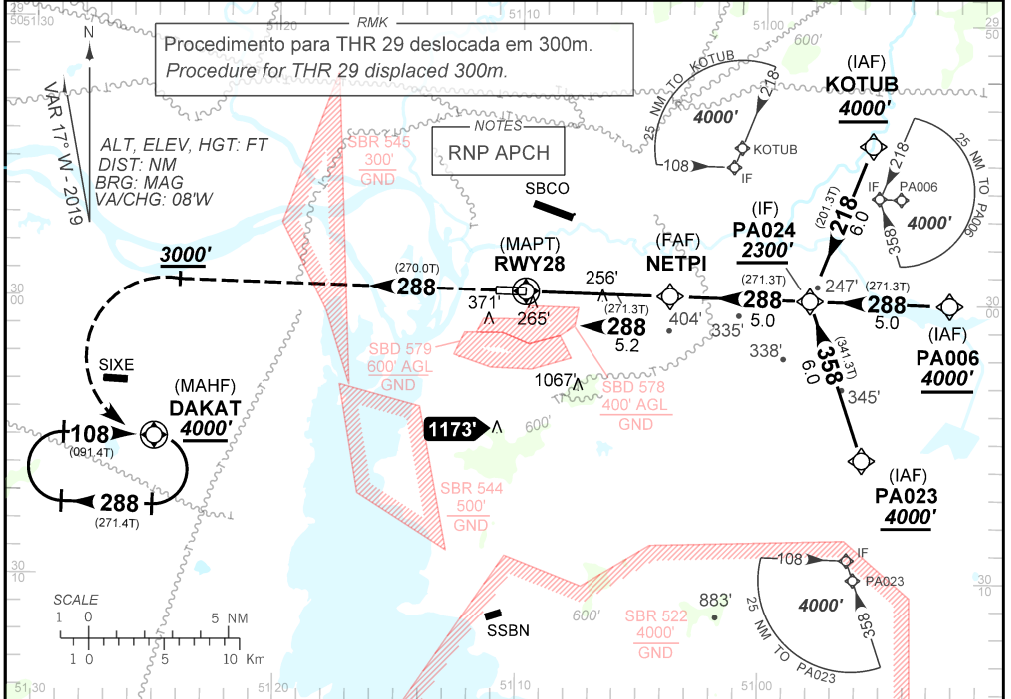
D-ATIS 132.35	APP PORTO ALEGRE 119.00 120.10 120.55 128.90 121.50	TWR PORTO ALEGRE 118.10 121.50	GNDC PORTO ALEGRE 121.90
N/A	FINAL CRS 288°	FAF 1710'	LNAV/VNAV DA / (OCH): 387' / (376')
			LNAV MDA / (OCH): 460' / (450')

APCH Perdida: Subir para **4000'** no rumo **288**. Após **3000'**, curvar a ESQUERDA direto DAKAT para espera.

IAS MAX 230KT.
Missed APCH: Climb to **4000'** on course **288**. After **3000'**, turn LEFT direct to DAKAT for holding.

MAX IAS 230 KT.

RMK: 1) Para sistemas BARO-VNAV não compensados, procedimento LNAV/VNAV não autorizado abaixo de -10°C. 1) For uncompensated systems, LNAV/VNAV procedure not authorized below -10°C.



RWY28	1.3	2.5	3.0	4.0	NETPI						
ALT	460	857	1016	1334	1710						
(HGT)	450	845	1004	1322	1698						

STRAIGHT-IN	CAT	A	B	C	D	E
LNAV/VNAV	DA / (OCH)	387' / (376')				NA
	ALS/NO ALS/ RVR ALS (m)	NIL / 1700 / NIL				
LNAV	MDA / (OCH)	460' / (450')				NA
	ALS/NO ALS/ RVR ALS (m)	NIL / 1600 / NIL		NIL / 2100 / NIL		
CIRCLING	MDA / (OCH)	NA				NA
	VIS (m)					

CHANGES, DEC. MINM



CODING TABLE

IAC RNAV (GNSS) RWY 28 THR 29 DISPLACED				PORTO ALEGRE / Salgado Filho, INTL (SBPA)				SBPA_IAC_01K				02 JAN 20			
Seq Num	Transition Identifier	Fly Over	Rec Navaid	Fix Ident	Path and Terminator	Course Angle	Turn	Upper Limit Altitude	Lower Limit Altitude	Speed Limit	Speed Limit Description	TM DST	VA (°)	Role Of TheFix	Navigation Specification
10	APCH	N/A	N/A	PA023	IF	N/A	N/A	N/A	+4000	N/A	N/A	N/A	N/A	IAF	RNP APCH
20	APCH	N	N/A	PA024	TF	358.27° Mag 341.29° True	N/A	N/A	+2300	N/A	N/A	6.00	N/A	IF	RNP APCH
10	APCH	N/A	N/A	PA006	IF	N/A	N/A	N/A	+4000	N/A	N/A	N/A	N/A	IAF	RNP APCH
20	APCH	N	N/A	PA024	TF	288.26° Mag 271.28° True	N/A	N/A	+2300	N/A	N/A	5.00	N/A	IF	RNP APCH
10	APCH	N/A	N/A	KOTUB	IF	N/A	N/A	N/A	+4000	N/A	N/A	N/A	N/A	IAF	RNP APCH
20	APCH	N	N/A	PA024	TF	218.31° Mag 201.33° True	N/A	N/A	+2300	N/A	N/A	6.00	N/A	IF	RNP APCH
10	FINAL	N/A	N/A	PA024	IF	N/A	N/A	N/A	+2300	N/A	N/A	N/A	N/A	IF	RNP APCH
20	FINAL	N	N/A	NETPI	TF	288.53° Mag 271.28° True	N/A	N/A	R1710	N/A	N/A	5.00	N/A	FAF	RNP APCH
30	FINAL	N	N/A	SDF	TF	288.46° Mag 271.25° True	N/A	N/A	+790	N/A	N/A	2.70	-3.00	SDF	RNP APCH
40	FINAL	Y	N/A	RWY28	TF	288.13° Mag 271.27° True	N/A	N/A	@61.35	N/A	N/A	2.46	-3.00	LTP/FTP	RNP APCH
10	MA	N	N/A	N/A	CA	288.11° Mag 271.44° True	N/A	N/A	+3000	230.00	-	N/A	N/A	OTHER	RNP APCH
20	MA	N	N/A	DAKAT	DF	N/A	L	N/A	+4000	230.00	-	N/A	N/A	MAHF	RNP APCH
30	MA	Y	N/A	DAKAT	HM	108.00° Mag 91.02° True	R	N/A	+4000	230.00	-	N/A	N/A	MAHF	RNP APCH

Ident	Latitude / Longitude (WGS84) DD:MM:SS.SS
PA023	S 30:05:36.60W 50:55:49.80
PA024	S 29:59:54.60W 50:58:03.00
PA006	S 30:00:01.20W 50:52:17.40
KOTUB	S 29:54:18.60W 50:55:32.40
DAKAT	S 30:05:01.80W 51:25:00.60
NETPI	S 29:59:48.00W 51:03:48.60
SDF	S 29:59:44.50W 51:06:54.91
RWY28 THR 29 DISPLACED	S 29:59:41.24W 51:09:44.99

COD	Meaning
+	AT OR ABOVE
-	AT OR BELOW
@	AT
R	RECOMMENDED
B	BETWEEN
=	AS ASSIGNED
SDF	STEPDOWN FIX
Y	YES
N	NO
L	LEFT
R	RIGHT
N/A	NOT APPLICABLE
LTP	LANDING THRESHOLD POINT
FTP	FICTITIOUS THRESHOLD POINT