

**INSTRUMENT APPROACH  
CHART (IAC)**

**GUARAPUAVA / Tancredo Thomas de Faria (SSGG)**

**AD ELEV: 3494'**

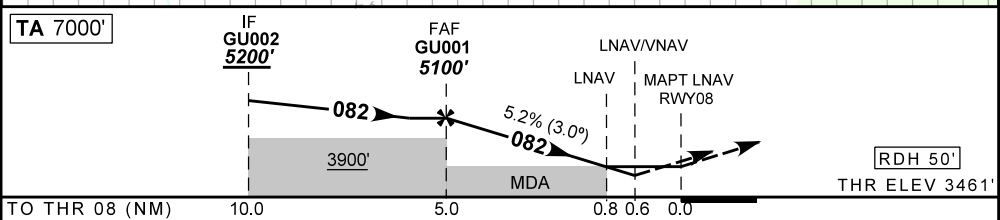
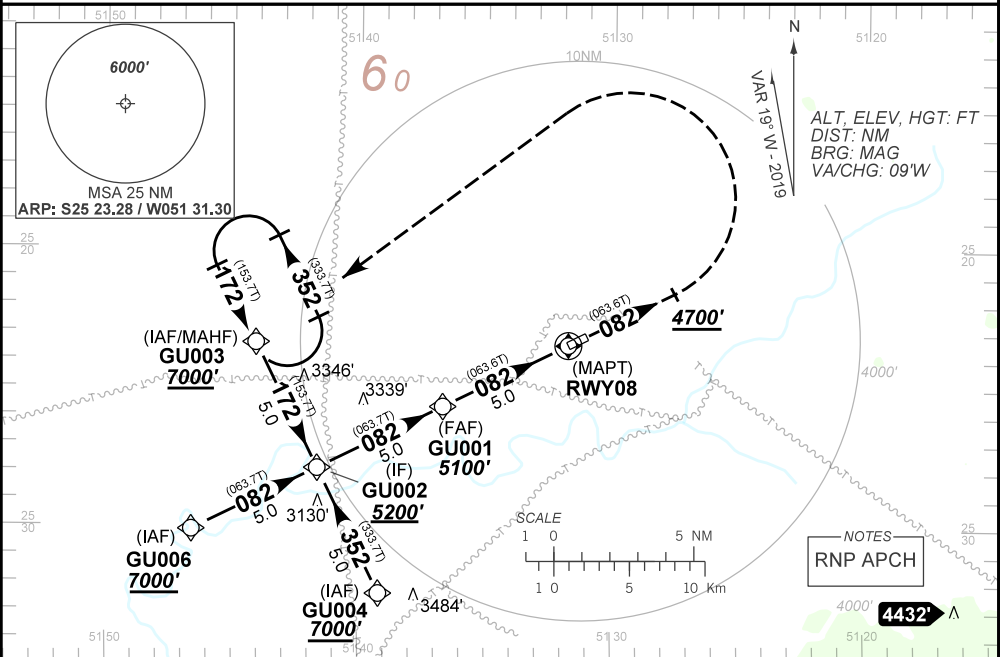
**RNAV(GNSS) RWY 08**

ATIS <b>NIL</b>	APP <b>NIL</b>	AFIS GUARAPUAVA <b>131.70</b>	GNDC <b>NIL</b>
<b>N/A</b>	FINAL CRS <b>082°</b>	FAF: <b>5100'</b>	LNAV <b>NIL</b>
		LNAV/VNAV DA / (OCH): <b>3711' / (250')</b>	MDA / (OCH): <b>3780' / (320')</b>

APCH Perdida: Subir para **7000'** no rumo **082**, após **4700'**, curvar à ESQUERDA direto GU003 para espera .  
 Missed APCH: Climb to **7000'** on course **082**, until **4700'**, turn **LEFT** direct **GU003** for holding.

RMK: 1) Para sistema BARO-VNAV não compensados, procedimento LNAV/VNAV não autorizado abaixo de -10°C.

1) For uncompensated systems BARO-VNAV, LNAV/VNAV procedure not authorized below -10°C.



GU001	4.0	3.0	2.0	0.8	RWY08	KT	090	110	130	150	170	190
5100	4785	4466	4148	3780	ALT	FPM	500	600	700	800	NA	NA
1639	1324	1005	687	319	(HGT)	FAF-MAPT	NA					

STRAIGHT-IN	CAT	A	B	C	D	E
LNAV/VNAV	DA / (OCH)	3711' / (250')			NA	
	ALS/NO ALS/ RVR ALS (m)	NIL / 1300 / NIL				
LNAV	MDA / (OCH)	3780' / (320')				
	ALS/NO ALS/ RVR ALS (m)	NIL / 1400 / NIL				
CIRCLING	MDA / (OCH)	NA				
	VIS (m)					

CHANGES: NEW CHART.

SUP N037/20 30 JAN 20 TIL 26 MAR 20

DEPARTAMENTO DE CONTROLE DO ESPAÇO AÉREO

**SBGU\_IAC\_00G 1/1  
RNAV(GNSS) RWY 08**



## CODING TABLE

IAC RNAV (GNSS) RWY 08					GUARAPUAVA / Tancredo Thomas de Faria (SBGU)							SBGU_IAC_00G		2004A1 26 MAR 20	
Seq Num	Transition Identifier	Fly Over	Rec Navaid	Fix Ident	Path and Terminator	Course Angle	Turn	Upper Limit Altitude (FT)	Lower Limit Altitude (FT)	Speed Limit (KT)	Speed Limit Description	TM DST	VA (°)	Role of the Fix	Navigation Specification
10	APCH	N/A	N/A	GU003	IF	N/A	N/A	N/A	+7000.00	N/A	N/A	N/A	N/A	IAF	RNP APCH
20	APCH	N	N/A	GU002	TF	172.18° Mag 153.69° True	N/A	N/A	+5200.00	N/A	N/A	5.00	N/A	IF	RNP APCH
10	APCH	N/A	N/A	GU004	IF	N/A	N/A	N/A	+7000.00	N/A	N/A	N/A	N/A	IAF	RNP APCH
20	APCH	N	N/A	GU002	TF	352.18° Mag 333.69° True	N/A	N/A	+5200.00	N/A	N/A	5.00	N/A	IF	RNP APCH
10	APCH	N/A	N/A	GU006	IF	N/A	N/A	N/A	+7000.00	N/A	N/A	N/A	N/A	IAF	RNP APCH
20	APCH	N	N/A	GU002	TF	82.18° Mag 63.69° True	N/A	N/A	+5200.00	N/A	N/A	5.00	N/A	IF	RNP APCH
10	Final	N/A	N/A	GU002	IF	N/A	N/A	N/A	+5200.00	N/A	N/A	N/A	N/A	IF	RNP APCH
20	Final	N	N/A	GU001	TF	82.20° Mag 63.66° True	N/A	N/A	R5100.00	N/A	N/A	5.00	N/A	FAF	RNP APCH
30	Final	Y	N/A	RWY08	TF	82.23° Mag 63.62° True	N/A	N/A	@3511.29	N/A	N/A	4.99	-3.00	LTP/FTP	RNP APCH
10	MisAp	N/A	N/A	N/A	CA	82.17° Mag 63.56° True	N/A	N/A	+4700.00	N/A	N/A	N/A	N/A		RNP APCH
20	MisAp	Y	N/A	GU003	DF	N/A	L	N/A	+7000.00	N/A	N/A	N/A	N/A	OTHER	RNP APCH
30	MisAp	Y	N/A	GU003	HM	172.17° Mag 153.69° True	L	N/A	+7000.00	N/A	N/A	1.00 min	N/A	OTHER	RNP APCH

Ident	Latitude / Longitude (WGS84) DD:MM:SS.SS
GU003	S 25:23:24.93W 51:44:06.33
GU002	S 25:27:54.71W 51:41:39.52
GU004	S 25:32:24.45W 51:39:12.53
GU001	S 25:25:41.27W 51:36:42.45
RWY08	S 25:23:27.98W 51:31:46.28
GU006	S 25:30:07.98W 51:46:36.76

COD	Meaning
+	AT OR ABOVE
-	AT OR BELOW
@	AT
R	RECOMMENDED
B	BETWEEN
=	AS ASSIGNED
SDF	STEPDOWN FIX
Y	YES
N	NO
L	LEFT
R	RIGHT
N/A	NOT APPLICABLE
LTP	LANDING THRESHOLD POINT
FTP	FICTITIOUS THRESHOLD POINT