

**INSTRUMENT APPROACH
CHART (IAC)**

RIO DE JANEIRO / Galeão - Antônio Carlos Jobim, INTL (SBGL)

RNAV (GNSS) U RWY 14

AD ELEV: 28'

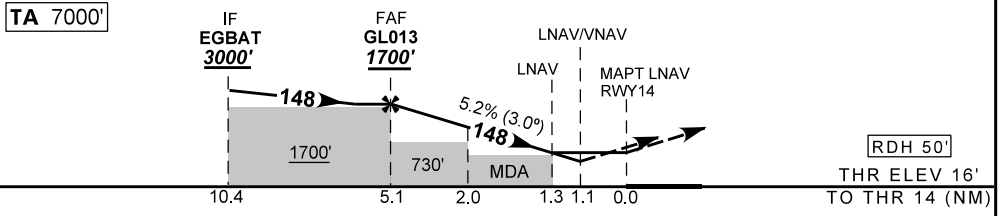
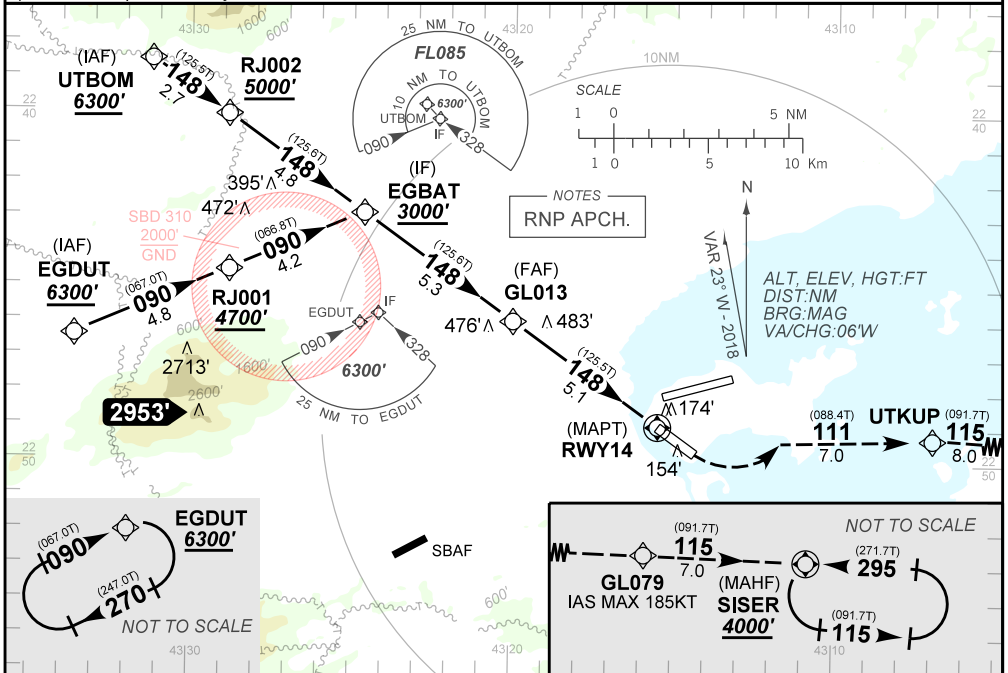
D-ATIS 127.60	APP RIO 126.20 133.30 134.40 121.25 129.80 125.95 128.90 119.35 121.50	TWR GALEÃO 118.00 118.20 121.50	GNDC GALEÃO 128.35 121.65
-------------------------	--------------------------------------------------------------------------------------	-------------------------------------------	-------------------------------------

N/A	FINAL CRS 148°	FAF 1700'	LNAV/VNAV DA / (OCH): 335' / (320')	LNAV MDA / (OCH): 420' (410')
-----	--------------------------	---------------------	-----------------------------------------------	-----------------------------------------

APCH Perdida: 1) Subir para **4000'**. Curvar à **ESQUERDA** rumo **111°** até UTKUP. Curvar à **DIREITA** rumo **115°** até GL079. Manter rumo **115°** até SISER para espera.

Missed APCH: 1) Climb to **4000'**. Turn **LEFT** course **111°** up to UTKUP. Turn **RIGHT** course **115°** up to GL079. Maintain course **115°** up to SISER for holding.

RMK: 1) Para sistemas não compensados BARO-VNAV, LNAV/VNAV NÃO AUTORIZADO abaixo de 0°C ou acima de 42°C.
1) For uncompensated systems BARO-VNAV, LNAV/VNAV NOT AUTHORIZED below 0°C or above 42°C.



GL013	4.0	3.0	2.0	1.3	RWY14	KT	090	110	130	150	170	190
1700	1341	1023	704	420	ALT	FPM	500	600	700	800	900	NA
1684	1325	1007	688	404	(HGT)	FAF-MAPT	NA					

STRAIGHT-IN	CAT	A	B	C	D	E
	DA / (OCH)	335' / (320')				
LNAV/VNAV	ALS/NO ALS/ RVR ALS (m)	800/ 1600 / 700				
	MDA / (OCH)	420' / (410')				
LNAV	ALS/NO ALS/ RVR ALS (m)	800/ 1600 / 700				
	MDA / (OCH)	1200 / 1900 / 1100				
CIRCLING	MDA / (OCH)	NA				
	VIS (m)	NA				

CHANGES: NEW CHART.

INTENCIONALMENTE EM BRANCO
INTENTIONALLY LEFT BLANK