

**INSTRUMENT APPROACH
CHART (IAC)**

PONTA GROSSA / Comandante Antônio Amilton Beraldo (SBPG)

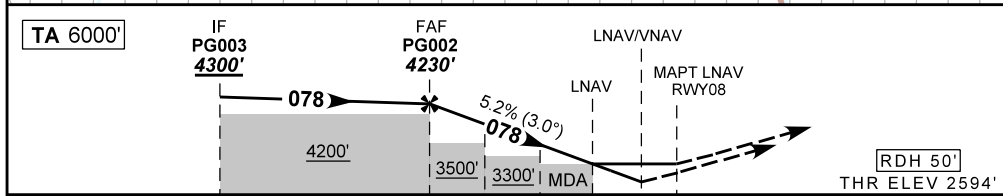
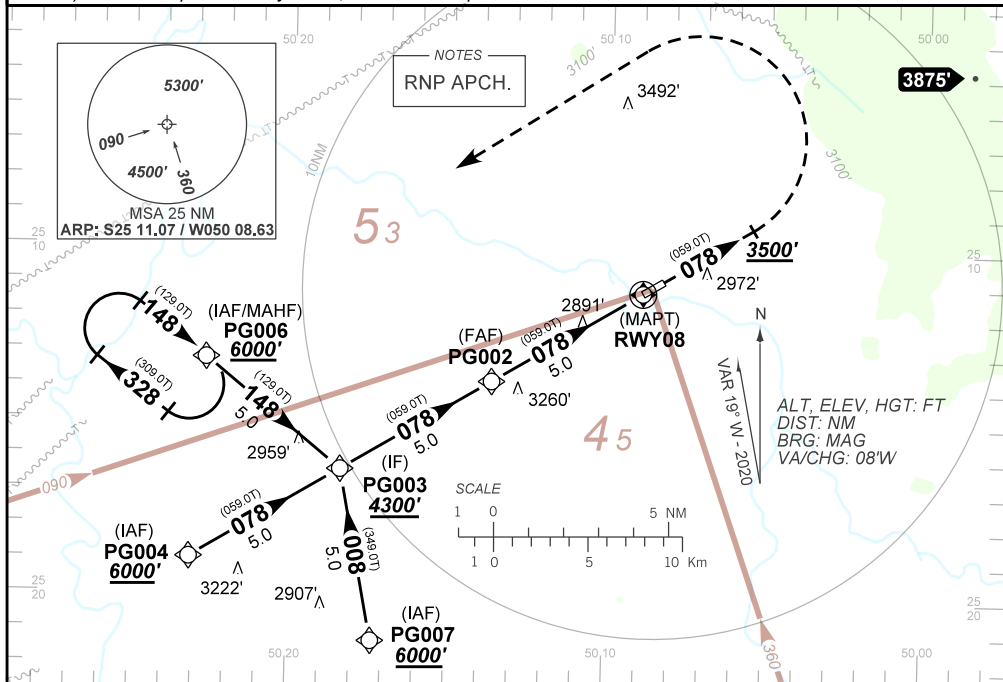
RNAV(GNSS) RWY 08

AD ELEV: 2594'

ATIS NIL	ACC CURITIBA 125.80 127.20 132.45		AFIS PONTA GROSSA 128.10		GNDC NIL
N/A	FINAL CRS 078°	FAF: 4230'	LNAV/VNAV DA / (OCH): 2930' / (336')		LNAV MDA / (OCH): 3140' / (550')

APCH Perdida: Subir para **6000'**. Manter rumo **078** até **3500'**. Curvar à ESQUERDA direto PG006 para espera.
Missed APCH: Climb up to **6000'**. Maintain course **078** up to **3500'**. Turn LEFT direct to PG006 for holding.

RMK: 1) Para sistemas não compensados, LNAV/VNAV não autorizado abaixo de -10°C e acima de 55°C.
1) For uncompensated systems, LNAV/VNAV procedure not authorized below -10°C and above 55°C.



TO THR 08 (NM) 10.0 5.0 3.5 2.3 1.6 0.9 0.0

	5.0	4.0	3.0	2.0	1.6	RWY08	KT	090	110	130	150	170	190
	4230	3918	3600	3281	3140	ALT	FPM	500	600	700	800	NA	NA
	1636	1324	1006	687	550	(HGT)	FAF-MAPT	NA					

STRAIGHT-IN	CAT	A	B	C	D	E
	DA / (OCH)	2930' / (336')				
LNAV/VNAV	ALS/NO ALS/ RVR ALS (m)	NIL / 1500 / NIL			NA	
	MDA / (OCH)	3140' / (550')				
LNAV	ALS/NO ALS/ RVR ALS (m)	NIL / 1600 / NIL		NIL / 2500 / NIL		
	MDA / (OCH)	NA				
CIRCLING	MDA / (OCH)	NA				
	VIS (m)	NA				

CHANGES: NEW CHART.



CODING TABLE

IAC RNAV(GNSS) RWY 08					PONTA GROSSA / Comandante Antônio Amilton Beraldo (SBPG)							SBPG_IAC_00A	SUP AIP N030 30 JAN 20 TIL 21 MAY 20			
Seq Num	Transition Identifier	Fly Over	Rec Navaid	Fix Ident	Path and Terminator	Course Angle	Turn	Upper Limit Altitude (FT)	Lower Limit Altitude (FT)	Speed Limit (KT)	Speed Limit Description	TM DST (NM)	VA (°)	Role of the Fix	Navigation Specification	
10	APCH	N/A	N/A	PG004	IF	N/A	N/A	N/A	+6000.00	N/A	N/A	N/A	N/A	IAF	RNP APCH	
20	APCH	N	N/A	PG003	TF	78.38° Mag 59.02° True	N/A	N/A	+4300.00	N/A	N/A	5.00	N/A	IF	RNP APCH	
10	APCH	N/A	N/A	PG007	IF	N/A	N/A	N/A	+6000.00	N/A	N/A	N/A	N/A	IAF	RNP APCH	
20	APCH	N	N/A	PG003	TF	8.38° Mag 349.02° True	N/A	N/A	+4300.00	N/A	N/A	5.00	N/A	IF	RNP APCH	
10	APCH	N/A	N/A	PG006	IF	N/A	N/A	N/A	+6000.00	N/A	N/A	N/A	N/A	IAF	RNP APCH	
20	APCH	N	N/A	PG003	TF	148.38° Mag 129.02° True	N/A	N/A	+4300.00	N/A	N/A	5.00	N/A	IF	RNP APCH	
10	FINAL	N/A	N/A	PG003	IF	N/A	N/A	N/A	+4300.00	N/A	N/A	N/A	N/A	IF	RNP APCH	
20	FINAL	N	N/A	PG002	TF	78.40° Mag 58.99° True	N/A	N/A	R4230.00	N/A	N/A	5.00	N/A	FAF	RNP APCH	
30	FINAL	N	N/A	PG008	TF	78.41° Mag 58.98° True	N/A	N/A	+3764.92	N/A	N/A	1.48	-3.00	SDF	RNP APCH	
40	FINAL	N	N/A	PG009	TF	78.41° Mag 58.97° True	N/A	N/A	+3366.15	N/A	N/A	1.25	-3.00	SDF	RNP APCH	
50	FINAL	Y	N/A	RWY08	TF	78.42° Mag 58.95° True	N/A	N/A	@2643.90	N/A	N/A	2.27	-3.00	LTP	RNP APCH	
10	MA	N/A	N/A	N/A	VA	78.42° Mag 58.94° True	N/A	N/A	+3500.00	N/A	N/A	N/A	N/A	N/A	RNP APCH	
20	MA	N	N/A	PG006	DF	N/A	L	N/A	+6000.00	N/A	N/A	N/A	N/A	MAHF	RNP APCH	
30	MA	N	N/A	PG006	HM	148.38° Mag 129.04° True	R	N/A	+6000.00	N/A	N/A	1.00 min	N/A	MAHF	RNP APCH	

Ident	Latitude / Longitude (WGS84) DD:MM:SS.SS
PG003	S 25:16:23.51W 50:18:22.00
PG002	S 25:13:48.53W 50:13:38.35
PG008	S 25:13:02.62W 50:12:14.43
PG009	S 25:12:23.78W 50:11:03.44
RWY08	S 25:11:13.40W 50:08:54.91
PG004	S 25:18:58.33W 50:23:05.84
PG007	S 25:21:18.92W 50:17:18.92
PG006	S 25:13:13.98W 50:22:39.02

COD	Meaning
+	AT OR ABOVE
-	AT OR BELOW
@	AT
R	RECOMMENDED
B	BETWEEN
=	AS ASSIGNED
SDF	STEPDOWN FIX
Y	YES
N	NO
L	LEFT
R	RIGHT
N/A	NOT APPLICABLE
LTP	LANDING THRESHOLD POINT
FTP	FICTITIOUS THRESHOLD POINT