

**INSTRUMENT APPROACH
CHART (IAC)**

BRASÍLIA / Pres. Juscelino Kubitschek, INTL (SBBR)

AD ELEV: 3498'

ILS Z RWY 29L

D-ATIS 127.80	APP BRASÍLIA 129.15 129.60 119.50 121.50	TWR BRASÍLIA 118.10 118.45 118.75 121.50	GNDC BRASÍLIA 121.80 121.95
-------------------------	--	--	---------------------------------------

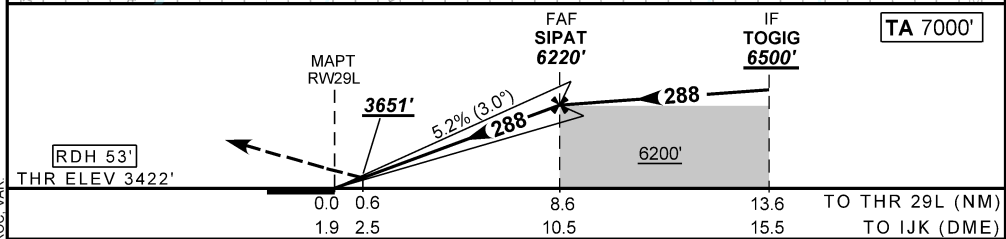
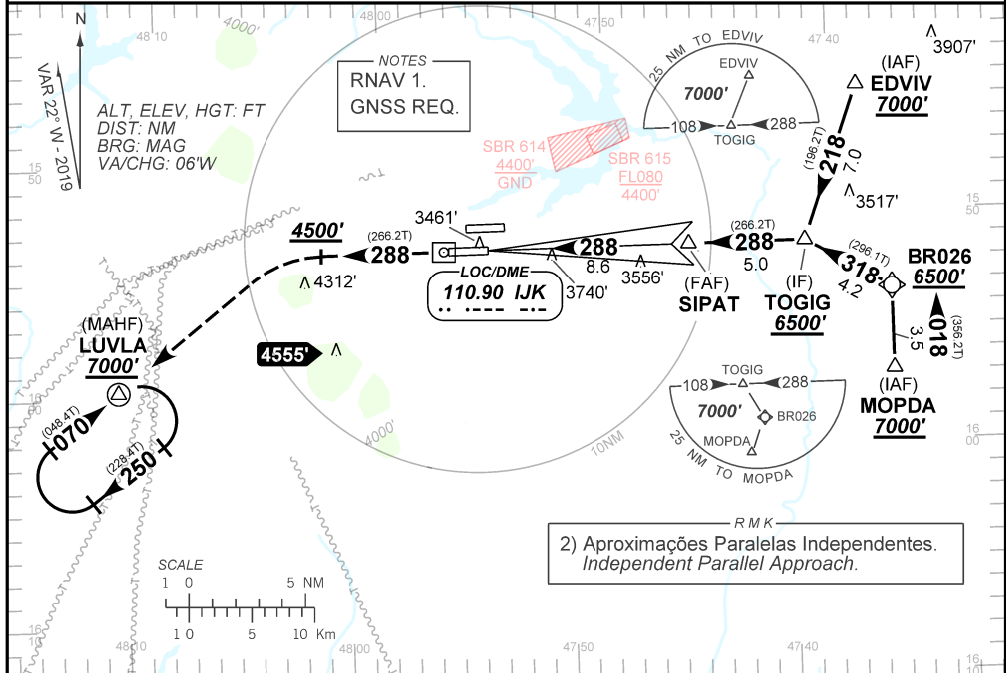
LOC IJK 110.90 MHz	FINAL CRS 288°	FAF: 6220'	CAT I DA / (OCH): 3651' / (230')	N/A
------------------------------	--------------------------	----------------------	--	-----

APCH Perdida: Subir para **7000'**. Manter proa **288** até **4500'**. Curvar à ESQUERDA direto LUVLA para espera.

Missed APCH: Climb to **7000'**. Maintain heading **288** up to **4500'**. Turn LEFT direct LUVLA for holding.

RMK: 1) (*) VIS RVR ALS 550m para APCH utilizando Diretor de Voo, Piloto Automático ou Head-Up (HUD).

(*) VIS RVR ALS 550m for approach using a Flight Director, Autopilot or Head-Up Display (HUD).



RWY29L	NIL	KT	090	110	130	150	170	190
ALT	NIL	FPM	500	600	700	800	900	1000
(HGT)	NIL	FAF-MAPT	NA					

STRAIGHT-IN	CAT	A	B	C	D	E
CAT I	DA / (OCH)	3651' / (230')				
	ALS/NO ALS/ RVR ALS (m)	800 / 1200 / 700 (*)				
CIRCLING	MDA / (OCH)	NA				
	VIS (m)	NA				

SUP/SUPP N200/A107 12 SEP 19 TIL 10 OCT 19

DEPARTAMENTO DE CONTROLE DO ESPAÇO AÉREO

**SBBR_IAC_02E 1/1
IAC ILS Z RWY 29L**

CHANGES: ADEL DA FREQ. LAYOUT, PROC. VAR.



CODING TABLE

IAC ILS Z RWY 29L					BRASÍLIA / Pres. Juscelino Kubitschek, INTL (SBBR)						SBBR_IAC_02E		SUP/SUPP N200/A107 12 SEP 19 TIL 10 OCT 19		
Seq Num	Transition Identifier	Fly Over	Rec Navaid	Fix Ident	Path and Terminator	Course Angle	Turn	Upper Limit Altitude (FT)	Lower Limit Altitude (FT)	Speed Limit (KT)	Speed Limit Description	TM DST (NM)	VA (°)	Role of the Fix	Navigation Specification
10	APCH	N/A	N/A	EDVIV	IF	N/A	N/A	N/A	+7000.00	N/A	N/A	N/A	N/A	IAF	RNAV 1 or RNP 1
20	APCH	N/A	N/A	TOGIG	TF	217.99° Mag 196.16° True	N/A	N/A	+6500.00	N/A	N/A	7.04	N/A	IF	RNAV 1 or RNP 1
10	APCH	N/A	N/A	MOPDA	IF	N/A	N/A	N/A	+7000.00	N/A	N/A	N/A	N/A	IAF	RNAV 1 or RNP 1
20	APCH	N/A	N/A	BR026	TF	18.03° Mag 356.17° True	N/A	N/A	+6500.00	N/A	N/A	3.54	N/A	OTHER	RNAV 1 or RNP 1
30	APCH	N/A	N/A	TOGIG	TF	317.96° Mag 296.13° True	N/A	N/A	+6500.00	N/A	N/A	4.25	N/A	IF	RNAV 1 or RNP 1
10	FINAL	N/A	N/A	TOGIG	IF	N/A	N/A	N/A	+6500.00	N/A	N/A	N/A	N/A	IF	N/A
20	FINAL	N/A	IJK	SIPAT	CF	287.96° Mag 266.16° True	N/A	N/A	R6220.00	N/A	N/A	5.00	N/A	FAF	N/A
30	FINAL	N/A	IJK	RW29L	CF	287.94° Mag 266.20° True	N/A	N/A	@3474.85	N/A	N/A	8.65	-3.00	LTP	N/A
10	MA	N/A	N/A	N/A	VA	287.94° Mag 266.20° True	N/A	N/A	+4500.00	N/A	N/A	N/A	N/A	N/A	RNAV 1 or RNP 1
20	MA	Y	N/A	LUVLA	DF	N/A	L	N/A	+7000.00	N/A	N/A	N/A	N/A	MAHF	RNAV 1 or RNP 1
30	MA	Y	N/A	LUVLA	HM	70.00° Mag 48.36° True	R	N/A	+7000.00	N/A	N/A	1.00 min	N/A	MAHF	RNAV 1 or RNP 1

Ident	Latitude / Longitude (WGS84) DD:MM:SS.SS
TOGIG	S 15:51:48.66W 47:40:30.82
SIPAT	S 15:52:08.91W 47:45:41.36
RW29L	S 15:52:43.62W 47:54:38.33
EDVIV	S 15:45:01.37W 47:38:28.96
MOPDA	S 15:57:14.02W 47:36:18.72
BR026	S 15:53:41.33W 47:36:33.43
LUVLA	S 15:59:26.73W 48:10:58.58

COD	Meaning
+	AT OR ABOVE
-	AT OR BELOW
@	AT
R	RECOMMENDED
B	BETWEEN
=	AS ASSIGNED
SDF	STEPDOWN FIX
Y	YES
N	NO
L	LEFT
R	RIGHT
N/A	NOT APPLICABLE
LTP	LANDING THRESHOLD POINT
FTP	FICTITIOUS THRESHOLD POINT