

**INSTRUMENT APPROACH
CHART (IAC)**

SALVADOR/ Deputado Luís Eduardo Magalhães, INTL (SBSV)

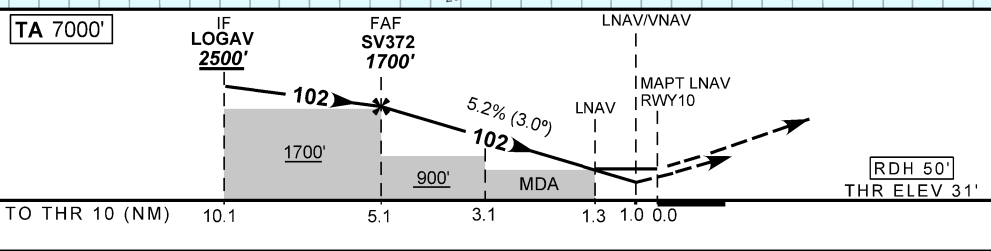
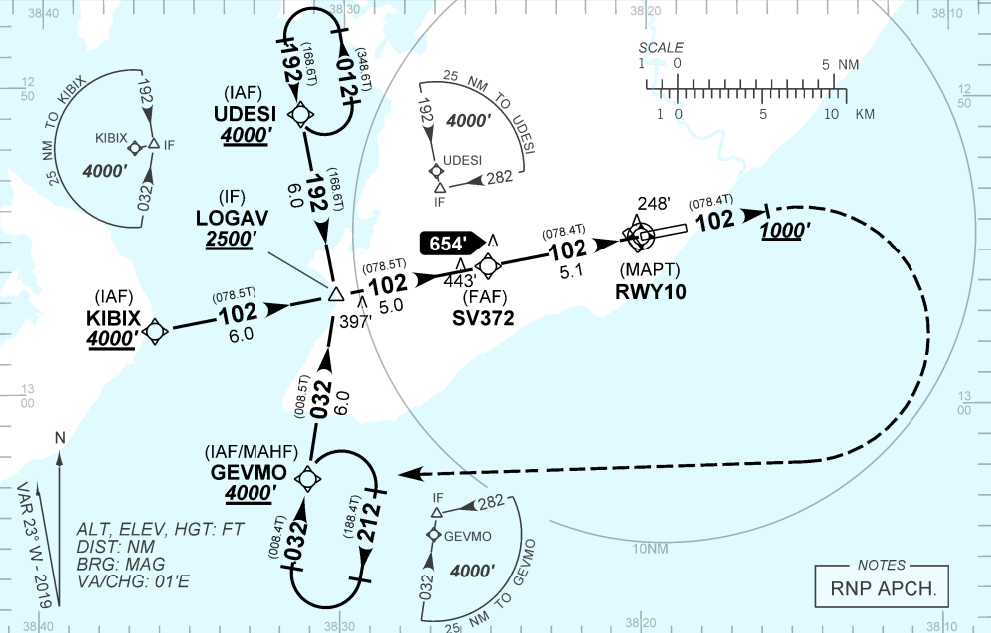
AD ELEV: 63'

RNAV(GNSS) T RWY 10

D-ATIS 127.75	APP SALVADOR 119.35 119.80 120.80 129.45	TWR SALVADOR 118.30 118.60 118.95 121.10 121.50	GNDCL SALVADOR 121.90
N/A	FINAL CRS 102°	FAF: 1700'	LNAV/VNAV DA / (OCH): 409' / (378')
			LNAV MDA / (OCH): 500' / (470')

APCH Perdida: Subir para **4000'**. Manter rumo **102** até cruzar **1000'**. Após, curvar à DIREITA direto GEVMO para espera.
Missed APCH: Climb to **4000'**. Maintain course **102** until passing **1000'**. After, turn RIGHT direct to GEVMO for holding.

RMK: Para sistemas não compensados Baro-VNAV, LNAV/VNAV NÃO AUTORIZADO abaixo de 0°C ou acima de 46°C.
For uncompensated systems Baro-VNAV, LNAV/VNAV NOT AUTHORIZED below 0°C or above 46°C.



SV372	4.0	3.1	2.0	1.3	RWY10	KT	090	110	130	150	170	190
1700	1354	1068	718	500	ALT	FPM	500	600	700	800	900	NA
1669	1323	1037	687	470	(HGT)	FAF-MAPT	NA					

STRAIGHT-IN	CAT	A	B	C	D	E
LNAV/VNAV	DA / (OCH)	409' / (378')				NA
	ALS/NO ALS/ RVR ALS (m)	NIL / 1700 / NIL				
LNAV	MDA / (OCH)	500' / (470')				
	ALS/NO ALS/ RVR ALS (m)	NIL / 1700 / NIL		NIL / 2200 / NIL		
CIRCLING	MDA / (OCH)	NA				
	VIS (m)					

CHANGES: ADEL DA LAYOUT, MDA, THEL



CODING TABLE

IAC RNAV(GNSS) T RWY 10					SALVADOR / Deputado Luís Eduardo Magalhães, INTL (SBSV)							SBSV_IAC_00Z		07 NOV 19 TIL 05 DEC 19	
Seq Num	Transition Identifier	Fly Over	Rec Navaid	Fix Ident	Path and Terminator	Course Angle	Turn	Upper Limit Altitude (FT)	Lower Limit Altitude (FT)	Speed Limit (KT)	Speed Limit Description	TM DST (NM)	VA (°)	Role of the Fix	Navigation Specification
10	APCH	N/A	N/A	GEVMO	IF	N/A	N/A	N/A	+4000	N/A	N/A	N/A	N/A	IAF	RNP APCH
20	APCH	N	N/A	LOGAV	TF	31.92° Mag 8.45° True	N/A	N/A	+2500	N/A	N/A	6.00	N/A	IF	RNP APCH
10	APCH	N/A	N/A	KIBIX	IF	N/A	N/A	N/A	+4000	N/A	N/A	N/A	N/A	IAF	RNP APCH
20	APCH	N	N/A	LOGAV	TF	101.95° Mag 78.47° True	N/A	N/A	+2500	N/A	N/A	6.00	N/A	IF	RNP APCH
10	APCH	N/A	N/A	UDES1	IF	N/A	N/A	N/A	+4000	N/A	N/A	N/A	N/A	IAF	RNP APCH
20	APCH	N	N/A	LOGAV	TF	192.03° Mag 168.55° True	N/A	N/A	+2500	N/A	N/A	6.00	N/A	IF	RNP APCH
10	FINAL	N/A	N/A	LOGAV	IF	N/A	N/A	N/A	+2500	N/A	N/A	N/A	N/A	IF	RNP APCH
20	FINAL	N	N/A	SV372	TF	101.94° Mag 78.47° True	N/A	N/A	R1700	N/A	N/A	5.00	N/A	FAF	RNP APCH
30	FINAL	N	N/A	SVD13	TF	101.90° Mag 78.43° True	N/A	N/A	+1057	N/A	N/A	2.00	-3.00	SDF	RNP APCH
40	FINAL	Y	N/A	RWY10	TF	101.92° Mag 78.45° True	N/A	N/A	@81	N/A	N/A	3.06	-3.00	LTP/FTP	RNP APCH
10	MA	N/A	N/A	N/A	CA	101.91° Mag 78.43° True	N/A	N/A	+1000	N/A	N/A	N/A	N/A	OTHER	RNP APCH
20	MA	Y	N/A	GEVMO	DF	N/A	R	N/A	+4000	N/A	N/A	N/A	N/A	MAHF	RNP APCH
30	MA	Y	N/A	GEVMO	HM	31.92° Mag 8.43° True	R	N/A	+4000	N/A	N/A	1.00 min	N/A	MAHF	RNP APCH

IDENT	Latitude / Longitude (WGS84) DD:MM:SS.SS
LOGAV	S 12:56:41.20W 38:30:11.90
SV372	S 12:55:41.00W 38:25:10.90
SVD13	S 12:55:16.83W 38:23:10.52
RWY10	S 12:54:39.86W 38:20:06.08
GEVMO	S 13:02:38.90W 38:31:06.10
KIBIX	S 12:57:53.40W 38:36:13.20
UDESI	S 12:50:46.79W 38:31:25.03

COD	Meaning
+	AT OR ABOVE
-	AT OR BELOW
@	AT
R	RECOMMENDED
B	BETWEEN
=	AS ASSIGNED
SDF	STEPDOWN FIX
Y	YES
N	NO
L	LEFT
R	RIGHT
N/A	NOT APPLICABLE
LTP	LANDING THRESHOLD POINT
FTP	FICTITIOUS THRESHOLD POINT