

**INSTRUMENT APPROACH
CHART (IAC)**

SALVADOR / Deputado Luís Eduardo Magalhães, INTL (SBSV)

RNAV(GNSS) Z RWY 28

AD ELEV: 63'

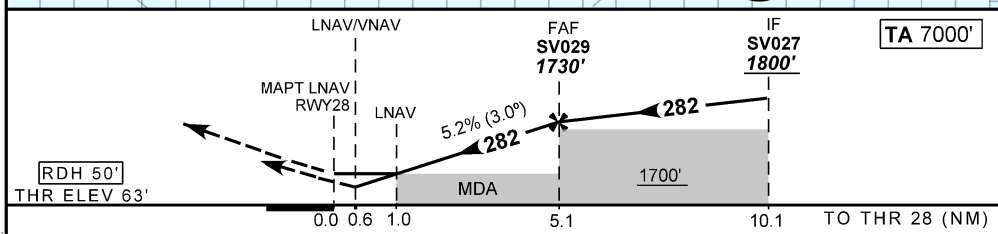
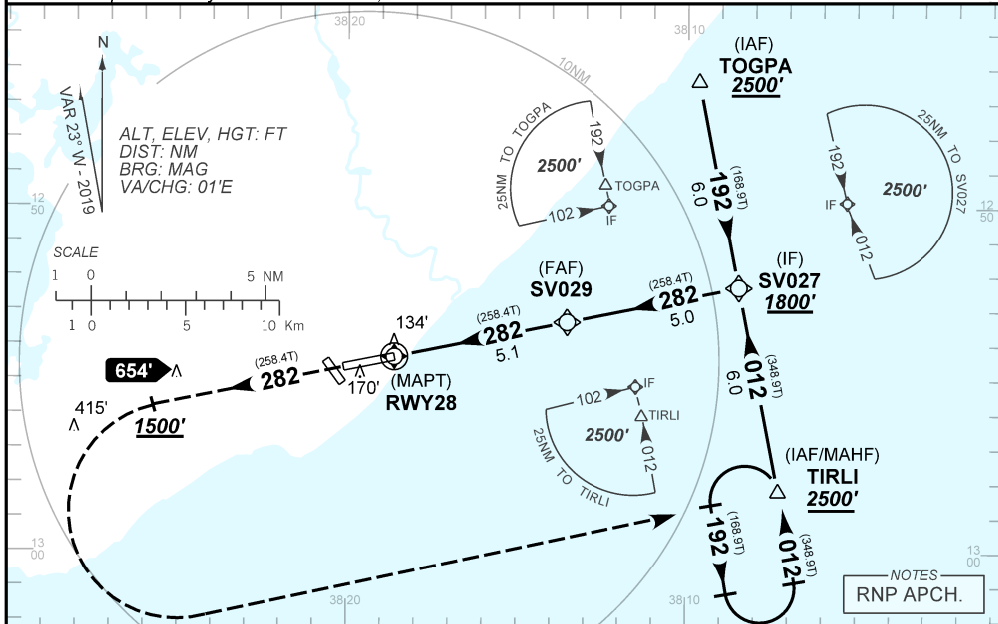
D-ATIS 127.75	APP SALVADOR 119.35 119.80 120.80 129.45	TWR SALVADOR 118.30 118.60 118.95 121.10 121.50	GNDC SALVADOR 121.90
N/A	FINAL CRS 282°	FAF: 1730'	LNNAV/VNAV DA / (OCH): 313' / (250')
			LNNAV MDA / (OCH): 420' / (360')

APCH Perdida: Subir para **2500'**. Manter rumo **282** até cruzar **1500'**. Após, curvar à ESQUERDA direto TIRLI para espera.

Missed APCH: Climb to **2500'**. Maintain course **282** until passing **1500'**. After, turn LEFT direct to TIRLI for holding.

RMK: Para sistemas não compensados Baro-VNAV, LNAV/VNAV NÃO AUTORIZADO abaixo de 0°C ou acima de 46°C.

For uncompensated systems Baro-VNAV, LNAV/VNAV NOT AUTHORIZED below 0°C or above 46°C.



RWY28	1.0	2.0	3.0	4.0	SV029		KT	090	110	130	150	170	190
ALT	420	753	1071	1390	1730		FPM	500	600	700	800	900	NA
(HGT)	360	690	1008	1327	1667		FAF-MAPT			NA			

STRAIGHT-IN	CAT	A	B	C	D	E
LNNAV/VNAV	DA / (OCH)		313' / (250')			NA
	ALS/NO ALS/ RVR ALS (m)		NIL / 1300 / NIL			
LNAV	MDA / (OCH)		420' / (360')			
	ALS/NO ALS/ RVR ALS (m)		NIL / 1600 / NIL			
CIRCLING	MDA / (OCH)		NA			
	VIS (m)					

CHANGES: ADEL DA LAYOUT. MDA THEL



CODING TABLE

IAC RNAV(GNSS) Z RWY 28					SALVADOR / Deputado Luís Eduardo Magalhães, INTL (SBSV)							SBSV_IAC_01A		07 NOV 19 TIL 05 DEC 19	
Seq Num	Transition Identifier	Fly Over	Rec Navaid	Fix Ident	Path and Terminator	Course Angle	Turn	Upper Limit Altitude (FT)	Lower Limit Altitude (FT)	Speed Limit (KT)	Speed Limit Description	TM DST	VA (°)	Role of the Fix	Navigation Specification
10	APCH	N/A	N/A	TOGPA	IF	N/A	N/A	N/A	+2500	N/A	N/A	N/A	N/A	IAF	RNP APCH
20	APCH	N	N/A	SV027	TF	192.38° Mag 168.90° True	N/A	N/A	+1800	N/A	N/A	6.04	N/A	IF	RNP APCH
10	APCH	N/A	N/A	TIRLI	IF	N/A	N/A	N/A	+2500	N/A	N/A	N/A	N/A	IAF	RNP APCH
20	APCH	N	N/A	SV027	TF	12.38° Mag 348.90° True	N/A	N/A	+1800	N/A	N/A	6.00	N/A	IF	RNP APCH
10	FINAL	N/A	N/A	SV027	IF	N/A	N/A	N/A	+1800	N/A	N/A	N/A	N/A	IF	RNP APCH
20	FINAL	N	N/A	SV029	TF	281.90° Mag 258.43° True	N/A	N/A	R1730	N/A	N/A	5.04	N/A	FAF	RNP APCH
30	FINAL	Y	N/A	RWY28	TF	281.92° Mag 258.45° True	N/A	N/A	@113	N/A	N/A	5.07	-3.00	LTP/FTP	RNP APCH
10	MA	N/A	N/A	N/A	CA	281.92° Mag 258.44° True	N/A	N/A	+1500	N/A	N/A	N/A	N/A	N/A	RNP APCH
20	MA	Y	N/A	TIRLI	DF	N/A	L	N/A	+2500	N/A	N/A	N/A	N/A	MAHF	RNP APCH
30	MA	Y	N/A	TIRLI	HM	12.38° Mag 348.88° True	L	N/A	+2500	N/A	N/A	1.00 min	N/A	MAHF	RNP APCH

Ident	Latitude / Longitude (WGS84) DD:MM:SS.SS
SV027	S 12:52:19.67W 38:08:28.13
SV029	S 12:53:20.66W 38:13:31.40
RWY28	S 12:54:21.84W 38:18:36.25
TIRLI	S 12:58:14.56W 38:07:17.13
TOGPA	S 12:46:22.44W 38:09:39.53

COD	Meaning
+	AT OR ABOVE
-	AT OR BELOW
@	AT
R	RECOMMENDED
B	BETWEEN
=	AS ASSIGNED
SDF	STEPDOWN FIX
Y	YES
N	NO
L	LEFT
R	RIGHT
N/A	NOT APPLICABLE
LTP	LANDING THRESHOLD POINT
FTP	FICTITIOUS THRESHOLD POINT