

INSTRUMENT APPROACH CHART (IAC)

PRESIDENTE PRUDENTE / Presidente Prudente (SBDN)

RNAV (GNSS) RWY 30

AD ELEV: 1483'

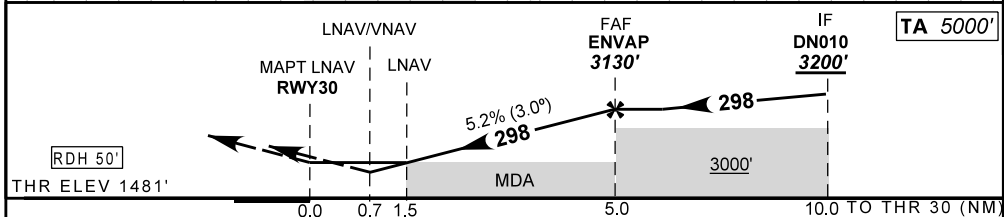
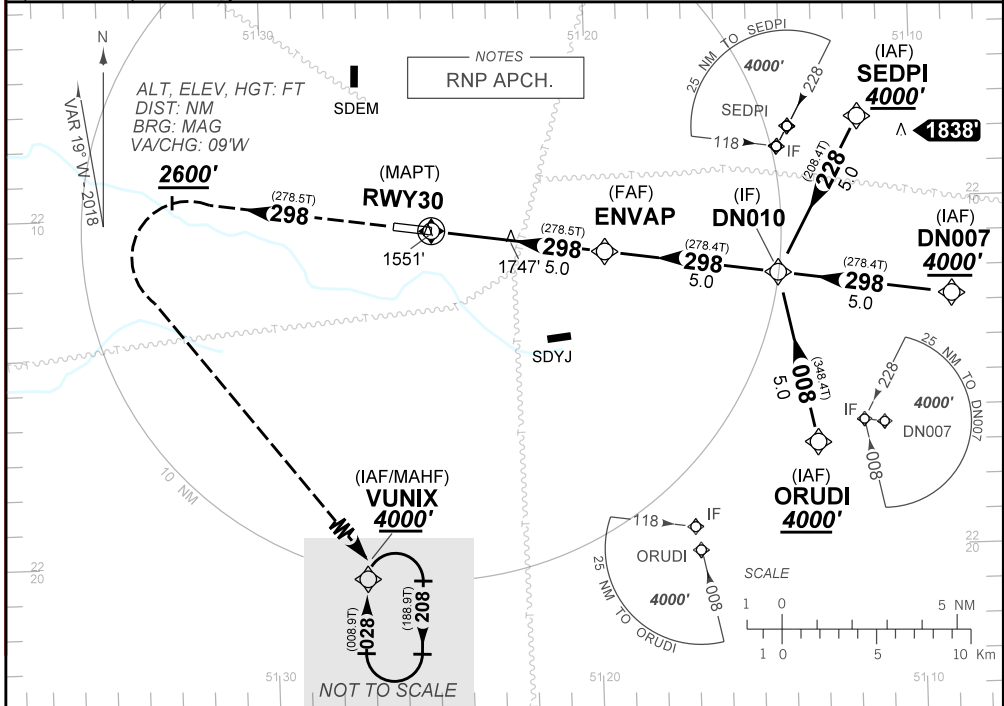
ATIS NIL	APP PRUDENTE 125.45		TWR PRUDENTE 118.45	AFIS PRUDENTE 125.45
N/A	FINAL CRS 298°	FAF 3130'	LNAV/VNAV DA / (OCH): 1731' / (250')	LNAV MDA / (OCH): 2000' (520')

APCH Perdida: Subir para **4000'**. Após **2600'**, curvar à ESQUERDA direto VUNIX para espera.

Missed APCH: Climb to **4000'**. After **2600'**, turn LEFT direct to VUNIX for holding.

RMK: 1) Para sistemas não compensados Baro-VNAV, LNAV/VNAV NAO AUTORIZADO abaixo de 0°C ou acima de 48°C.

1) For uncompensated systems Baro-VNAV, LNAV/VNAV NOT AUTHORIZED below 0°C or above 48°C.



RWY30	1.5	2.0	3.0	4.0	ENVAP	KT	090	110	130	150	170	190
ALT	2000	2167	2486	2804	3130	FPM	500	600	700	800	900	N/A
(HGT)	520	686	1005	1323	1649	FAF-MAPT	NA					

STRAIGHT-IN	CAT	A	B	C	D	E
	DA / (OCH)	1731' / (250')				
LNAV/VNAV	ALS/NO ALS/ RVR ALS (m)	NIL / 1600 / NIL				
	MDA / (OCH)	2000' / (520')				
LNAV	ALS/NO ALS/RVR ALS (m)	NIL / 1600 / NIL				
	MDA / (OCH)	NA				
CIRCLING	VIS (m)	NA				

CHANGES: PROC. LAYOUT: DEC. RMK.

INTENCIONALMENTE EM BRANCO
INTENTIONALLY LEFT BLANK