

STANDARD DEPARTURE CHART
INSTRUMENT (SID)

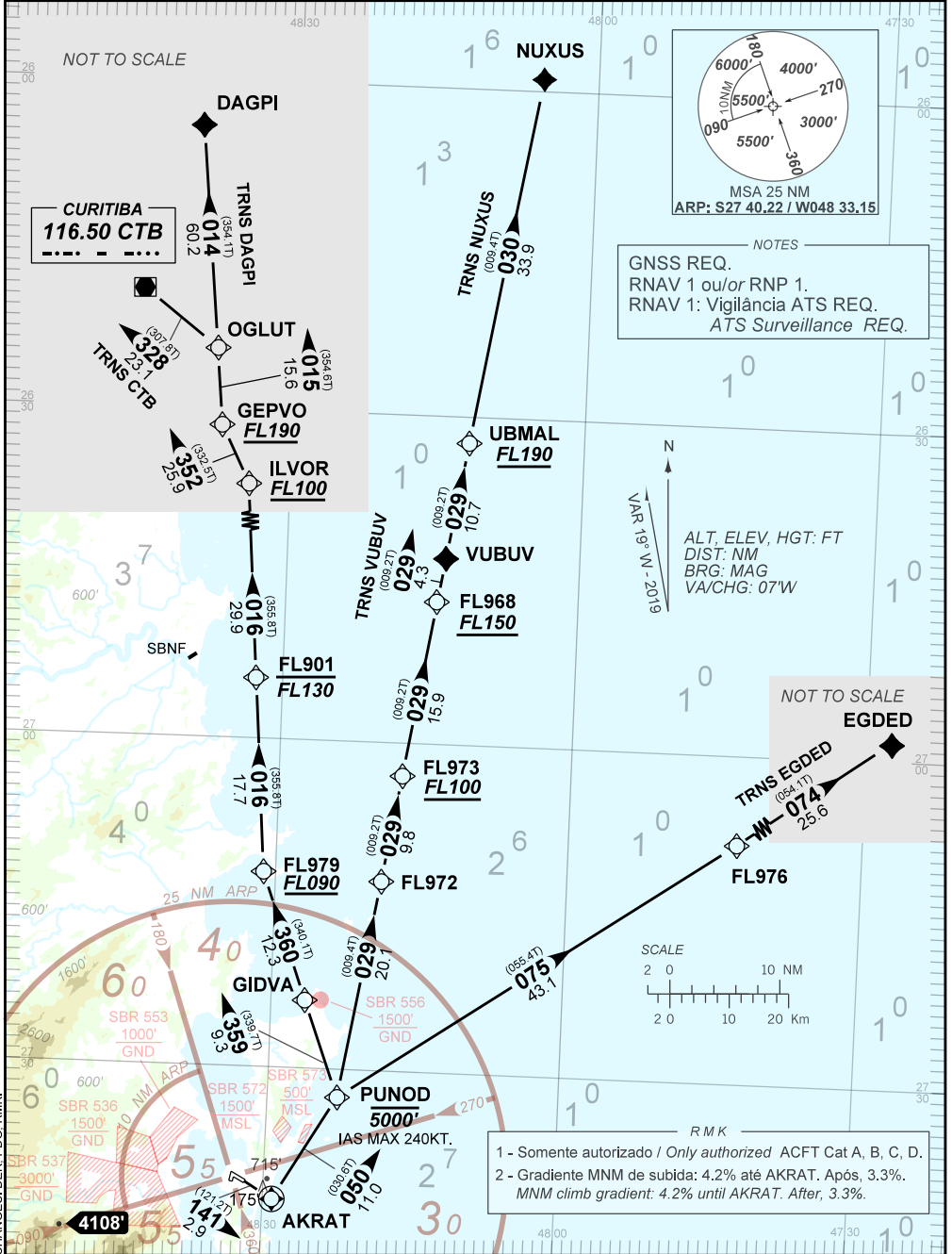
FLORIANÓPOLIS / Hercílio Luz, INTL (SBFL)

RWY 14

RNAV PUNOD 2A

AD ELEV: 17'

| | | | |
|----------|-------------------------------|--|---|
| TA 7000' | TWR FLORIANÓPOLIS | APP FLORIANÓPOLIS | ACC CURITIBA |
| | 118.70 122.80 (MIL) 121.50 | 119.50 119.65 128.95 129.45 129.60 121.50 | 124.40 125.40 126.10 127.05 125.80 127.20 126.95 128.25 127.50 128.40 121.50 |



CHANGES: DER. PDG. RMK.



CODING TABLE

| SID RNAV PUNOD 2A RWY14 | | | | | FLORIANÓPOLIS / Hercílio Luz, INTL (SBFL) | | | | | | | SBFL_SID_01K | | 12 SEP 19 TIL 07 NOV 19 | |
|-------------------------|---------------------------|----------|------------|-----------|---|-----------------------------|------|---------------------------|---------------------------|------------------|-------------------------|--------------|--------|-------------------------|--------------------------|
| Seq Num | IAP Transition Identifier | Fly Over | Rec Navaid | Fix Ident | Path and Terminator | Course Angle | Turn | Upper Limit Altitude (FT) | Lower Limit Altitude (FT) | Speed Limit (KT) | Speed Limit Description | TM DST | VA (°) | Role Of TheFix | Navigation Specification |
| 10 | RUNWAY | Y | N/A | AKRAT | CF | 140.74° Mag 121.21° True | N/A | N/A | N/A | 240 | - | 2.95 | 2.4 | TP | RNAV 1 or RNP 1 |
| 20 | RUNWAY | N | N/A | PUNOD | TF | 50.32° Mag 30.61° True | L | -5000 | N/A | 240 | - | 11.01 | N/A | OTHER | RNAV 1 or RNP 1 |
| 10 | EGDED | N/A | N/A | PUNOD | IF | N/A | N/A | -5000 | N/A | 240 | - | N/A | N/A | OTHER | RNAV 1 or RNP 1 |
| 20 | EGDED | N | N/A | FL976 | TF | 75.55° Mag 55.36° True | N/A | N/A | N/A | N/A | N/A | 43.05 | N/A | OTHER | RNAV 1 or RNP 1 |
| 30 | EGDED | N | N/A | EGDED | TF | 74.55° Mag 54.09° True | N/A | N/A | N/A | N/A | N/A | 25.58 | N/A | OTHER | RNAV 1 or RNP 1 |
| 10 | NUXUS | N/A | N/A | PUNOD | IF | N/A | N/A | -5000 | N/A | 240 | - | N/A | N/A | OTHER | RNAV 1 or RNP 1 |
| 20 | NUXUS | N | N/A | FL972 | TF | 29.27° Mag 9.42° True | N/A | N/A | N/A | N/A | N/A | 20.08 | N/A | OTHER | RNAV 1 or RNP 1 |
| 30 | NUXUS | N | N/A | FL973 | TF | 29.10° Mag 9.18° True | N/A | N/A | +10000 | N/A | N/A | 9.81 | N/A | OTHER | RNAV 1 or RNP 1 |
| 40 | NUXUS | N | N/A | FL968 | TF | 29.18° Mag 9.16° True | N/A | N/A | +15000 | N/A | N/A | 15.91 | N/A | OTHER | RNAV 1 or RNP 1 |
| 50 | NUXUS | N | N/A | VUBUV | TF | 29.21° Mag 9.17° True | N/A | N/A | N/A | N/A | N/A | 4.30 | N/A | OTHER | RNAV 1 or RNP 1 |
| 60 | NUXUS | N | N/A | UBMAL | TF | 29.35° Mag 9.23° True | N/A | N/A | +19000 | N/A | N/A | 10.73 | N/A | OTHER | RNAV 1 or RNP 1 |
| 70 | NUXUS | N | N/A | NUXUS | TF | 29.70° Mag 9.38° True | N/A | N/A | N/A | N/A | N/A | 33.85 | N/A | OTHER | RNAV 1 or RNP 1 |
| 10 | VUBUV | N/A | N/A | PUNOD | IF | N/A | N/A | -5000 | N/A | 240 | - | N/A | N/A | OTHER | RNAV 1 or RNP 1 |
| 20 | VUBUV | N | N/A | FL972 | TF | 29.27° Mag 9.42° True | N/A | N/A | N/A | N/A | N/A | 20.08 | N/A | OTHER | RNAV 1 or RNP 1 |
| 30 | VUBUV | N | N/A | FL973 | TF | 29.10° Mag 9.18° True | N/A | N/A | +10000 | N/A | N/A | 9.81 | N/A | OTHER | RNAV 1 or RNP 1 |
| 40 | VUBUV | N | N/A | FL968 | TF | 29.18° Mag 9.16° True | N/A | N/A | +15000 | N/A | N/A | 15.91 | N/A | OTHER | RNAV 1 or RNP 1 |
| 50 | VUBUV | N | N/A | VUBUV | TF | 29.21° Mag 9.17° True | N/A | N/A | N/A | N/A | N/A | 4.30 | N/A | OTHER | RNAV 1 or RNP 1 |

| | | | | | | | | | | | | | | | |
|----|-------|-----|-----|-------|----|-----------------------------|-----|--------|--------|-----|-----|-------|-----|-------|-----------------|
| 10 | DAGPI | N/A | N/A | PUNOD | IF | N/A | N/A | -5000 | N/A | 240 | - | N/A | N/A | OTHER | RNAV 1 or RNP 1 |
| 20 | DAGPI | N | N/A | GIDVA | TF | 359.39° Mag 339.66° True | N/A | N/A | N/A | N/A | N/A | 9.34 | N/A | OTHER | RNAV 1 or RNP 1 |
| 30 | DAGPI | N | N/A | FL979 | TF | 359.86° Mag 340.11° True | N/A | N/A | +9000 | N/A | N/A | 12.34 | N/A | OTHER | RNAV 1 or RNP 1 |
| 40 | DAGPI | N | N/A | FL901 | TF | 15.59° Mag 355.76° True | R | -13000 | N/A | N/A | N/A | 17.68 | N/A | OTHER | RNAV 1 or RNP 1 |
| 50 | DAGPI | N | N/A | ILVOR | TF | 15.73° Mag 355.78° True | N/A | N/A | +10000 | N/A | N/A | 29.85 | N/A | OTHER | RNAV 1 or RNP 1 |
| 60 | DAGPI | N | N/A | GEPVO | TF | 352.46° Mag 332.52° True | L | N/A | +19000 | N/A | N/A | 25.87 | N/A | OTHER | RNAV 1 or RNP 1 |
| 70 | DAGPI | N | N/A | OGLUT | TF | 14.61° Mag 354.61° True | R | N/A | N/A | N/A | N/A | 15.61 | N/A | OTHER | RNAV 1 or RNP 1 |
| 80 | DAGPI | N | N/A | DAGPI | TF | 14.31° Mag 354.11° True | N/A | N/A | N/A | N/A | N/A | 60.24 | N/A | OTHER | RNAV 1 or RNP 1 |
| 10 | CTB | N/A | N/A | PUNOD | IF | N/A | N/A | -5000 | N/A | 240 | - | N/A | N/A | OTHER | RNAV 1 or RNP 1 |
| 20 | CTB | N | N/A | GIDVA | TF | 359.39° Mag 339.66° True | N/A | N/A | N/A | N/A | N/A | 9.34 | N/A | OTHER | RNAV 1 or RNP 1 |
| 30 | CTB | N | N/A | FL979 | TF | 359.86° Mag 340.11° True | N/A | N/A | +9000 | N/A | N/A | 12.34 | N/A | OTHER | RNAV 1 or RNP 1 |
| 40 | CTB | N | N/A | FL901 | TF | 15.59° Mag 355.76° True | R | -13000 | N/A | N/A | N/A | 17.68 | N/A | OTHER | RNAV 1 or RNP 1 |
| 50 | CTB | N | N/A | ILVOR | TF | 15.73° Mag 355.78° True | N/A | N/A | +10000 | N/A | N/A | 29.85 | N/A | OTHER | RNAV 1 or RNP 1 |
| 60 | CTB | N | N/A | GEPVO | TF | 352.46° Mag 332.52° True | L | N/A | +19000 | N/A | N/A | 25.87 | N/A | OTHER | RNAV 1 or RNP 1 |
| 70 | CTB | N | N/A | OGLUT | TF | 14.61° Mag 354.61° True | R | N/A | N/A | N/A | N/A | 15.61 | N/A | OTHER | RNAV 1 or RNP 1 |
| 80 | CTB | N | N/A | CTB | TF | 327.65° Mag 307.84° True | L | N/A | N/A | N/A | N/A | 23.06 | N/A | OTHER | RNAV 1 or RNP 1 |

| Ident | Latitude / Longitude (WGS84) DD:MM:SS.SS |
|-------|---|
| AKRAT | S 27:42:09.01W 48:28:58.84 |
| CTB | S 25:31:55.31W 49:10:03.59 |
| DAGPI | S 24:45:58.99W 48:56:44.39 |
| EGDED | S 26:53:11.63W 47:19:35.52 |
| FL901 | S 26:54:32.99W 48:32:30.17 |
| FL968 | S 26:47:19.12W 48:14:22.63 |
| FL972 | S 27:12:47.05W 48:18:58.09 |
| FL973 | S 27:03:04.33W 48:17:12.78 |
| FL976 | S 27:08:12.32W 47:42:48.91 |
| FL979 | S 27:12:14.16W 48:31:02.19 |
| GEPVO | S 26:01:40.80W 48:48:15.60 |
| GIDVA | S 27:23:52.40W 48:26:19.07 |
| ILVOR | S 26:24:41.56W 48:34:57.65 |
| NUXUS | S 25:58:56.86W 48:05:32.32 |
| OGLUT | S 25:46:05.29W 48:49:53.28 |
| PUNOD | S 27:32:39.12W 48:22:40.00 |
| UBMAL | S 26:32:26.69W 48:11:41.46 |
| VUBUV | S 26:43:03.85W 48:13:36.74 |

| DER | Latitude / Longitude (WGS84) DD:MM:SS.SS | Elevation (FT) |
|-----|--|----------------|
| 14 | S 27:40:36.98 W 48:31:49.44 | 14.44 ft MSL |

| COD | Meaning |
|-----|----------------|
| + | AT OR ABOVE |
| - | AT OR BELOW |
| @ | AT |
| R | RECOMMENDED |
| B | BETWEEN |
| = | AS ASSIGNED |
| SDF | STEPDOWN FIX |
| Y | YES |
| N | NO |
| L | LEFT |
| R | RIGHT |
| N/A | NOT APPLICABLE |