

**INSTRUMENT APPROACH  
CHART (IAC)**

**SALVADOR / Deputado Luís Eduardo Magalhães, INTL (SBSV)  
RNAV(GNSS) Y RWY 09**

**AD ELEV: 66'**

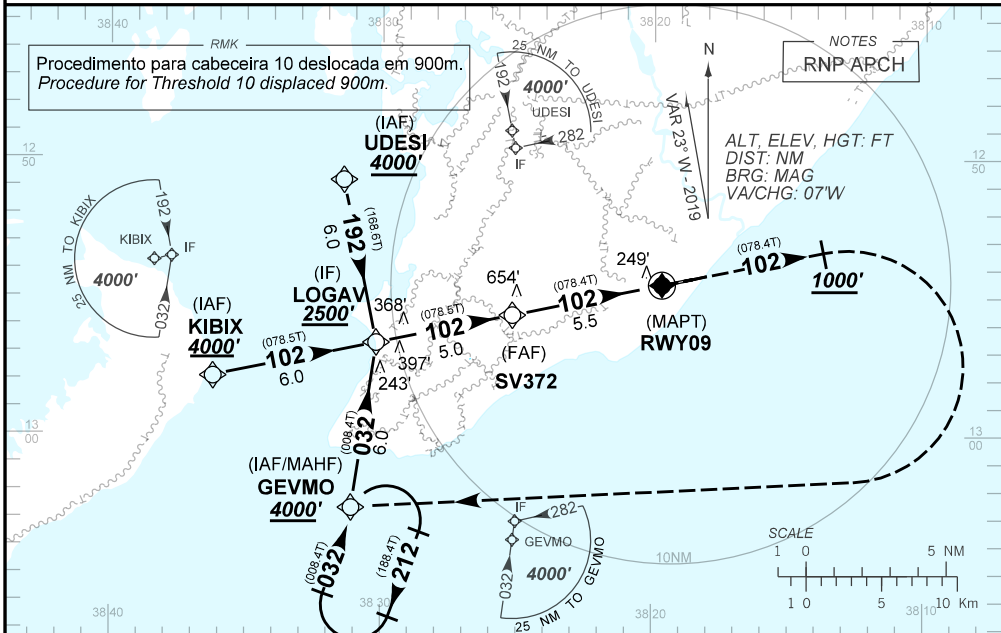
**THR 10 DISPLACED 900m**

ATIS <b>127.75</b>	APP SALVADOR <b>119.35 119.80 120.80 129.45</b>	TWR SALVADOR <b>118.30 118.60 118.95 121.10 121.50</b>	GNDC SALVADOR <b>121.90</b>
-----------------------	--	---	--------------------------------

N/A	FINAL CRS <b>102°</b>	LNAV/VNAV DA / (OCH): <b>429' / (400')</b>	LNAV MDA / (OCH): <b>520' / (490')</b>
-----	--------------------------	---	---

APCH Perdida: 1) Subir para **4000'**. Manter rumo **102°** até cruzar **1000'**. Então, curvar à DIREITA direto GEVMO para espera  
Missed APCH: 1) Climb to **4000'**. Maintain course **102°** until passing **1000'**. Then, turn RIGHT direct GEVMO for holding.

RMK: 1) Para sistemas não compensados Baro-VNAV, LNAV/VNAV NÃO AUTORIZADO abaixo de 0°C ou acima de 46°C.  
1) For uncompensated systems Baro-VNAV, LNAV/VNAV NOT AUTHORIZED below 0°C or above 46°C.



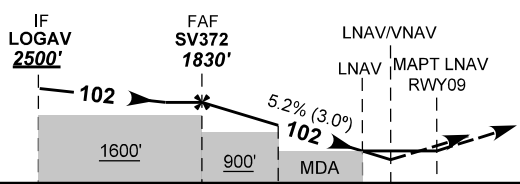
Procedimento para cabeceira 10 deslocada em 900m.  
Procedure for Threshold 10 displaced 900m.

NOTES  
RNP-ARCH

ALT, ELEV, HGT: FT  
DIST: NM  
BRG: MAG  
VA/CHG: 07'W



**TA 7000'**



**RDH 50'**

THR ELEV 31'

TO THR 09 (NM) 10.5 5.5 2.6 1.4 1.1 0.0

SV372	5.0	4.0	3.0	2.6	1.4	RWY09	KT	090	110	130	150	170	190
1830	1673	1355	1036	909	520	ALT	FPM	500	600	700	800	900	NA
1799	1642	1324	1005	878	490	(HGT)	FAF-MAPT	NA					

STRAIGHT-IN	CAT	A	B	C	D	E
LNAV/VNAV	DA / (OCH)	429' / (400')				
	ALS/NO ALS/ RVR ALS (m)	NIL / 1600 / NIL		NIL / 1800 / NIL		
LNAV	MDA / (OCH)	520' / (490')				
	ALS/NO ALS/RVR ALS (m)	NIL / 1600 / NIL		NIL / 2300 / NIL		
CIRCLING	MDA / (OCH)	NA				
	VIS (m)	NA				

CHANGES: CARTA NOVA

SUP/SUPP N027/A016 31 JAN 19 TIL 23 MAY 19

DEPARTAMENTO DE CONTROLE DO ESPAÇO AÉREO

SBSV\_IAC\_03E 1/1

IAC RNAV(GNSS) Y RWY 09

**INTENCIONALMENTE EM BRANCO**  
INTENTIONALLY LEFT BLANK