

INSTRUMENT APPROACH  
CHART (IAC)

SÃO PAULO / Congonhas (SBSB)

AD ELEV: 2631'

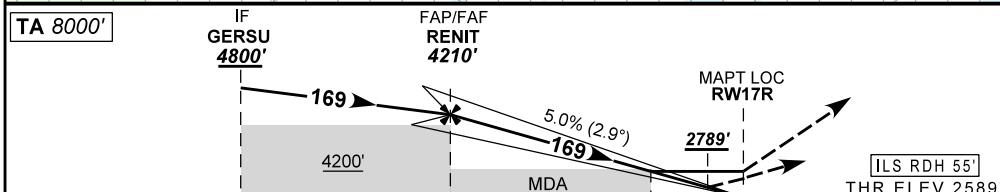
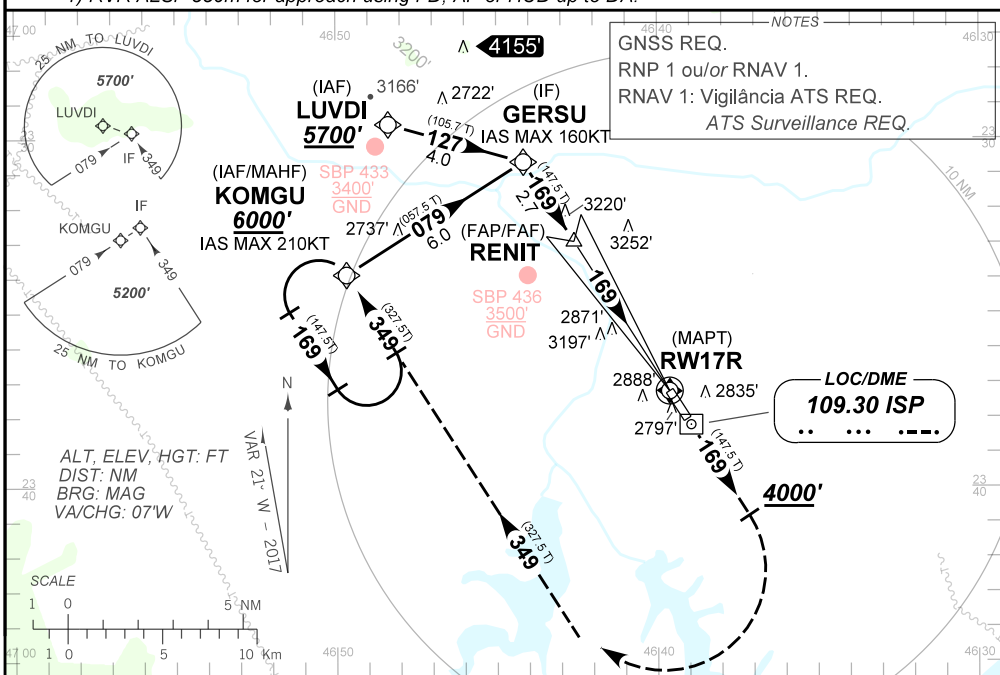
ILS Z ou/ou LOC Z RWY 17R

D-ATIS 127.65	APP SÃO PAULO 129.75 119.15 120.45 120.85 133.85 121.50	TWR SÃO PAULO 118.05 127.15 121.50	GNDC SÃO PAULO 121.90
------------------	---	---------------------------------------	--------------------------

LOC/DME ISP 109.30 MHz	FINAL CRS 169°	FAF 4210'	CAT 1 DA / (OCH): 2789' (200')	LOC ONLY MDA / (OCH): 3160' (580')
---------------------------	-------------------	--------------	-----------------------------------	---------------------------------------

APCH Perdida: Subir para **5500'** gradiente MNM 5%. Manter proa **169** até cruzar **4000'**. Curvar à DIREITA rumo **349** para espera em KOMGU.  
Missed APCH: Climb to **5500'** MNM gradient 5%. Maintain course **169** until passing **4000'**. Turn RIGHT course **349** to KOMGU for holding.

RMK: 1) RVR ALSF 550m para aproximação utilizando FD, PA ou HUD até a DA.  
1) RVR ALSF 550m for approach using FD, AP or HUD up to DA.



TO THR 17R (NM)	7.8	5.1	1.7	0.5	0.0		
TO ISP (DME)	9.0	6.3	2.9	1.7	1.2		
	RENIT	4.0	3.0	2.0	1.7	RWY17R	
	4210	3913	3594	3276	3160	ALT	
	1664	1324	1005	687	571	(HGT)	
	KT	090	110	130	150	170	190
	FPM	500	600	700	800	NA	
	FAF-MAPT			NA			

STRAIGHT-IN	CAT	A	B	C	D	E
CAT 1	DA / (OCH) / TETO	2789' / (200') / 200'			NA	NA
	ALSF/NO ALSF/RVR ALSF (m)	800 / 1200 / 700(*)				
LOC	MDA / (OCH) / TETO	3160' / (580') / 600'			NA	NA
	ALSF/NO ALSF/RVR ALSF (m)	800 / 1600 / NIL		1900 / 2600 / NIL		
CIRCLING	MDA / (OCH) / TETO	NA				NA
	VIS (m)	NA				

CHANGES: PROC. IDENT.

SUP N142 09 NOV 17 TIL 07 DEC 17

DEPARTAMENTO DE CONTROLE DO ESPAÇO AÉREO

SBSB\_IAC\_00P 1

IAC ILS Z ou/ou LOC Z RWY 17R

**INTENCIONALMENTE EM BRANCO**  
INTENTIONALLY LEFT BLANK