

**INSTRUMENT APPROACH
CHART (IAC)**

GUARAPUAVA / Tancredo Thomas de Faria (SSGG)

AD ELEV: 3494'

RNAV(GNSS) RWY 26

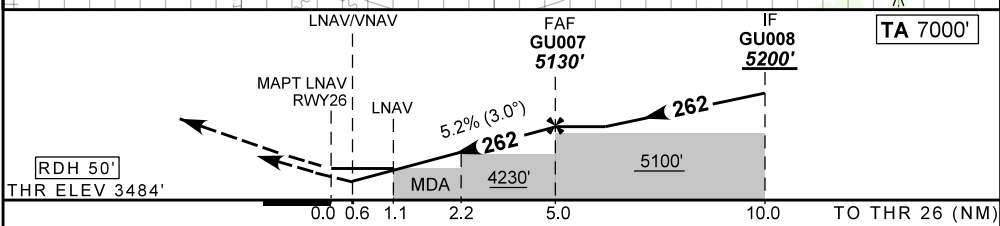
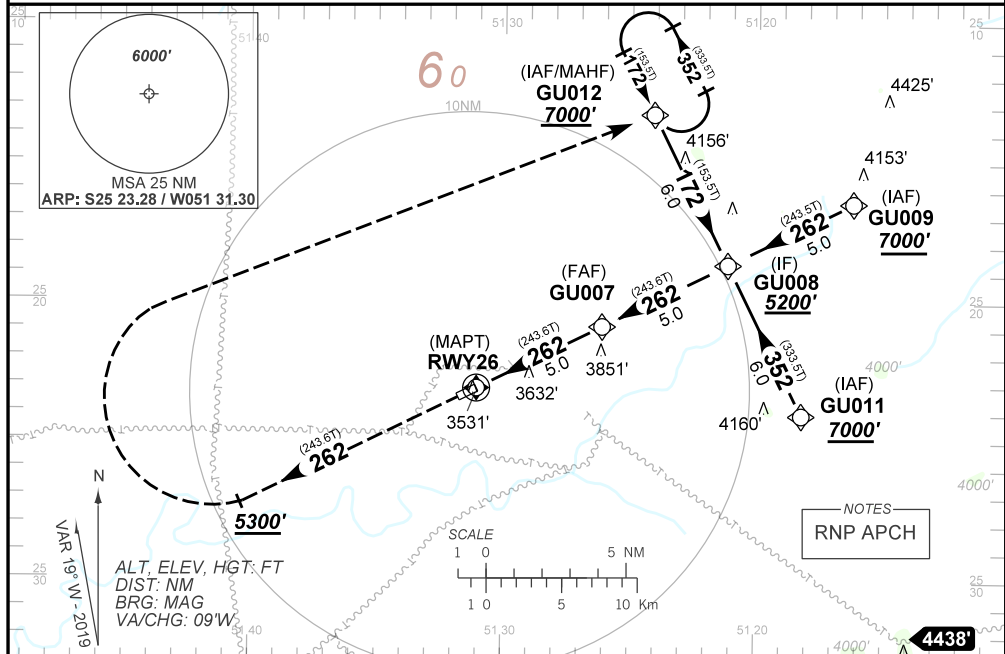
ATIS NIL	APP NIL		AFIS GUARAPUAVA 131.70	GNDC NIL
N/A	FINAL CRS 262°	FAF: 5130'	LNAV/VNAV DA / (OCH): 3734' / (250')	LNAV MDA / (OCH): 3870' / (390')

APCH Perdida: Subir para **7000'** no rumo **262**, após **5300'**, curvar à DIREITA direto GU012 para espera.

Missed APCH: Climb to **7000'** on course **262**, until **5300'**, turn RIGTH direct GU012 for holding.

RMK: 1) Para sistema BARO-VNAV não compensados, procedimento LNAV/VNAV não autorizado abaixo de -10°C.

1) For uncompensated systems BARO-VNAV, LNAV/VNAV procedure not authorized below -10°C.



RWY26	1.1	2.0	3.0	4.0	GU007	KT	090	110	130	150	170	190
ALT	3870	4235	4489	4808	5100	FPM	500	600	700	800	NA	NA
(HGT)	386	751	1005	1324	1646	FAF-MAPT	NA					

STRAIGHT-IN	CAT	A	B	C	D	E
	DA / (OCH)	3734' / (250')				
LNAV/VNAV	ALS/NO ALS/ RVR ALS (m)	NIL / 1300 / NIL			NA	
	MDA / (OCH)	3870' / (390')				
LNAV	ALS/NO ALS/ RVR ALS (m)	NIL / 1800 / NIL				
	MDA / (OCH)	NA				
CIRCLING	MDA / (OCH)	NA				
	VIS (m)	NA				

CHANGES: NEW CHART.



CODING TABLE

IAC RNAV (GNSS) RWY 26					GUARAPUAVA / Tancredo Thomas de Faria (SBGU)							SBGU_IAC_00E		SUP N036/20 30 JAN 20 TIL 26 MAR 20	
Seq Num	Transition Identifier	Fly Over	Rec Navaid	Fix Ident	Path and Terminator	Course Angle	Turn	Upper Limit Altitude (FT)	Lower Limit Altitude (FT)	Speed Limit (KT)	Speed Limit Description	TM DST	VA (°)	Role of the Fix	Navigation Specification
10	APCH	N/A	N/A	GU012	IF	N/A	N/A	N/A	+7000.00	N/A	N/A	N/A	N/A	IAF	RNP APCH
20	APCH	N	N/A	GU008	TF	172.27° Mag 153.54° True	N/A	N/A	+5200.00	N/A	N/A	6.00	N/A	IF	RNP APCH
10	APCH	N/A	N/A	GU009	IF	N/A	N/A	N/A	+7000.00	N/A	N/A	N/A	N/A	IAF	RNP APCH
20	APCH	N	N/A	GU008	TF	262.28° Mag 243.55° True	N/A	N/A	+5200.00	N/A	N/A	5.00	N/A	IF	RNP APCH
10	APCH	N/A	N/A	GU011	IF	N/A	N/A	N/A	+7000.00	N/A	N/A	N/A	N/A	IAF	RNP APCH
20	APCH	N	N/A	GU008	TF	352.27° Mag 333.54° True	N/A	N/A	+5200.00	N/A	N/A	6.00	N/A	IF	RNP APCH
10	FINAL	N/A	N/A	GU008	IF	N/A	N/A	N/A	+5200.00	N/A	N/A	N/A	N/A	IF	RNP APCH
20	FINAL	N	N/A	GU007	TF	262.26° Mag 243.58° True	N/A	N/A	R5130.00	N/A	N/A	5.00	N/A	FAF	RNP APCH
30	FINAL	N	N/A	GU013*	TF	262.24° Mag 243.60° True	N/A	N/A	+4230.00	N/A	N/A	2.80	-3.00	SDF	RNP APCH
40	FINAL	Y	N/A	RWY26	TF	262.23° Mag 243.62° True	N/A	N/A	@3534.25	N/A	N/A	2.20	-3.00	LPT/FTP	RNP APCH
10	MA	N/A	N/A	N/A	CA	262.22° Mag 243.62° True	N/A	N/A	+5300.00	N/A	N/A	N/A	N/A	N/A	RNP APCH
20	MA	Y	N/A	GU012	DF	N/A	R	N/A	+7000.00	N/A	N/A	N/A	N/A	MAHF	RNP APCH
30	MA	Y	N/A	GU012	HM	172.28° Mag 153.55° True	L	N/A	+7000.00	N/A	N/A	N/A	N/A	MAHF	RNP APCH

* Fictitious point = for coding purpose only.

Ident	Latitude / Longitude (WGS84) DD:MM:SS.SS
GU008	S 25:18:40.51W 51:21:09.36
GU007	S 25:20:54.47W 51:26:05.86
GU013	S 25:22:09.42W 51:28:51.97
GU012	S 25:13:17.20W 51:24:06.27
GU009	S 25:16:26.38W 51:16:13.05
GU011	S 25:24:03.75W 51:18:12.19
RWY26	S 25:23:08.27W 51:31:02.53

COD	Meaning
+	AT OR ABOVE
-	AT OR BELOW
@	AT
R	RECOMMENDED
B	BETWEEN
=	AS ASSIGNED
SDF	STEPDOWN FIX
Y	YES
N	NO
L	LEFT
R	RIGHT
N/A	NOT APPLICABLE
LTP	LANDING THRESHOLD POINT
FTP	FICTITIOUS THRESHOLD POINT