

**INSTRUMENT APPROACH CHART (IAC)**

**SALVADOR / Deputado Luís Eduardo Magalhães, INTL (SBSV)**

**RNAV(GNSS) 167**

**AD ELEV: 66'**

D-ATIS <b>127.75</b>	APP SALVADOR <b>119.35 119.80 120.80 129.45</b>	TWR SALVADOR <b>118.30 118.60 118.95 121.10 121.50</b>	GNDC SALVADOR <b>121.90</b>
-------------------------	----------------------------------------------------	---------------------------------------------------------------	--------------------------------

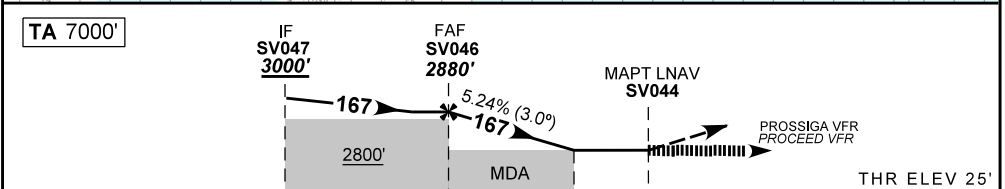
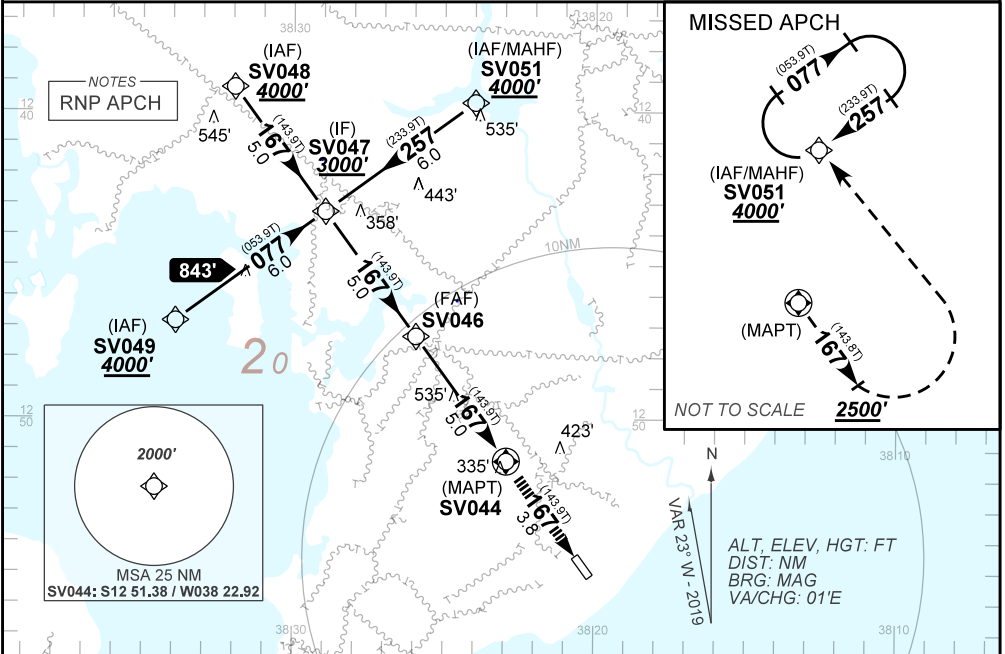
N/A	FINAL CRS <b>167°</b>	FAF <b>2880'</b>	N/A	LNAV MDA / (OCH): <b>1500' / (1440')</b>
-----	--------------------------	---------------------	-----	---------------------------------------------

APCH Perdida: Subir para **4000'**. Manter rumo **167°** até cruzar **2500'**. Então, curvar à ESQUERDA direto SV051 para espera.

Missed APCH: Climb to **4000'**. Maintain course **167°** until passing **2500'**. Then, turn LEFT direct to SV051 for holding.

RMK: 1) Procedimento aplicável somente para operação VFR em SBSV. 2) Requerido FPL "Y" com mudança de regra de voo no MAPT. 3) Prosseguir VFR a partir do MAPT ou efetuar aproximação perdida.

1) Procedure applicable only for VFR operation in SBSV. 2) FPL "Y" required with flight rules change to VFR at MAPT. 3) Proceed VFR from MAPT or make MISSED APPROACH PROCEDURE.



TO THR 17 (NM)	13.8	8.8	4.5	3.8	0.0
TO MAPT (NM)	10.0	5.0	0.7	0.0	0.0

	SV046	4.0	3.0	2.0	0.7	MAPT	KT	090	110	130	150	170	190	
	2880	2558	2240	1922	1500	ALT	FPM	500	600	700	800	900	NA	
	NIL						(HGT)	FAF-MAPT	NA					

STRAIGHT-IN	CAT	A	B	C	D	E
LNAV	MDA / (OCH)	1500' / (1440')				NA
	ALS/NO ALS/RVR ALS (m)	5000				

CHANGES: NEW CHART

**INTENCIONALMENTE EM BRANCO**  
INTENTIONALLY LEFT BLANK