

INSTRUMENT APPROACH
CHART (IAC)

FLORIANÓPOLIS / Hercílio Luz, INTL (SBFL)

RNAV(GNSS) Z RWY 32

AD ELEV: 17'

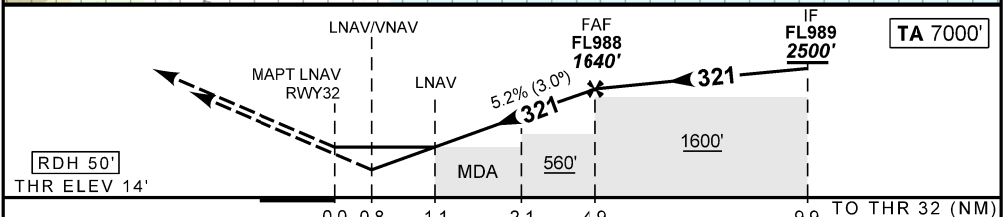
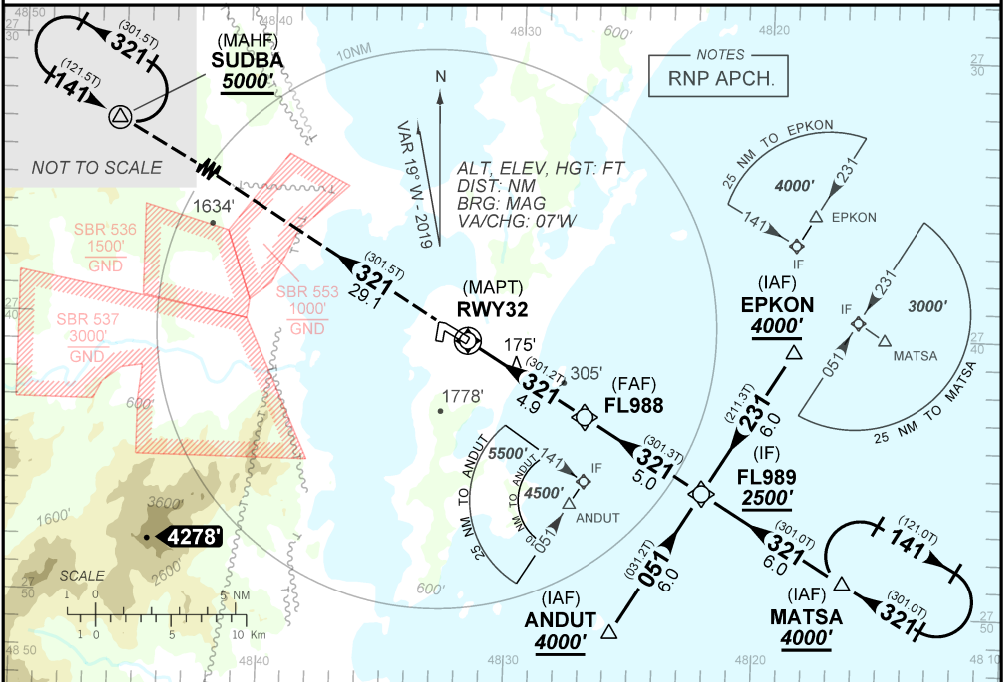
D-ATIS 127.45	APP FLORIANÓPOLIS 119.50 119.65 128.95 129.45 129.60 121.50	TWR FLORIANÓPOLIS 118.70 122.80 (MIL) 121.50	GNDC FLORIANÓPOLIS 121.70
N/A	FINAL CRS 321°	FAF 1640'	LNAV/VNAV DA / (OCH): 330' / (320')
		LNAV MDA / (OCH): 430' / (420')	

APCH Perdida: Subir para **5000'** rumo **321°** para espera em SUDBA.

Missed APCH: Climb to **5000'** on course **321°** to SUDBA for holding.

RMK: 1) Para sistemas BARO-VNAV não compensados, procedimento LNAV/VNAV não autorizado abaixo de -10°C.

1) For uncompensated systems BARO-VNAV, LNAV/VNAV procedure not authorized below -10°C.



RWY 32	1.1	2.1	3.0	4.0	FL988														
ALT	430	733	1019	1338	1640														
(HGT)	416	719	1005	1324	1626														

STRAIGHT-IN	CAT	A	B	C	D	E
	DA / (OCH)	330' / (320')				NA
LNAV/VNAV	ALS / NO ALS / RVR ALS (m)	NIL / 1400 / NIL				
LNAV	MDA / (OCH)	430' / (420')				
CIRCLING	ALS / NO ALS / RVR ALS (m)	NIL / 1600 / NIL		NIL / 1900 / NIL		NA
	MDA / (OCH)	NA				
	VIS (m)					

CHANGES DEC. MINM. THR.